

## Alaska Native/American Indian: Performance of Academic Indicators, 2008-2009

### Introduction

This report is based upon the new race/ethnicity identification process that was implemented in 2007-08. Under the new guidelines, the student selects all that apply from the seven race/ethnicity categories of Alaska Native, American Indian, Asian, Black, Native Hawaiian or Other Pacific Islander, Hispanic or Latino, and White. If the student selects more than one, they are categorized in the distinct group of "two or more races" with the exception of Hispanic which is considered an ethnicity.

Overall changes from the re-identification process were an increase in "two or more races" and Hispanic or Latino, and a decrease in all of the remaining race/ethnicity designated student groups. **However, for the purposes of this report, any student who selected Alaska Native and/or American Indian is included in the statistics for this group of students, even if they are demographically considered "two or more races."** As requested by Title VII, this is a change from the 2007-08 edition of this report in which such students could be a part of the "two or more races" or the Hispanic categories. The change in classifying Alaska Native and American Indian Students resulted in 2,456 individuals being identified as Alaska Native/American Indian that would have been identified as "two or more races" under the 2007-08 guidelines.

The data below describes the 2008-09 status of the Alaska Native/American Indian student population within the Anchorage School District. The categories that are discussed include participation in testing, Standard Based Assessment (SBA) results, TerraNova results, and the High School Graduation Qualifying Examination (HSGQE) results as compared with the White and All Students groups. Dropout and graduation rates (which have been adjusted from the 2007-08 report to reflect the identification methods described above) are also included with charts and graphs of all designated student groups. Other reported data elements include the number of Alaska Native/American Indian students designated as gifted and the achievement gap. All attachments are briefly explained below.

### Attachment 1: Participation in Reading, Writing and/or Mathematics SBA (p.4-5)

The participation rate for Alaskan Native/ American Indian students in the ASD during the 2008-09 year was 98.24 percent. The participation rate is calculated by taking the number of Alaska Native/American Indian students enrolled on the first day of testing and dividing it by the number of Alaska Native/American Indian students who had a valid test score in reading, writing or mathematics. There was a decrease of 0.05 percentage points from the 2007-08 participation rate of 98.29 percent. For the 2008-09 year the White student population had a participation rate of 98.88 percent, a decrease of 0.18 percentage points from the previous year. All Students in the 2008-09 year had a participation rate of 98.83 percent, a decrease of 0.14 percentage points from last year.

During the 2008-09 school year there were three tests administered by the ASD. These include:

- the SBA subtests of reading, writing and mathematics to grades 3 through 10, and science to grades 4, 8 and 10
- the TerraNova 3<sup>rd</sup> Edition (TN3) to grades 5 and 7
- the HSGQE to all grade 10 students and grade 11 and 12 students who had not passed all three parts of the HSGQE

The TN3 was administered for the second year to ASD students in the 2008-09 school year, and therefore these scores from year-to-year should be comparable. Note that prior to the 2007-08 school year, ASD used the TerraNova 2<sup>nd</sup> Edition (TN2) tests.

### Attachments 2-5: SBA (p.6-29)

When comparing the SBA results of Alaska Native/American Indian students to White students and All Students for the 2008-09 school year we saw that there were higher percentages of White students than Alaska Native/American

Indian who were proficient or above on the subtests. On the SBA reading test the percent scoring proficient or above was 89.97 percent for White and 68.64 percent for Alaska Native/American Indian; in writing on the SBA the percent scoring proficient or above was 87.23 percent for White and 65.48 percent for Alaska Native/American Indian; on the mathematics subtest the percent scoring proficient or above was 80.49 percent for White and 58.20 percent for Alaska Native/American Indian; and on the science subtest the percent scoring proficient or above was 72.50 percent for White and 41.53 percent for Alaska Native/American Indian. In relation to the All Students category the numbers show that All Students scored proficient or above at a percent that was higher than Alaska Native/American Indian and less than White on all subtests.

Percent differences from 2007-08 to 2008-09 school years were identified for Alaska Native/American Indian students on SBA reading, writing and mathematics subtests. On the SBA reading subtest the percent scoring proficient or above decreased from 74.91 percent to 68.64 percent; on the SBA writing subtest the percent scoring proficient or above increased from 64.43 percent to 65.48 percent; on the SBA mathematics subtest the percent scoring proficient or above decreased from 62.30 percent to 58.20 percent; and on the SBA science subtest the percent scoring proficient or above increased from 40.77 percent to 41.53 percent.

### **Attachment 6: SBA Change (p.30-32)**

The charts presented in attachment 6 describe the change in students' mean scale scores who tested in both the 2007-08 year and the 2008-09 year. Alaska Native/American Indian students followed the patterns of increase and decrease in difference that occurred within the categories of All Students and the White students for the majority of the comparisons. For the reading and mathematics subtests, the magnitude change in scores was generally greater for Alaska Native/American Indian students than those for White and All Students groups; for the writing subtests the magnitude change was generally less for Alaska Native/American Indian students across grade levels. The only grade/subtest category in which the Alaska Native/American Indian differences were in the opposite directions as either the White or All Students groups was the writing subtest from grades 9 to 10, where there was an increase of 0.21 points for Alaska Native/American Indian students while there were decreases in scores of 3.81 and 1.02 points for White and All Student groups, respectively.

### **Attachment 7-9: TerraNova Quartiles (p.33-50)**

The ASD administered the TN3 in 2008-09. On the TN tests for grades 5 and 7 the Alaska Native/American Indian student population demonstrated opposite displays of quartile percentages than the White students. For instance, the percentage of Alaska Native/American Indian students in the lowest (1<sup>st</sup>) quartile is higher than in the highest (4<sup>th</sup>) quartile for all subtests and grades. On the other hand, for White students the percentage in the lowest (1<sup>st</sup>) quartile is lower than the highest (4<sup>th</sup>) quartile for all subtests and grades.

Comparisons of the 2007-08 to 2008-09 TN testing of Alaska Native/American Indian students demonstrated that performance between the two years appeared similar to the previous year, with the exception of TN grade 5 reading and grade 7 mathematics tests. The grade 5 reading test saw an increase in 4<sup>th</sup> and 3<sup>rd</sup> quartile percentages while the grade 7 mathematics test had an increase in 1<sup>st</sup> quartile percentages. There were slight increases in 4<sup>th</sup> quartile percentages for both the grade 7 reading and writing tests. Small 4<sup>th</sup> quartile percentage decreases were observed for the grade 5 writing test as well as a slight increase in 1<sup>st</sup> quartile percentages for the grade 5 mathematics test.

### **Attachment 10: TerraNova NCE (p.52)**

When the results for grades 5 and 7 TN mean normal curve equivalent scores were reviewed, we saw that for both grades and on all subtests the Alaska Native/American Indian students scored the lowest when compared with the White students and All Students.

When comparing the 2007-08 and the 2008-09 mean NCE score for the Alaska Native/American Indian students by grade, the mean scores for both grade 5 reading and grade 7 writing subtests rose while the grade 7 reading and all mathematics subtest scores dropped.

### **Attachment 11-14: HSGQE (p.53-60)**

When comparing the grade 10 HSGQE results of Alaska Native/American Indian students to White Students for the 2008-09 school year, the Alaska Native/American Indian students had a lower percent proficient on all the subtests than the White student population. When comparing the 2007-08 and 2008-09 results on the HSGQE for grade 10 students, we saw that there was an increase in percent proficient for Alaska Native/American Indian, White, and All Students for the reading and mathematics subtests, while the writing subtest showed decreases in percent proficient for Alaska Native/American Indian students and increases in percent proficient for White and All Students.

For grade 11 and 12 Alaska Native/American Indian students, the cumulative percent scoring proficient on the HSGQE test was reported. When comparing the HSGQE results from 2007-08 to 2008-09 for grade 11 Alaska Native/American Indian students, the percent proficient on reading increased from 90.73 percent to 91.84 percent; the percent proficient on writing decreased from 87.07 percent to 84.10 percent; and the percent proficient on mathematics increased from 83.62 percent to 84.10 percent. When comparing the HSGQE results from 2007-08 to 2008-09 for grade 12 Alaska Native/American Indian students, the percent proficient on reading decreased from 91.01 percent to 89.85 percent; the percent proficient on writing decreased from 89.69 percent to 89.40 percent; and the percent proficient on mathematics decreased from 88.60 percent to 87.42 percent.

### **Attachment 15-16: Dropout and Graduation Rates (p. 61-62)**

The dropout rate for the 2008-09 year Alaska Native/American Indian student population had a decrease of 1.12 percentage points from the 2007-08 school year, while the White student population had a decrease of 0.06 percentage points and the All Students category had a decrease of 0.41 percentage points.

The graduation rate of Alaska Native/American Indian students for the 2008-09 year had an increase of 9.91 percentage points from the 2007-08 school year, while the White students had an increase of 6.39 percentage points and All Students had an increase of 5.52 percentage points. The graduation rate of Alaska Native/American Indian students from the ASD for school year 2008-09 was 56.11 percent.

### **Attachment 17: Gifted Students (p.63)**

The number of Alaska Native/American Indian students identified as gifted in the 2008-09 school year was 332 students. This was 9.31 percent of the district's gifted student population for 2008-09, an increase in percentage over the figures for the 2007-08 school year (8.63 percent).

### **Attachment 18: Mathematics Advancement (p.64)**

In the 2007-08 school year 617 Alaska Native/American Indian students were enrolled in grade 8. Of these students 11.51 percent completed Algebra I with a C or better by the end of their grade 8 year. In the 2008-09 school year 580 Alaska Native/American Indian students were enrolled in grade 8. Of those students, 12.24 percent completed Algebra I with a C or better by the end of their grade 8 year. This was an increase of 0.73 percentage points from the previous year.

Of the Alaska Native/American Indian students who successfully completed Algebra I with a B or better in grade 8 in 2007-08 and who returned to the ASD in grade 9 in 2008-09, 75.51 percent completed their grade 9 Geometry or Algebra II class with a grade of C or better in 2008-09. This was an increase of 9.55 percentage points from the previous year.

### **Attachment 19: Achievement Gap (p.65)**

The achievement gap of Alaska Native/American Indian students to White students between the 2008-09 school year and the 2007-08 school year had an increase of 2.34 percentage points in language arts and an increase of 2.54 percentage points in mathematics.

**Attachment 1: Participation Rates  
(Tested in Reading, Writing or Mathematics SBA)**

2008-09 Participation Rate for Alaska Native/American Indian, White  
and All Students

Alaska Native/American Indian		Tested	Enrolled	Participation Rate
		N	N	%
GRADE	3	686	689	99.56%
	4	720	731	98.50%
	5	627	631	99.37%
	6	617	619	99.68%
	7	623	637	97.80%
	8	569	580	98.10%
	9	567	591	95.94%
	10	503	522	96.36%
	<b>Total</b>	<b>4,912</b>	<b>5,000</b>	<b>98.24%</b>

White		Tested	Enrolled	Participation Rate
		N	N	%
GRADE	3	1,693	1,706	99.24%
	4	1,720	1,742	98.74%
	5	1,692	1,700	99.53%
	6	1,735	1,749	99.20%
	7	1,747	1,765	98.98%
	8	1,850	1,868	99.04%
	9	1,883	1,908	98.69%
	10	1,868	1,910	97.80%
	<b>Total</b>	<b>14,188</b>	<b>14,348</b>	<b>98.88%</b>

All Students		Tested	Enrolled	Participation Rate
		N	N	%
GRADE	3	3,742	3,763	99.44%
	4	3,789	3,839	98.70%
	5	3,571	3,588	99.53%
	6	3,602	3,622	99.45%
	7	3,570	3,609	98.92%
	8	3,678	3,715	99.00%
	9	3,674	3,744	98.13%
	10	3,528	3,618	97.51%
	<b>Total</b>	<b>29,154</b>	<b>29,498</b>	<b>98.83%</b>

2007-08 Participation Rate for Alaska Native/American Indian, White  
and All Students

Alaska Native/American Indian		Tested	Enrolled	Participation Rate
		N	N	%
GRADE	3	737	745	98.93%
	4	634	641	98.91%
	5	625	628	99.52%
	6	656	662	99.68%
	7	577	588	98.13%
	8	609	617	98.70%
	9	554	576	96.18%
	10	552	573	96.34%
	<b>Total</b>	<b>4,944</b>	<b>5,030</b>	<b>98.29%</b>

White		Tested	Enrolled	Participation Rate
		N	N	%
GRADE	3	1,712	1,720	99.53%
	4	1,674	1,688	99.17%
	5	1,726	1,738	99.31%
	6	1,725	1,731	99.65%
	7	1,844	1,855	99.41%
	8	1,897	1,908	99.42%
	9	1,920	1,947	98.61%
	10	1,966	2,014	97.62%
	<b>Total</b>	<b>14,464</b>	<b>14,601</b>	<b>99.06%</b>

All Students		Tested	Enrolled	Participation Rate
		N	N	%
GRADE	3	3,719	3,738	99.49%
	4	3,491	3,519	99.20%
	5	3,506	3,525	99.46%
	6	3,534	3,553	99.47%
	7	3,612	3,635	99.37%
	8	3,692	3,717	99.33%
	9	3,643	3,713	98.11%
	10	3,610	3,706	97.41%
	<b>Total</b>	<b>28,807</b>	<b>29,106</b>	<b>98.97%</b>

## Attachment 2: SBA Reading Performance Levels and Proficiency

2008-09 SBA Reading Performance Level for Alaska Native/American Indian, White and All Students

Alaska Native/American Indian		Reading Performance Level							
		Advanced		Proficient		Below		Far Below	
		N	%	N	%	N	%	N	%
GRADE	3	183	27.27%	294	43.82%	89	13.26%	105	15.65%
	4	99	13.94%	374	52.68%	126	17.75%	111	15.63%
	5	110	17.89%	328	53.33%	115	18.70%	62	10.08%
	6	94	15.67%	283	47.17%	169	28.17%	54	9.00%
	7	142	23.16%	307	50.08%	111	18.11%	53	8.65%
	8	94	17.03%	312	56.52%	102	18.48%	44	7.97%
	9	150	43.10%	22	6.32%	142	40.80%	34	9.77%
	10	103	21.33%	257	53.21%	108	22.36%	15	3.11%
	Total	975	21.23%	2,177	47.41%	962	20.95%	478	10.41%

White		Reading Performance Level							
		Advanced		Proficient		Below		Far Below	
		N	%	N	%	N	%	N	%
GRADE	3	908	54.27%	582	34.79%	91	5.44%	92	5.50%
	4	713	41.74%	794	46.49%	110	6.44%	91	5.33%
	5	736	43.84%	789	46.99%	106	6.31%	48	2.86%
	6	839	48.69%	712	41.32%	138	8.01%	34	1.97%
	7	814	47.16%	743	43.05%	118	6.84%	51	2.95%
	8	801	43.75%	854	46.64%	133	7.26%	43	2.35%
	9	1,048	56.16%	610	32.69%	179	9.59%	29	1.55%
	10	937	51.71%	732	40.40%	135	7.45%	8	0.44%
	Total	6,796	48.48%	5,816	41.49%	1,010	7.21%	396	2.82%

All Students		Reading Performance Level							
		Advanced		Proficient		Below		Far Below	
		N	%	N	%	N	%	N	%
GRADE	3	1,492	40.58%	1,475	40.11%	371	10.09%	339	9.22%
	4	1,050	28.04%	1,888	50.43%	475	12.69%	331	8.84%
	5	1,098	31.19%	1,775	50.43%	443	12.59%	204	5.80%
	6	1,240	34.92%	1,574	44.33%	556	15.66%	181	5.10%
	7	1,211	34.42%	1,643	46.70%	471	13.39%	193	5.49%
	8	1,151	31.79%	1,817	50.18%	490	13.53%	163	4.50%
	9	1,577	43.67%	1,336	37.00%	578	16.01%	120	3.32%
	10	1,297	38.00%	1,596	46.76%	474	13.89%	46	1.35%
	Total	10,116	35.30%	13,104	45.73%	3,858	13.46%	1,577	5.50%

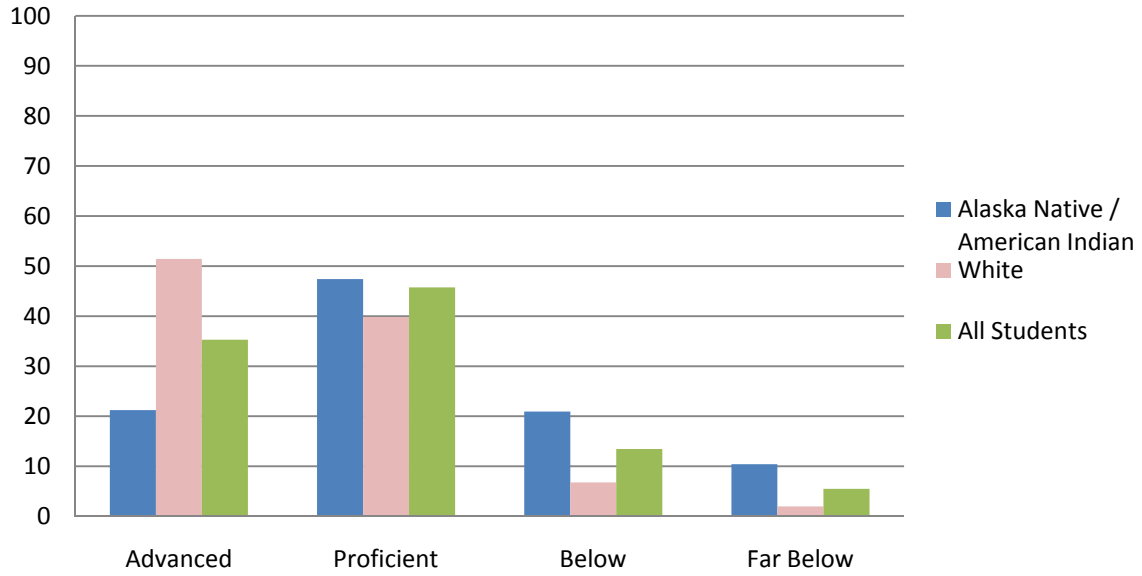
2007-08 SBA Reading Performance Level for Alaska Native/American Indian, White and All Students

Alaska Native/American Indian		Reading Performance Level							
		Advanced		Proficient		Below		Far Below	
		N	%	N	%	N	%	N	%
GRADE	3	181	25.31%	313	43.78%	138	19.30%	83	11.61%
	4	148	23.68%	331	52.96%	74	11.84%	72	11.52%
	5	116	18.80%	348	56.40%	118	19.12%	35	5.67%
	6	187	28.81%	319	49.15%	120	18.49%	23	3.54%
	7	117	21.01%	302	54.22%	105	18.85%	33	5.92%
	8	144	24.24%	307	51.68%	113	19.02%	30	5.05%
	9	173	31.86%	247	45.49%	112	20.63%	11	2.03%
	10	92	17.59%	288	55.07%	117	22.37%	26	4.97%
	Total	1,158	24.01%	2,455	50.90%	897	18.60%	313	6.49%

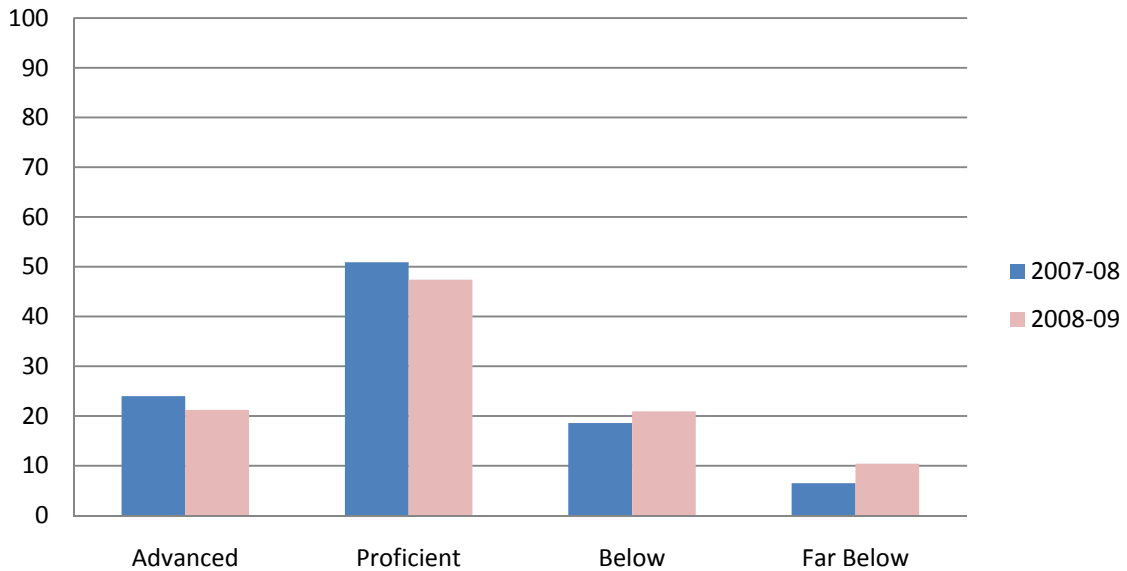
White		Reading Performance Level							
		Advanced		Proficient		Below		Far Below	
		N	%	N	%	N	%	N	%
GRADE	3	926	54.57%	574	33.82%	134	7.90%	63	3.71%
	4	900	54.25%	611	36.83%	89	5.36%	59	3.56%
	5	812	47.26%	766	44.59%	113	6.58%	27	1.57%
	6	943	55.08%	631	36.86%	118	6.89%	20	1.17%
	7	826	45.16%	819	44.78%	144	7.87%	40	2.19%
	8	935	49.81%	789	42.04%	125	6.66%	28	1.49%
	9	1,223	64.61%	537	28.37%	116	6.13%	17	0.90%
	10	790	41.19%	968	50.47%	131	6.83%	29	1.51%
	Total	7,355	51.42%	5,695	39.82%	970	6.78%	283	1.98%

All Students		Reading Performance Level							
		Advanced		Proficient		Below		Far Below	
		N	%	N	%	N	%	N	%
GRADE	3	1,526	41.68%	1,437	39.25%	455	12.43%	243	6.64%
	4	1,371	39.83%	1,520	44.16%	314	9.12%	237	6.89%
	5	1,206	34.73%	1,748	50.33%	405	11.66%	114	3.28%
	6	1,483	42.44%	1,471	42.10%	458	13.11%	82	2.35%
	7	1,209	34.02%	1,776	49.97%	429	12.07%	140	3.94%
	8	1,414	38.85%	1,727	47.45%	402	11.04%	97	2.66%
	9	1,822	50.88%	1,279	35.72%	422	11.78%	58	1.62%
	10	1,065	30.38%	1,843	52.57%	488	13.92%	110	3.14%
	Total	11,096	39.14%	12,801	45.15%	3,373	11.90%	1,081	3.81%

## 2008-09 SBA Reading Performance Level by Race/Ethnicity



## Comparison of 2007-08 and 2008-09 Reading Performance Level for Alaska Native/American Indian Students



2008-09 SBA Reading Proficiency for Alaska Native/American Indian, White and All Students

		Reading Proficiency			
		Proficient		Not Proficient	
		N	%	N	%
Alaska Native/American Indian					
GRADE	3	477	71.09%	194	28.91%
	4	473	66.62%	237	33.38%
	5	438	71.22%	177	28.78%
	6	377	62.83%	223	37.17%
	7	449	73.25%	164	26.75%
	8	406	73.55%	146	26.45%
	9	172	49.43%	176	50.57%
	10	360	74.53%	123	25.47%
	Total	3,152	68.64%	1,440	31.36%

		Reading Proficiency			
		Proficient		Not Proficient	
		N	%	N	%
White					
GRADE	3	1,490	89.06%	183	10.94%
	4	1,507	88.23%	201	11.77%
	5	1,525	90.83%	154	9.17%
	6	1,551	90.02%	172	9.98%
	7	1,557	90.21%	169	9.79%
	8	1,655	90.39%	176	9.61%
	9	1,658	88.85%	208	11.15%
	10	1,669	92.11%	143	7.89%
	Total	12,612	89.97%	1,406	10.03%

		Reading Proficiency			
		Proficient		Not Proficient	
		N	%	N	%
All Students					
GRADE	3	2,967	80.69%	710	19.31%
	4	2,938	78.47%	806	21.53%
	5	2,873	81.62%	647	18.38%
	6	2,814	79.25%	737	20.75%
	7	2,854	81.13%	664	18.87%
	8	2,968	81.97%	653	18.03%
	9	2,913	80.67%	698	19.33%
	10	2,893	84.76%	520	15.24%
	Total	23,220	81.03%	5,435	18.97%

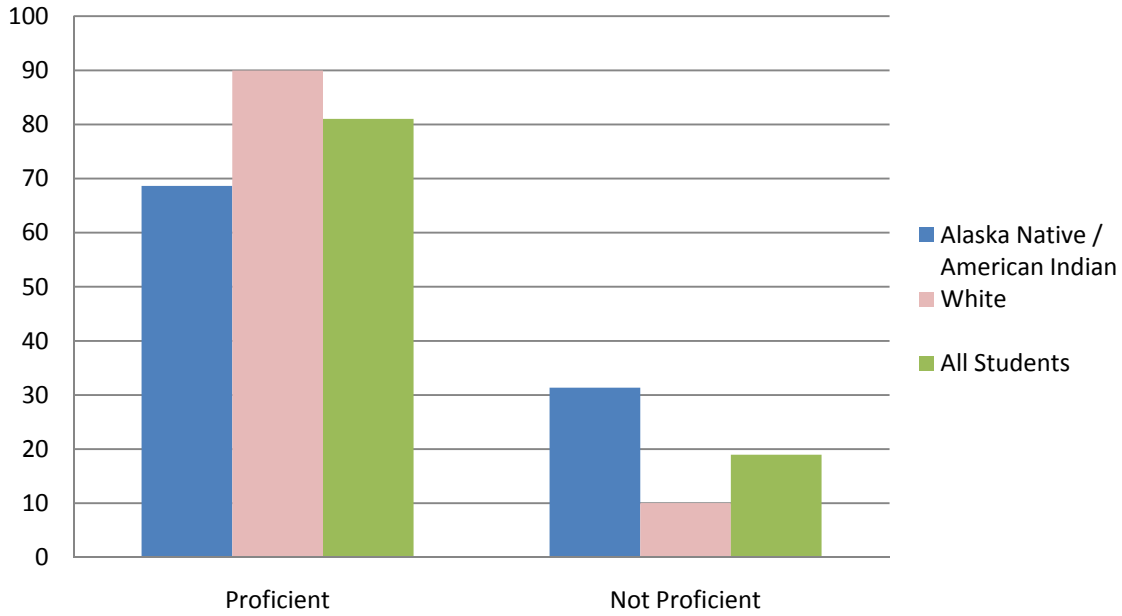
2007-08 SBA Reading Proficiency for Alaska Native/American Indian, White and All Students

		Reading Proficiency			
		Proficient		Not Proficient	
		N	%	N	%
Alaska Native/American Indian					
	3	494	69.09%	221	30.91%
	4	479	76.64%	146	23.36%
	5	464	75.20%	153	24.80%
	6	506	77.97%	143	22.03%
	7	419	75.22%	138	24.78%
	8	451	75.93%	143	24.07%
	9	420	77.35%	123	22.65%
	10	380	72.66%	143	27.34%
GRADE	Total	3,613	74.91%	1,210	25.09%

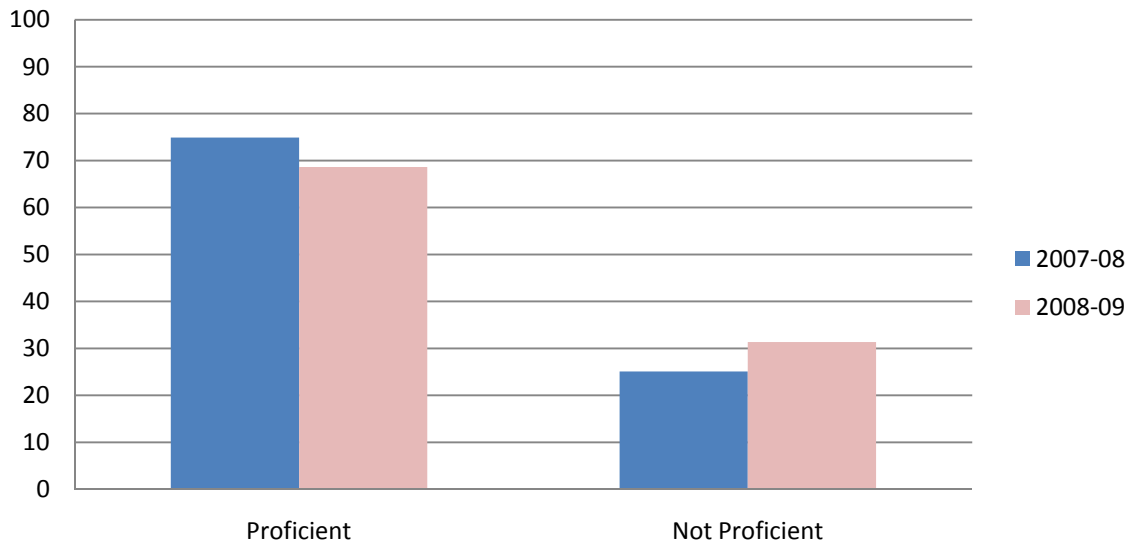
		Reading Proficiency			
		Proficient		Not Proficient	
		N	%	N	%
White					
	3	1,500	88.39%	197	11.61%
	4	1,511	91.08%	148	8.92%
	5	1,578	91.85%	140	8.15%
	6	1,574	91.94%	138	8.06%
	7	1,645	89.94%	184	10.06%
	8	1,724	91.85%	153	8.15%
	9	1,760	92.97%	133	7.03%
	10	1,758	91.66%	160	8.34%
GRADE	Total	13,050	91.24%	1,253	8.76%

		Reading Proficiency			
		Proficient		Not Proficient	
		N	%	N	%
All Students					
	3	2,963	80.93%	698	19.07%
	4	2,891	83.99%	551	16.01%
	5	2,954	85.06%	519	14.94%
	6	2,954	84.54%	540	15.46%
	7	2,985	83.99%	569	16.01%
	8	3,141	86.29%	499	13.71%
	9	3,101	86.60%	480	13.40%
	10	2,908	82.94%	598	17.06%
GRADE	Total	23,897	84.29%	4,454	15.71%

## 2008-09 SBA Reading Proficiency by Race/Ethnicity



## Comparison of 2007-08 and 2008-09 Reading Proficiency for Alaska Native/American Indian Students



### Attachment 3: SBA Writing Performance Levels and Proficiency

2008-09 SBA Writing Performance Level for Alaska Native/American Indian, White and All Students

Alaska Native/American Indian		Writing Performance Level							
		Advanced		Proficient		Below		Far Below	
		N	%	N	%	N	%	N	%
GRADE	3	134	19.94%	334	49.70%	183	27.23%	21	3.13%
	4	107	15.05%	359	50.49%	225	31.65%	20	2.81%
	5	114	18.45%	319	51.62%	178	28.80%	7	1.13%
	6	107	17.89%	251	41.97%	206	34.45%	34	5.69%
	7	47	7.68%	362	59.15%	142	23.20%	61	9.97%
	8	22	4.00%	335	60.91%	139	25.27%	54	9.82%
	9	11	2.11%	329	63.03%	131	25.10%	51	9.77%
	10	3	0.76%	229	57.97%	128	32.41%	35	8.86%
	Total	545	11.65%	2,518	53.83%	1332	28.47%	283	6.05%

White		Writing Performance Level							
		Advanced		Proficient		Below		Far Below	
		N	%	N	%	N	%	N	%
GRADE	3	721	43.04%	742	44.30%	196	11.70%	16	0.96%
	4	636	37.21%	872	51.02%	189	11.06%	12	0.70%
	5	720	42.86%	784	46.67%	174	10.36%	2	0.12%
	6	808	46.89%	679	39.41%	210	12.19%	26	1.51%
	7	436	25.20%	1,039	60.06%	181	10.46%	74	4.28%
	8	226	12.38%	1,358	74.41%	199	10.90%	42	2.30%
	9	182	9.81%	1,428	76.98%	177	9.54%	68	3.67%
	10	106	5.79%	1,499	81.87%	187	10.21%	39	2.13%
	Total	3,835	27.34%	8,401	59.89%	1,513	10.79%	279	1.99%

All Students		Writing Performance Level							
		Advanced		Proficient		Below		Far Below	
		N	%	N	%	N	%	N	%
GRADE	3	1,185	32.18%	1,696	46.06%	732	19.88%	69	1.87%
	4	1,011	27.00%	1,965	52.47%	722	19.28%	47	1.26%
	5	1,132	32.10%	1,725	48.91%	651	18.46%	19	0.54%
	6	1,254	35.34%	1,466	41.32%	712	20.07%	116	3.27%
	7	613	17.38%	2,058	58.35%	629	17.83%	227	6.44%
	8	318	8.81%	2,490	68.99%	620	17.18%	181	5.02%
	9	228	6.35%	2,585	72.03%	547	15.24%	229	6.38%
	10	124	3.62%	2,579	75.21%	578	16.86%	148	4.32%
	Total	5,865	20.47%	16,564	57.80%	5,191	18.11%	1,036	3.62%

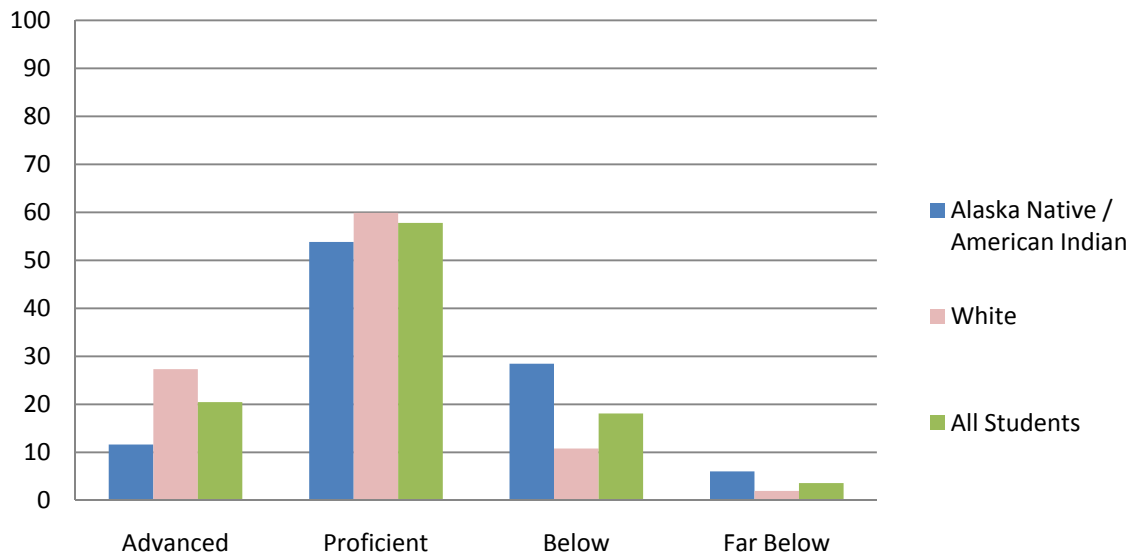
2007-08 SBA Writing Performance Level for Alaska Native/American Indian, White and All Students

Alaska Native/American Indian		Writing Performance Level							
		Advanced		Proficient		Below		Far Below	
		N	%	N	%	N	%	N	%
GRADE	3	153	21.40%	318	44.48%	201	28.11%	43	6.01%
	4	130	20.93%	312	50.24%	167	26.89%	12	1.93%
	5	105	17.07%	295	47.97%	205	33.33%	10	1.63%
	6	139	21.38%	295	45.38%	180	27.69%	36	5.54%
	7	35	6.24%	316	56.33%	164	29.23%	46	8.20%
	8	17	2.86%	340	57.14%	151	25.38%	87	14.62%
	9	6	1.11%	324	60.00%	143	26.48%	67	12.41%
	10	6	1.12%	323	60.26%	156	29.10%	51	9.51%
	Total	591	12.23%	2,523	52.20%	1367	28.28%	352	7.28%

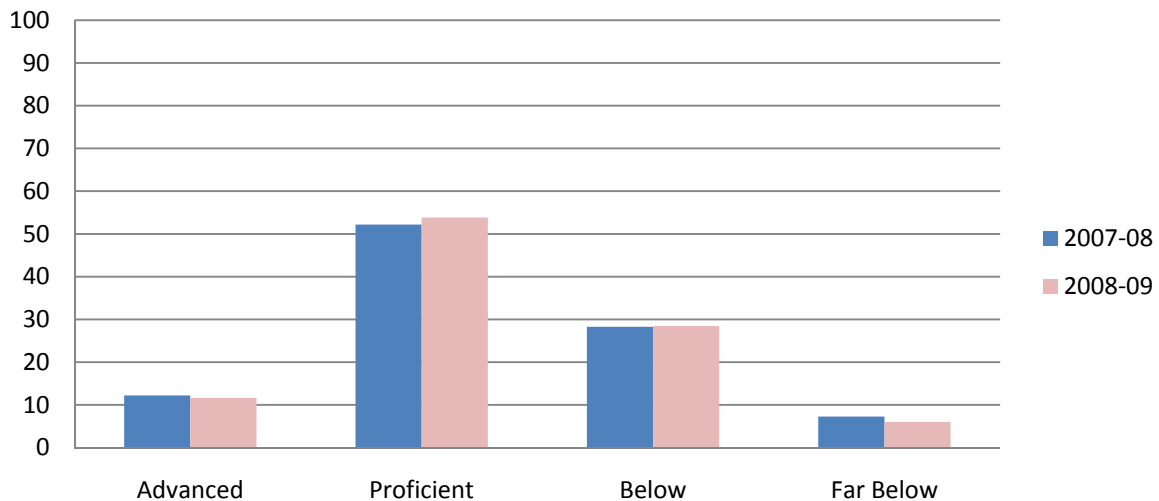
White		Writing Performance Level							
		Advanced		Proficient		Below		Far Below	
		N	%	N	%	N	%	N	%
GRADE	3	798	47.02%	672	39.60%	197	11.61%	30	1.77%
	4	775	46.63%	714	42.96%	165	9.93%	8	0.48%
	5	725	42.27%	781	45.54%	206	12.01%	3	0.17%
	6	814	47.57%	677	39.57%	194	11.34%	26	1.52%
	7	360	19.68%	1,139	62.27%	260	14.22%	70	3.83%
	8	242	12.86%	1,325	70.40%	236	12.54%	79	4.20%
	9	242	12.81%	1,400	74.11%	185	9.79%	62	3.28%
	10	157	8.14%	1,507	78.16%	219	11.36%	45	2.33%
	Total	4,113	28.74%	8,215	57.40%	1,662	11.61%	323	2.26%

All Students		Writing Performance Level							
		Advanced		Proficient		Below		Far Below	
		N	%	N	%	N	%	N	%
GRADE	3	1,322	36.10%	1,532	41.84%	699	19.09%	109	2.98%
	4	1,199	34.83%	1,621	47.09%	588	17.08%	34	0.99%
	5	1,126	32.50%	1,612	46.52%	709	20.46%	18	0.52%
	6	1,257	35.97%	1,459	41.75%	645	18.45%	134	3.83%
	7	521	14.64%	2,101	59.03%	722	20.29%	215	6.04%
	8	333	9.14%	2,415	66.27%	623	17.10%	273	7.49%
	9	299	8.38%	2,460	68.93%	583	16.34%	227	6.36%
	10	205	5.82%	2,495	70.82%	640	18.17%	183	5.19%
	Total	6,262	22.08%	15,695	55.34%	5,209	18.37%	1,193	4.21%

## 2008-09 SBA Writing Performance Level by Race/Ethnicity



## Comparison of 2007-08 and 2008-09 Writing Performance Level for Alaska Native/American Indian Students



2008-09 SBA Writing Proficiency for Alaska Native/American Indian, White and All Students

		Writing Proficiency			
		Proficient		Not Proficient	
		N	%	N	%
Alaska Native/American Indian					
	3	468	69.64%	204	30.36%
	4	466	65.54%	245	34.46%
	5	433	70.06%	185	29.94%
	6	358	59.87%	240	40.13%
	7	409	66.83%	203	33.17%
	8	357	64.91%	193	35.09%
	9	340	65.13%	182	34.87%
	10	232	58.73%	163	41.27%
GRADE	Total	3,063	65.48%	1,615	34.52%

		Writing Proficiency			
		Proficient		Not Proficient	
		N	%	N	%
White					
	3	1,463	87.34%	212	12.66%
	4	1,508	88.24%	201	11.76%
	5	1,504	89.52%	176	10.48%
	6	1,487	86.30%	236	13.70%
	7	1,475	85.26%	255	14.74%
	8	1,584	86.79%	241	13.21%
	9	1,610	86.79%	245	13.21%
	10	1,605	87.66%	226	12.34%
GRADE	Total	12,236	87.23%	1,792	12.77%

		Writing Proficiency			
		Proficient		Not Proficient	
		N	%	N	%
All Students					
	3	2,881	78.25%	801	21.75%
	4	2,976	79.47%	769	20.53%
	5	2,857	81.00%	670	19.00%
	6	2,720	76.66%	828	23.34%
	7	2,671	75.73%	856	24.27%
	8	2,808	77.81%	801	22.19%
	9	2,813	78.38%	776	21.62%
	10	2,703	78.83%	726	21.17%
GRADE	Total	22,429	78.27%	6,227	21.73%

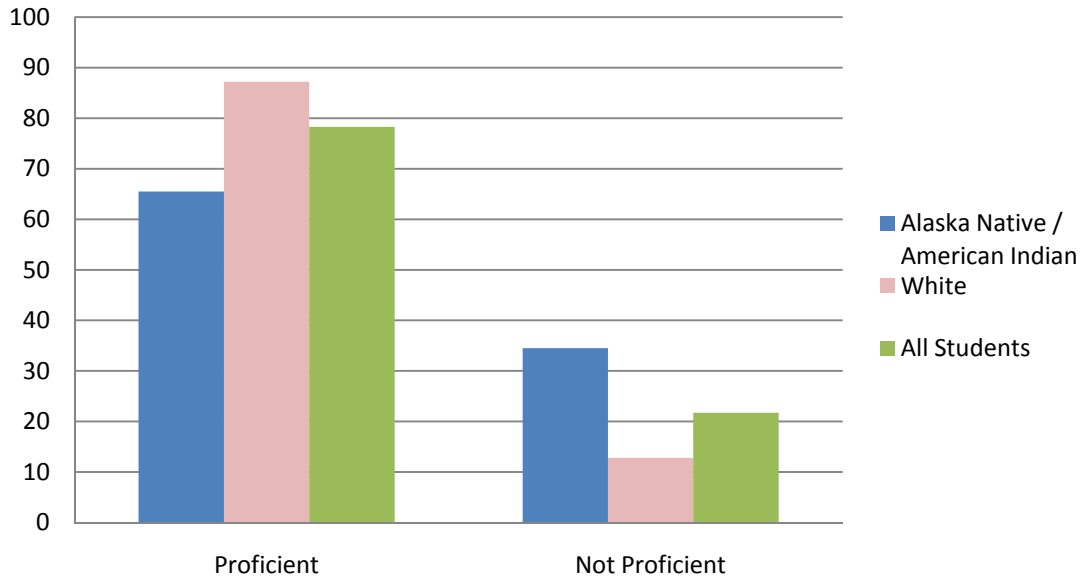
2007-08 SBA Writing Proficiency for Alaska Native/American Indian, White and All Students

		Writing Proficiency			
		Proficient		Not Proficient	
		N	%	N	%
Alaska Native/American Indian					
	3	471	65.87%	244	34.13%
	4	442	71.18%	179	28.82%
	5	400	65.04%	215	34.96%
	6	434	66.77%	216	33.23%
	7	351	62.57%	210	37.43%
	8	357	60.00%	238	40.00%
	9	330	61.11%	210	38.89%
	10	329	61.38%	207	38.62%
GRADE	Total	3,114	64.43%	1,719	35.57%

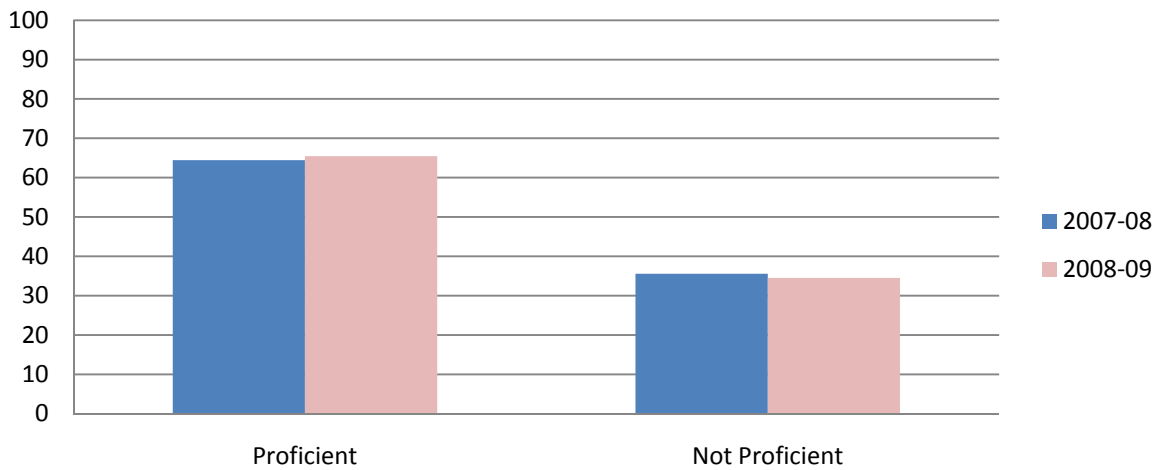
		Writing Proficiency			
		Proficient		Not Proficient	
		N	%	N	%
White					
	3	1,470	86.62%	227	13.38%
	4	1,489	89.59%	173	10.41%
	5	1,506	87.81%	209	12.19%
	6	1,491	87.14%	220	12.86%
	7	1,499	81.96%	330	18.04%
	8	1,567	83.26%	315	16.74%
	9	1,642	86.92%	247	13.08%
	10	1,664	86.31%	264	13.69%
GRADE	Total	12,328	86.13%	1,985	13.87%

		Writing Proficiency			
		Proficient		Not Proficient	
		N	%	N	%
All Students					
	3	2,854	77.94%	808	22.06%
	4	2,820	81.93%	622	18.07%
	5	2,738	79.02%	727	20.98%
	6	2,716	77.71%	779	22.29%
	7	2,622	73.67%	937	26.33%
	8	2,748	75.41%	896	24.59%
	9	2,759	77.30%	810	22.70%
	10	2,700	76.64%	823	23.36%
GRADE	Total	21,957	77.43%	6,402	22.57%

### 2008-09 SBA Writing Proficiency by Race/Ethnicity



### Comparison of 2007-08 and 2008-09 Writing Proficiency for Alaska Native/American Indian Students



### Attachment 4: SBA Mathematics Performance Levels and Proficiency

2008-09 SBA Mathematics Performance Level for Alaska Native/American Indian, White and All Students

		Mathematics Performance Level							
		Advanced		Proficient		Below		Far Below	
		N	%	N	%	N	%	N	%
GRADE	3	152	22.65%	301	44.86%	97	14.46%	121	18.03%
	4	159	22.46%	272	38.42%	117	16.53%	160	22.60%
	5	153	24.88%	226	36.75%	122	19.84%	114	18.54%
	6	132	22.26%	205	34.57%	125	21.08%	131	22.09%
	7	124	20.26%	238	38.89%	156	25.49%	94	15.36%
	8	101	18.23%	193	34.84%	131	23.65%	129	23.29%
	9	90	16.48%	161	29.49%	121	22.16%	174	31.87%
	10	37	7.66%	239	49.48%	110	22.77%	97	20.08%
	Total	948	19.82%	1,835	38.37%	979	20.47%	1,020	21.33%

White		Mathematics Performance Level							
		Advanced		Proficient		Below		Far Below	
		N	%	N	%	N	%	N	%
GRADE	3	779	46.48%	678	40.45%	122	7.28%	97	5.79%
	4	834	48.86%	614	35.97%	143	8.38%	116	6.80%
	5	833	49.61%	563	33.53%	182	10.84%	101	6.02%
	6	878	51.11%	530	30.85%	180	10.48%	130	7.57%
	7	681	39.46%	661	38.30%	266	15.41%	118	6.84%
	8	661	36.22%	752	41.21%	238	13.04%	174	9.53%
	9	643	34.61%	700	37.67%	285	15.34%	230	12.38%
	10	521	28.63%	948	52.09%	252	13.85%	99	5.44%
	Total	5,830	41.62%	5,446	38.88%	1,668	11.91%	1,065	7.60%

All Students		Mathematics Performance Level							
		Advanced		Proficient		Below		Far Below	
		N	%	N	%	N	%	N	%
GRADE	3	1,268	34.35%	1,575	42.67%	393	10.65%	455	12.33%
	4	1,347	35.86%	1,469	39.11%	442	11.77%	498	13.26%
	5	1,368	38.71%	1,230	34.80%	524	14.83%	412	11.66%
	6	1,398	39.56%	1,140	32.26%	514	14.54%	482	13.64%
	7	1,064	30.23%	1,313	37.30%	721	20.48%	422	11.99%
	8	996	27.53%	1,385	38.28%	623	17.22%	614	16.97%
	9	976	27.10%	1,282	35.59%	662	18.38%	682	18.93%
	10	699	20.40%	1,739	50.76%	628	18.33%	360	10.51%
	Total	9,116	31.78%	11,133	38.82%	4,507	15.71%	3,925	13.69%

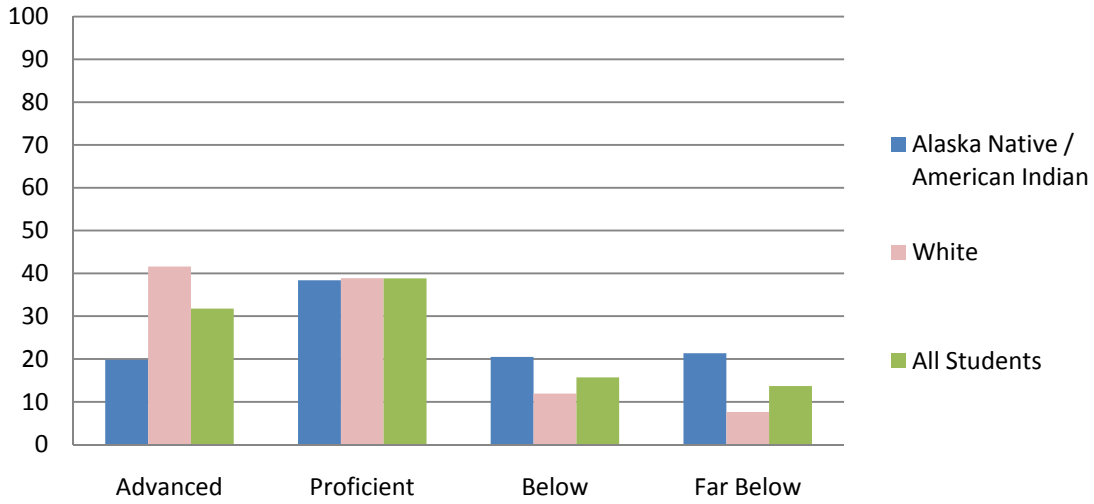
2007-08 SBA Mathematics Performance Level for Alaska Native/American Indian, White and All Students

Alaska Native/American Indian		Mathematics Performance Level							
		Advanced		Proficient		Below		Far Below	
		N	%	N	%	N	%	N	%
GRADE	3	164	22.47%	323	44.25%	106	14.52%	137	18.77%
	4	157	25.20%	262	42.05%	112	17.98%	92	14.77%
	5	185	29.98%	218	35.33%	127	20.58%	87	14.10%
	6	191	29.57%	250	38.70%	108	16.72%	97	15.02%
	7	121	21.68%	209	37.46%	144	25.81%	84	15.05%
	8	112	18.89%	229	38.62%	111	18.72%	141	23.78%
	9	112	21.01%	191	35.83%	123	23.08%	107	20.08%
	10	58	11.11%	222	42.53%	119	22.80%	123	23.56%
	Total	1,100	22.81%	1,904	39.49%	950	19.70%	868	18.00%

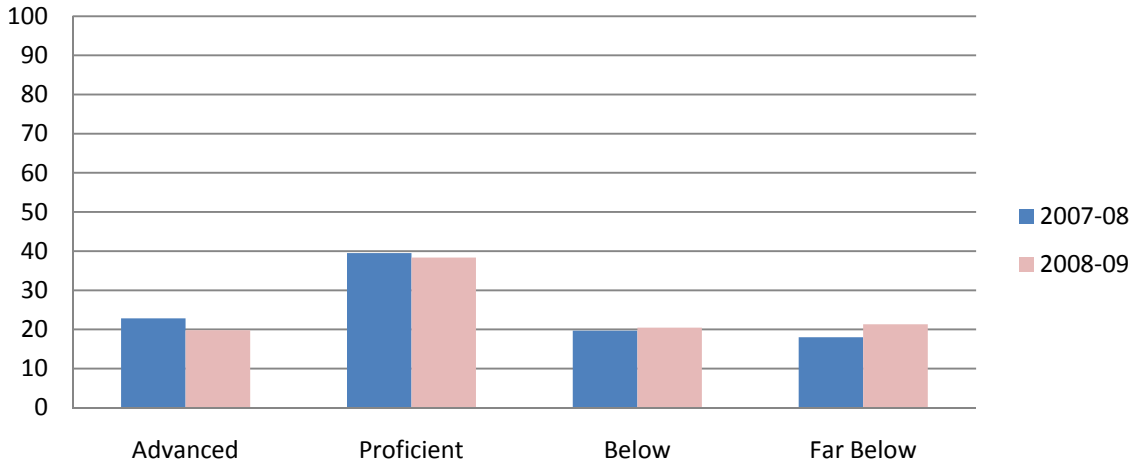
White		Mathematics Performance Level							
		Advanced		Proficient		Below		Far Below	
		N	%	N	%	N	%	N	%
GRADE	3	824	48.47%	684	40.24%	87	5.12%	105	6.18%
	4	807	48.56%	610	36.70%	139	8.36%	106	6.38%
	5	987	57.52%	491	28.61%	171	9.97%	67	3.90%
	6	853	49.91%	601	35.17%	173	10.12%	82	4.80%
	7	777	42.51%	695	38.02%	246	13.46%	110	6.02%
	8	712	38.12%	728	38.97%	270	14.45%	158	8.46%
	9	875	46.44%	616	32.70%	259	13.75%	134	7.11%
	10	556	28.88%	910	47.27%	301	15.64%	158	8.21%
	Total	6,391	44.72%	5,335	37.33%	1,646	11.52%	920	6.44%

All Students		Mathematics Performance Level							
		Advanced		Proficient		Below		Far Below	
		N	%	N	%	N	%	N	%
GRADE	3	1,320	35.78%	1,589	43.07%	343	9.30%	437	11.85%
	4	1,301	37.61%	1,358	39.26%	423	12.23%	377	10.90%
	5	1,608	46.26%	1,085	31.21%	513	14.76%	270	7.77%
	6	1,394	39.84%	1,312	37.50%	481	13.75%	312	8.92%
	7	1,182	33.21%	1,336	37.54%	673	18.91%	368	10.34%
	8	1,071	29.49%	1,432	39.43%	612	16.85%	517	14.23%
	9	1,300	36.63%	1,191	33.56%	600	16.91%	458	12.91%
	10	751	21.46%	1,557	44.49%	692	19.77%	500	14.29%
	Total	9,927	35.00%	10,860	38.29%	4,337	15.29%	3,239	11.42%

## 2008-09 SBA Math Performance Level by Race/Ethnicity



## Comparison of 2007-08 and 2008-09 Math Performance Level for Alaska Native/American Indian Students



2008-09 SBA Mathematics Proficiency for Alaska Native/American Indian, White and All Students

		Mathematics Proficiency			
		Proficient		Not Proficient	
		N	%	N	%
Alaska Native/American Indian					
GRADE	3	453	67.51%	218	32.49%
	4	431	60.88%	277	39.12%
	5	379	61.63%	236	38.37%
	6	337	56.83%	256	43.17%
	7	362	59.15%	250	40.85%
	8	294	53.07%	260	46.93%
	9	251	45.97%	295	54.03%
	10	276	57.14%	207	42.86%
	Total	2,783	58.20%	1,999	41.80%

		Mathematics Proficiency			
		Proficient		Not Proficient	
		N	%	N	%
White					
GRADE	3	1,457	86.93%	219	13.07%
	4	1,448	84.83%	259	15.17%
	5	1,396	83.14%	283	16.86%
	6	1,408	81.96%	310	18.04%
	7	1,342	77.75%	384	22.25%
	8	1,413	77.42%	412	22.58%
	9	1,343	72.28%	515	27.72%
	10	1,469	80.71%	351	19.29%
	Total	11,276	80.49%	2,733	19.51%

		Mathematics Proficiency			
		Proficient		Not Proficient	
		N	%	N	%
All Students					
GRADE	3	2,843	77.03%	848	22.97%
	4	2,816	74.97%	940	25.03%
	5	2,598	73.51%	936	26.49%
	6	2,538	71.82%	996	28.18%
	7	2,377	67.53%	1,143	32.47%
	8	2,381	65.81%	1,237	34.19%
	9	2,258	62.69%	1,344	37.31%
	10	2,438	71.16%	988	28.84%
	Total	20,249	70.60%	8,432	29.40%

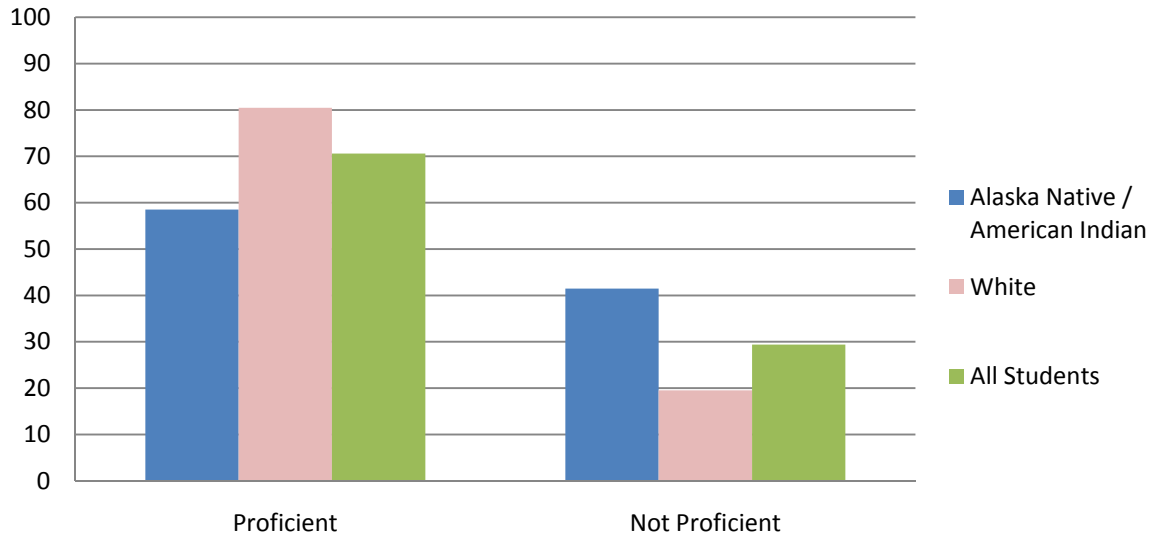
2007-08 SBA Mathematics Proficiency for Alaska Native/American Indian, White and All Students

Alaska Native/American Indian		Mathematics Proficiency			
		Proficient		Not Proficient	
		N	%	N	%
GRADE	3	487	66.71%	243	33.29%
	4	419	67.26%	204	32.74%
	5	403	65.32%	214	34.68%
	6	441	68.27%	205	31.73%
	7	330	59.14%	228	40.86%
	8	341	57.50%	252	42.50%
	9	303	56.85%	230	43.15%
	10	280	53.64%	242	46.36%
	Total	3,004	62.30%	1,818	37.70%

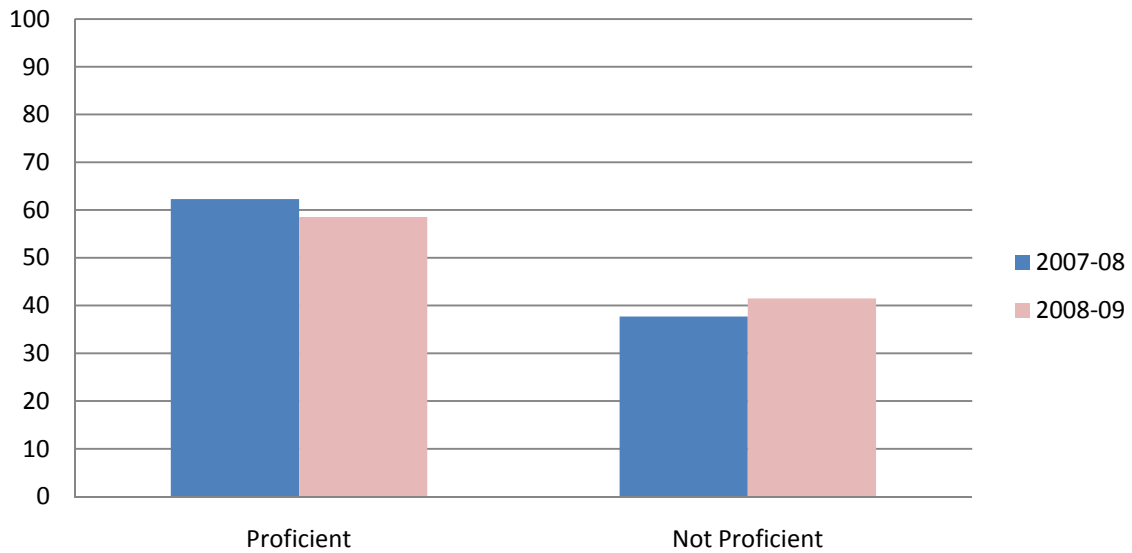
White		Mathematics Proficiency			
		Proficient		Not Proficient	
		N	%	N	%
GRADE	3	1,508	88.71%	192	11.29%
	4	1,417	85.26%	245	14.74%
	5	1,478	86.13%	238	13.87%
	6	1,454	85.08%	255	14.92%
	7	1,472	80.53%	356	19.47%
	8	1,440	77.09%	428	22.91%
	9	1,491	79.14%	393	20.86%
	10	1,466	76.16%	459	23.84%
	Total	11,726	82.05%	2,566	17.95%

All Students		Mathematics Proficiency			
		Proficient		Not Proficient	
		N	%	N	%
GRADE	3	2,909	78.86%	780	21.14%
	4	2,659	76.87%	800	23.13%
	5	2,693	77.47%	783	22.53%
	6	2,706	77.34%	793	22.66%
	7	2,518	70.75%	1,041	29.25%
	8	2,503	68.92%	1,129	31.08%
	9	2,491	70.19%	1,058	29.81%
	10	2,308	65.94%	1,192	34.06%
	Total	20,787	73.29%	7,576	26.71%

## 2008-09 SBA Math Proficiency by Race/Ethnicity



## Comparison of 2007-08 and 2008-09 SBA Math Proficiency for Alaska Native/American Indian Students



## Attachment 5: SBA Science Performance Levels and Proficiency

2008-09 SBA Science Performance Level for Alaska Native/American Indian, White and All Students

Alaska Native/American Indian		Science Performance Level							
		Advanced		Proficient		Below		Far Below	
		N	%	N	%	N	%	N	%
GRADE	4	56	7.83%	159	22.24%	295	41.26%	205	28.67%
	8	88	15.88%	160	28.88%	138	24.91%	168	30.32%
	10	57	12.21%	201	43.04%	123	26.34%	86	18.42%
	Total	201	11.58%	520	29.95%	556	32.03%	459	26.44%

White		Science Performance Level							
		Advanced		Proficient		Below		Far Below	
		N	%	N	%	N	%	N	%
GRADE	4	526	30.85%	568	33.31%	475	27.86%	136	7.98%
	8	731	39.95%	609	33.28%	298	16.28%	192	10.49%
	10	782	42.41%	684	37.09%	268	14.53%	110	5.97%
	Total	2,039	37.91%	1,861	34.60%	1,041	19.35%	438	8.14%

All Students		Science Performance Level							
		Advanced		Proficient		Below		Far Below	
		N	%	N	%	N	%	N	%
GRADE	4	711	18.97%	992	26.47%	1,378	36.77%	667	17.80%
	8	1,019	28.20%	1,100	30.44%	752	20.81%	743	20.56%
	10	1,010	29.45%	1,319	38.47%	679	19.80%	421	12.28%
	Total	2,740	25.39%	3,411	31.61%	2,809	26.03%	1,831	16.97%

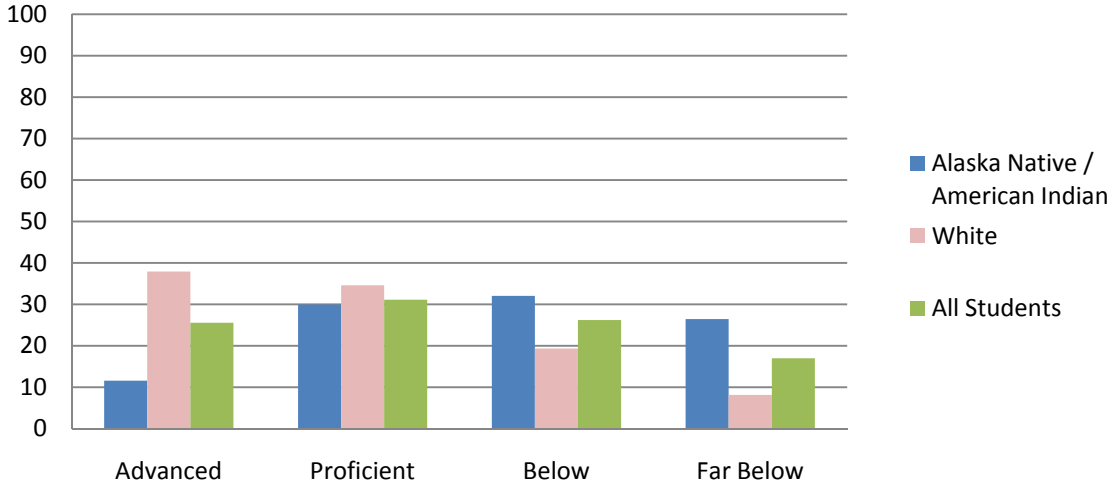
2007-08 SBA Science Performance Level for Alaska Native/American Indian, White and All Students

Alaska Native/American Indian		Science Performance Level							
		Advanced		Proficient		Below		Far Below	
		N	%	N	%	N	%	N	%
GRADE	4	59	9.61%	148	24.10%	245	39.90%	162	26.38%
	8	84	14.81%	140	24.69%	128	22.57%	215	37.92%
	10	76	15.61%	173	35.52%	122	25.05%	116	23.82%
	Total	219	13.13%	461	27.64%	495	29.68%	493	29.56%

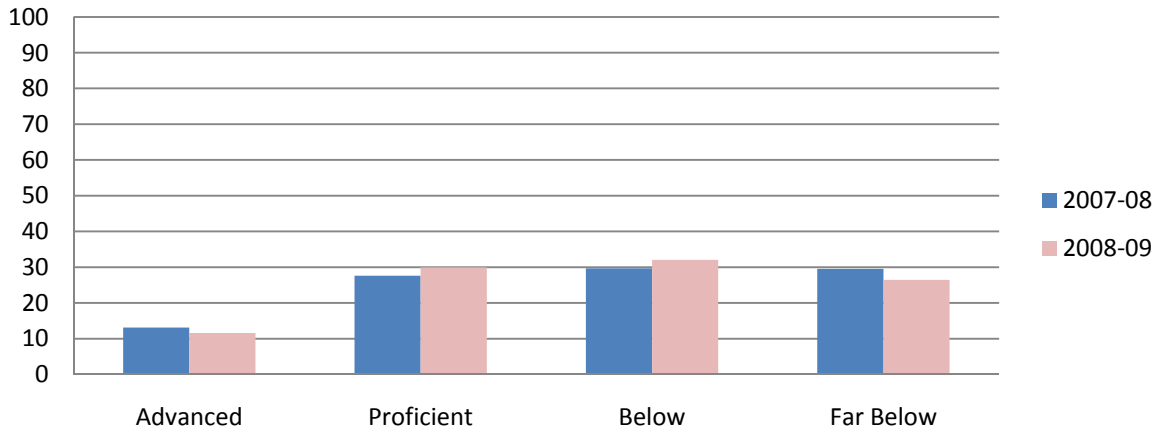
White		Science Performance Level							
		Advanced		Proficient		Below		Far Below	
		N	%	N	%	N	%	N	%
GRADE	4	602	36.44%	481	29.12%	419	25.36%	150	9.08%
	8	704	38.14%	548	29.69%	329	17.82%	265	14.36%
	10	651	34.57%	750	39.83%	308	16.36%	174	9.24%
	Total	1,957	36.37%	1,779	33.06%	1,056	19.62%	589	10.95%

All Students		Science Performance Level							
		Advanced		Proficient		Below		Far Below	
		N	%	N	%	N	%	N	%
GRADE	4	815	23.68%	880	25.57%	1,091	31.70%	656	19.06%
	8	968	27.02%	947	26.43%	740	20.65%	928	25.90%
	10	881	25.93%	1,242	36.55%	734	21.60%	541	15.92%
	Total	2,664	25.56%	3,069	29.44%	2,565	24.61%	2,125	20.39%

## 2008-09 SBA Science Performance Level by Race/Ethnicity



## Comparison of 2007-08 and 2008-09 SBA Science Performance Level for Alaska Native/American Indian Students



2008-09 SBA Science Proficiency for Alaska Native/American Indian, White and All Students

		Science Proficiency			
		Proficient		Not Proficient	
		N	%	N	%
Alaska Native/American Indian					
GRADE	4	215	30.07%	500	69.93%
	8	248	44.77%	306	55.23%
	10	258	55.25%	209	44.75%
	Total	721	41.53%	1,015	58.47%

		Science Proficiency			
		Proficient		Not Proficient	
		N	%	N	%
White					
GRADE	4	1,094	64.16%	611	35.84%
	8	1,340	73.22%	490	26.78%
	10	1,466	79.50%	378	20.50%
	Total	3,900	72.50%	1,479	27.50%

		Science Proficiency			
		Proficient		Not Proficient	
		N	%	N	%
All Students					
GRADE	4	1,703	45.44%	2,045	54.56%
	8	2,119	58.63%	1,495	41.37%
	10	2,329	67.92%	1,100	32.08%
	Total	6,151	57.00%	4,640	43.00%

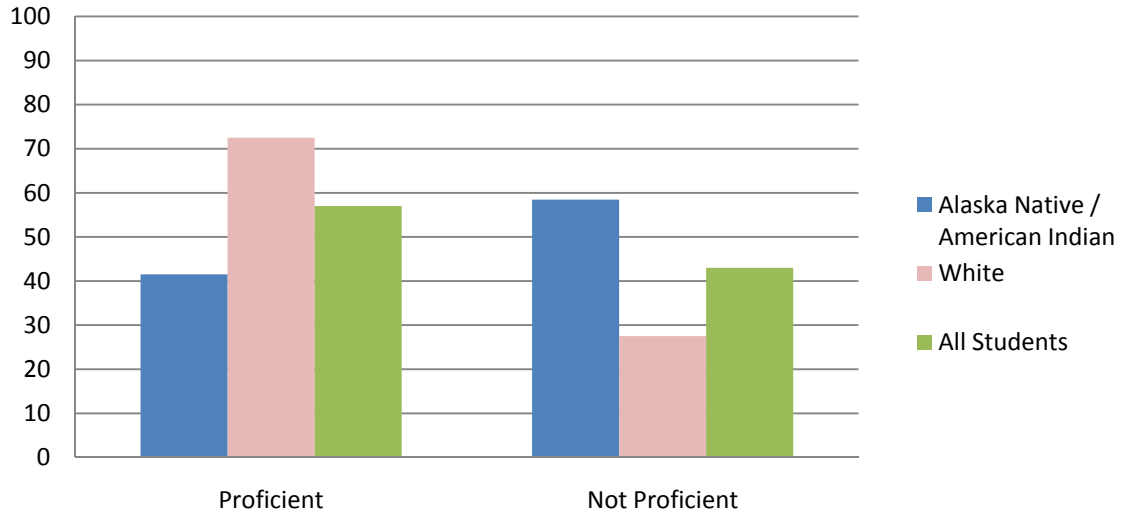
2007-08 SBA Science Proficiency for Alaska Native/American Indian, White and All Students

		Science Proficiency			
		Proficient		Not Proficient	
		N	%	N	%
Alaska Native/American Indian					
GRADE	4	207	33.71%	407	66.29%
	8	224	39.51%	343	60.49%
	10	249	51.13%	238	48.87%
	Total	680	40.77%	988	59.23%

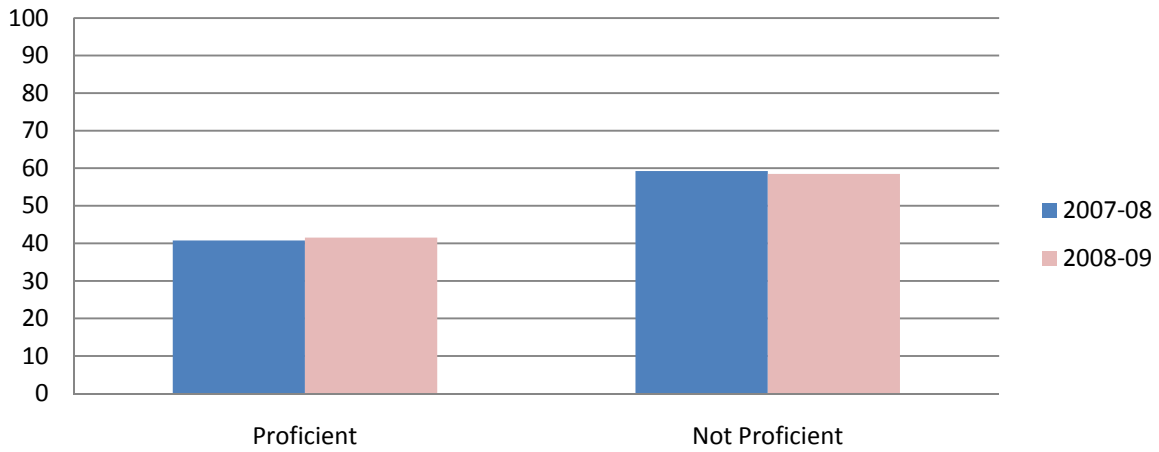
		Science Proficiency			
		Proficient		Not Proficient	
		N	%	N	%
White					
GRADE	4	1,083	65.56%	569	34.44%
	8	1,252	67.82%	594	32.18%
	10	1,401	74.40%	482	25.60%
	Total	3,736	69.43%	1,645	30.57%

		Science Proficiency			
		Proficient		Not Proficient	
		N	%	N	%
All Students					
GRADE	4	1,695	49.24%	1,747	50.76%
	8	1,915	53.45%	1,668	46.55%
	10	2,123	62.48%	1,275	37.52%
	Total	5,733	55.00%	4,690	45.00%

### 2008-09 SBA Science Proficiency by Race/Ethnicity



### Comparison of 2007-08 and 2008-09 SBA Science Proficiency for Alaska Native/American Indian Students



**Attachment 6: Change in SBA results from 2007-08 (2008) to 2008-2009 (2009)**

(Change charts measure those students who tested in both years: for example a student must test in grade 3 during the 2007-08 school year and in grade 4 during the 2008-09 school year in order to be assessed in the change model)

Reading		Average Scale Score of Students Tested in District Both Years			Average Scale Score of Students Tested in District Both Years			Average Scale Score of Students Tested in District Both Years		
		Grade 3 in 2008	Grade 4 in 2009	Difference	Grade 4 in 2008	Grade 5 in 2009	Difference	Grade 5 in 2008	Grade 6 in 2009	Difference
Ethnicity	All Students	373.86	369.01	-4.85	387.82	376.93	-10.89	383.57	369.24	-14.33
	AK Native/ American Indian	345.85	339.51	-6.34	357.65	347.81	-9.84	349.95	329.11	-20.84
	White	396.41	394.64	-1.77	414.19	401.43	-12.76	408.59	395.65	-12.94

Reading		Average Scale Score of Students Tested in District Both Years			Average Scale Score of Students Tested in District Both Years			Average Scale Score of Students Tested in District Both Years		
		Grade 6 in 2008	Grade 7 in 2009	Difference	Grade 7 in 2008	Grade 8 in 2009	Difference	Grade 8 in 2008	Grade 9 in 2009	Difference
Ethnicity	All Students	380.84	372.08	-8.76	376.83	370.08	-6.75	383.22	368.77	-14.45
	AK Native/ American Indian	359.33	349.44	-9.89	354.81	346.26	-8.55	358.14	339.8	-18.34
	White	403.65	396.06	-7.59	397.37	391.47	-5.90	401.34	389.78	-11.56

Reading		Average Scale Score of Students Tested in District Both Years		
		Grade 9 in 2008	Grade 10 in 2009	Difference
Ethnicity	All Students	387.54	378.96	-8.58
	AK Native/ American Indian	359.03	347.96	-11.07
	White	408.94	401.09	-7.85

Writing		Average Scale Score of Students Tested in District Both Years			Average Scale Score of Students Tested in District Both Years			Average Scale Score of Students Tested in District Both Years		
		Grade 3 in 2008	Grade 4 in 2009	Difference	Grade 4 in 2008	Grade 5 in 2009	Difference	Grade 5 in 2008	Grade 6 in 2009	Difference
Ethnicity	All Students	371.95	370.70	-1.25	388.48	371.97	-16.51	368.84	363.71	-5.13
	AK Native/ American Indian	340.38	338.98	-1.40	356.95	340.64	-16.31	332.67	326.56	-6.11
	White	396.21	394.32	-1.89	415.33	395.57	-19.76	391.77	386.15	-5.62

Writing		Average Scale Score of Students Tested in District Both Years			Average Scale Score of Students Tested in District Both Years			Average Scale Score of Students Tested in District Both Years		
		Grade 6 in 2008	Grade 7 in 2009	Difference	Grade 7 in 2008	Grade 8 in 2009	Difference	Grade 8 in 2008	Grade 9 in 2009	Difference
Ethnicity	All Students	370.21	357.27	-12.94	351.69	361.81	10.12	358.27	357.07	-1.20
	AK Native/ American Indian	342.29	330.98	-11.31	328.61	337.22	8.61	324.9	324.14	-0.76
	White	394.7	378.73	-15.97	369.76	380.88	11.12	377.57	376.88	-0.69

Writing		Average Scale Score of Students Tested in District Both Years		
		Grade 9 in 2008	Grade 10 in 2009	Difference
Ethnicity	All Students	366.58	365.56	-1.02
	AK Native/ American Indian	331.08	331.29	0.21
	White	388.55	384.74	-3.81

		Average Scale Score of Students Tested in District Both Years			Average Scale Score of Students Tested in District Both Years			Average Scale Score of Students Tested in District Both Years		
		Grade 3 in 2008	Grade 4 in 2009	Difference	Grade 4 in 2008	Grade 5 in 2009	Difference	Grade 5 in 2008	Grade 6 in 2009	Difference
Ethnicity	All Students	364.27	354.72	-9.55	360.91	353.71	-7.20	364.88	355.82	-9.06
	AK Native/ American Indian	337.56	326.11	-11.45	338.32	326.97	-11.35	333.54	321.38	-12.16
	White	389.51	379.23	-10.28	382.56	375.3	-7.26	384.5	377.49	-7.01

		Average Scale Score of Students Tested in District Both Years			Average Scale Score of Students Tested in District Both Years			Average Scale Score of Students Tested in District Both Years		
		Grade 6 in 2008	Grade 7 in 2009	Difference	Grade 7 in 2008	Grade 8 in 2009	Difference	Grade 8 in 2008	Grade 9 in 2009	Difference
Ethnicity	All Students	360.19	341.06	-19.13	349.64	336.09	-13.55	344.43	329.47	-14.96
	AK Native/ American Indian	341.01	321.73	-19.28	328.48	314.06	-14.42	320.68	301.24	-19.44
	White	378.14	360.6	-17.54	369.51	356.78	-12.73	361.52	346.42	-15.10

		Average Scale Score of Students Tested in District Both Years		
		Grade 9 in 2008	Grade 10 in 2009	Difference
Ethnicity	All Students	352.06	346.44	-5.62
	AK Native/ American Indian	322.47	317.22	-5.25
	White	372	365.82	-6.18

## Attachment 7: TerraNova Reading Performance by Quartiles

2008-09 TerraNova Reading Quartiles for Alaska Native/American Indian, White and All Students

Alaska Native/American Indian		Reading							
		4th Quartile		3rd Quartile		2nd Quartile		1st Quartile	
		N	%	N	%	N	%	N	%
GRADE	5	78	12.77%	120	19.64%	157	25.70%	256	41.90%
	7	108	17.65%	184	30.07%	210	34.31%	110	17.97%

White		Reading							
		4th Quartile		4th Quartile		3rd Quartile		2nd Quartile	
		N	N	%	N	%	N	%	N
GRADE	5	606	36.46%	469	28.22%	345	20.76%	242	14.56%
	7	723	42.33%	584	34.19%	287	16.80%	114	6.67%

All Students		Reading							
		4th Quartile		4th Quartile		3rd Quartile		2nd Quartile	
		N	N	%	N	%	N	%	N
GRADE	5	872	24.98%	857	24.55%	829	23.75%	933	26.73%
	7	1,057	30.43%	1,104	31.79%	839	24.16%	473	13.62%

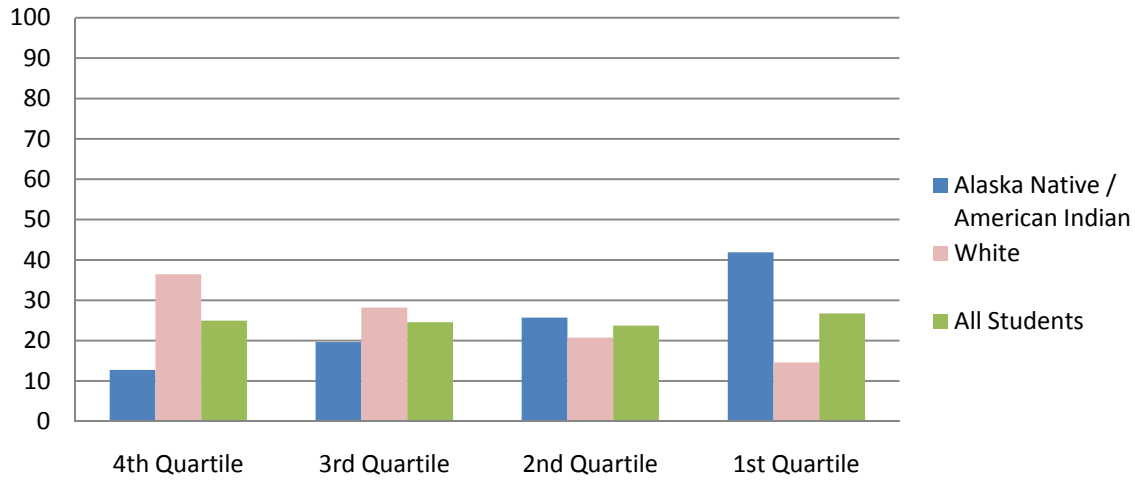
2007-08 TerraNova Reading Quartiles for Alaska Native/American Indian, White and All Students

Alaska Native/American Indian		Reading							
		4th Quartile		3rd Quartile		2nd Quartile		1st Quartile	
		N	%	N	%	N	%	N	%
GRADE	5	72	11.96%	97	16.11%	166	27.57%	267	44.35%
	7	87	16.38%	183	34.46%	164	30.89%	97	18.27%

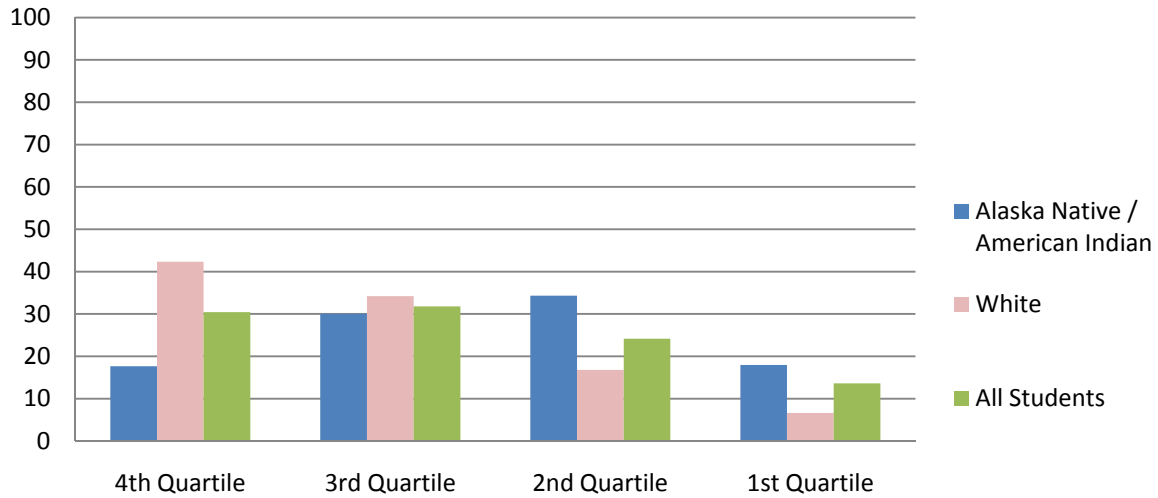
White		Reading							
		4th Quartile		3rd Quartile		2nd Quartile		1st Quartile	
		N	%	N	%	N	%	N	%
GRADE	5	614	35.82%	487	28.41%	360	21.00%	253	14.76%
	7	748	41.37%	616	34.07%	320	17.70%	124	6.86%

All Students		Reading							
		4th Quartile		3rd Quartile		2nd Quartile		1st Quartile	
		N	%	N	%	N	%	N	%
GRADE	5	883	25.65%	829	24.08%	817	23.73%	914	26.55%
	7	1,051	30.31%	1,127	32.50%	851	24.54%	439	12.66%

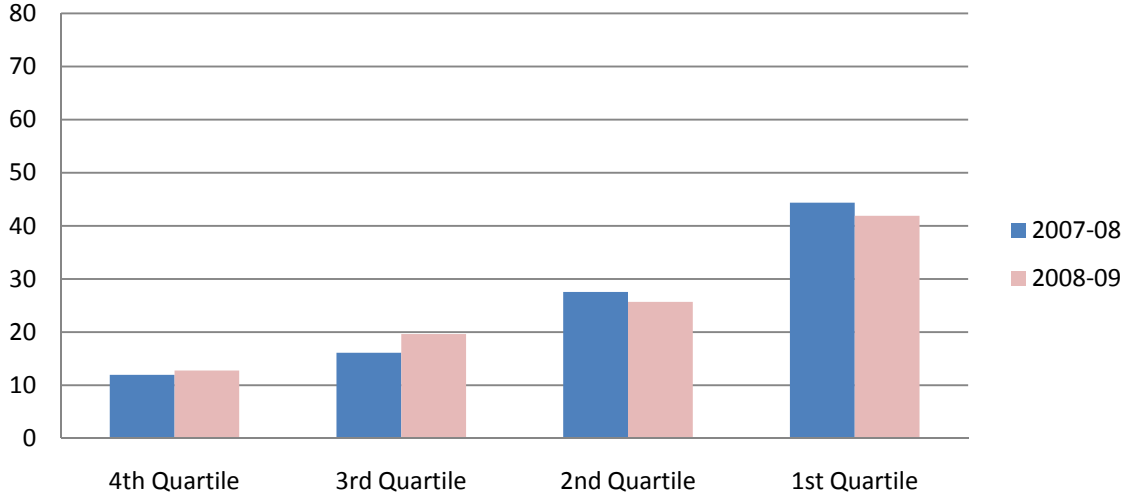
### 2008-09 Grade 5 TerraNova Reading Quartiles by Race/Ethnicity



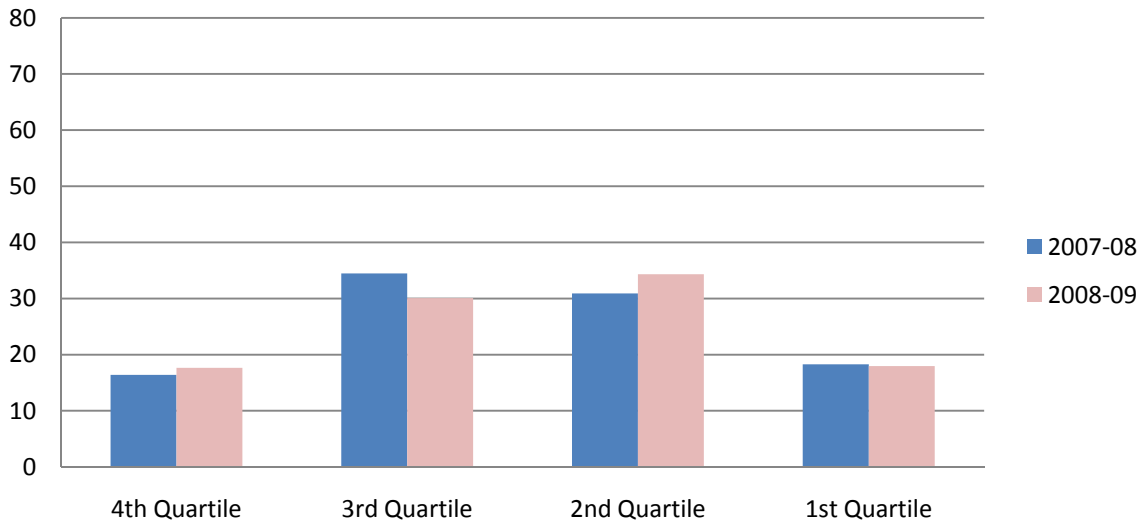
### 2008-09 Grade 7 TerraNova Reading Quartiles by Race/Ethnicity



**Comparison of 2007-08 and 2008-09 Grade 5 TerraNova Reading Quartiles for Alaska Native/American Indian Students**



**Comparison of 2007-08 and 2008-09 Grade 7 TerraNova Reading Quartiles for Alaska Native/American Indian Students**



2008-09 TerraNova Reading Quartile Levels for Alaska Native/American Indian, White and All Students

Alaska Native/American Indian		Reading					
		Above Average		Average		Below Average	
		N	%	N	%	N	%
GRADE	5	78	12.77%	277	45.34%	256	41.90%
	7	108	17.65%	394	64.38%	110	17.97%

White		Reading					
		Above Average		Average		Below Average	
		N	%	N	%	N	%
GRADE	5	606	36.46%	814	48.98%	242	14.56%
	7	723	42.33%	871	51.00%	114	6.67%

All Students		Reading					
		Above Average		Average		Below Average	
		N	%	N	%	N	%
GRADE	5	872	24.98%	1,686	48.30%	933	26.73%
	7	1,057	30.43%	1,943	55.95%	473	13.62%

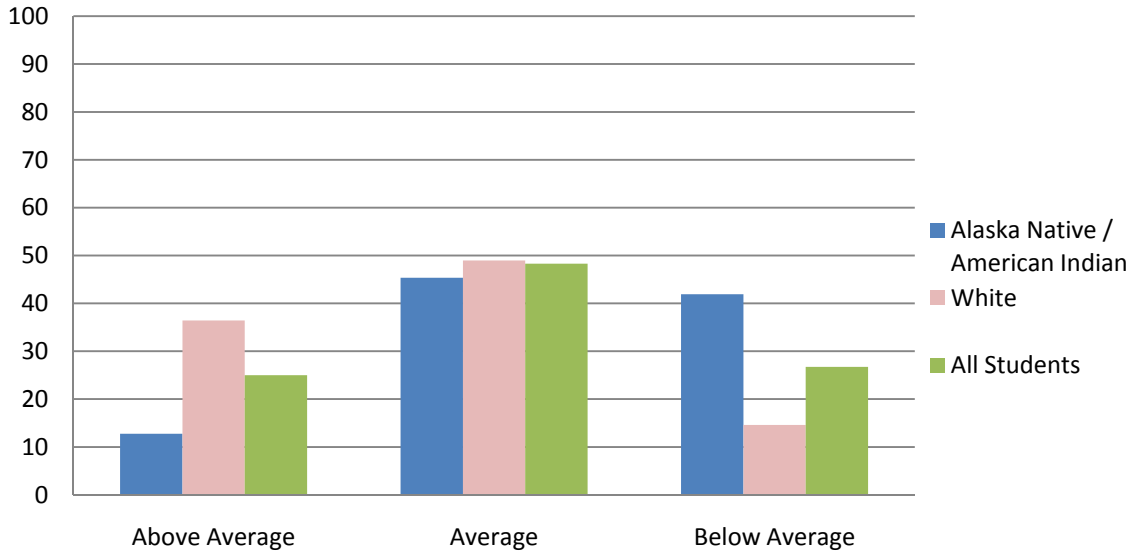
2007-08 TerraNova Reading Quartile Levels for Alaska Native/American Indian, White and All Students

Alaska Native/American Indian		Reading					
		Above Average		Average		Below Average	
		N	%	N	%	N	%
GRADE	5	72	11.96%	263	43.69%	267	44.35%
	7	87	16.38%	347	65.35%	97	18.27%

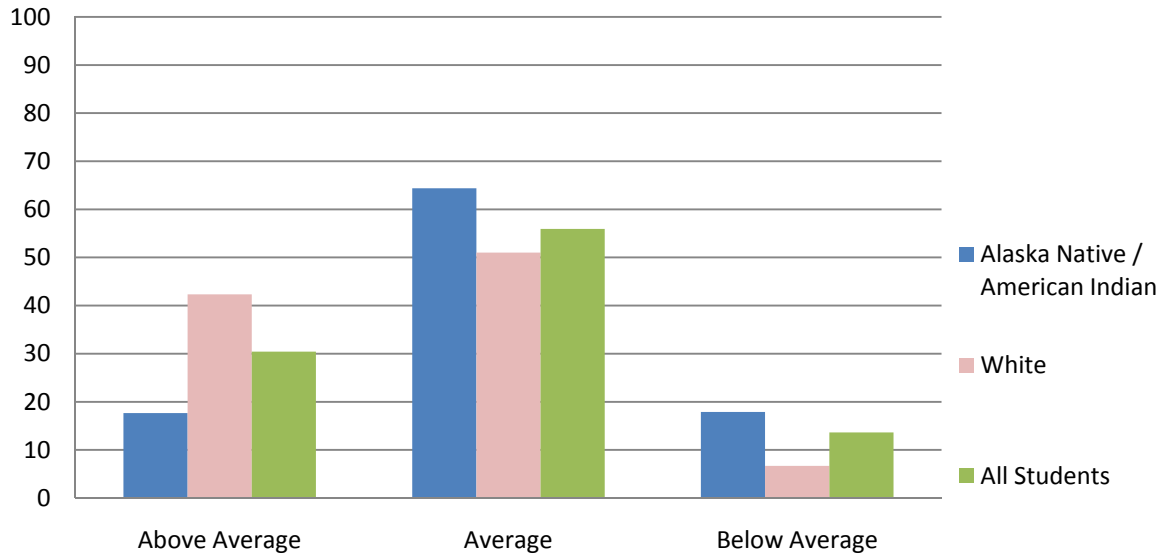
White		Reading					
		Above Average		Average		Below Average	
		N	%	N	%	N	%
GRADE	5	614	35.82%	847	49.42%	253	14.76%
	7	748	41.37%	936	51.77%	124	6.86%

All Students		Reading					
		Above Average		Average		Below Average	
		N	%	N	%	N	%
GRADE	5	883	25.65%	1,646	47.81%	914	26.55%
	7	1,051	30.31%	1,978	57.04%	439	12.66%

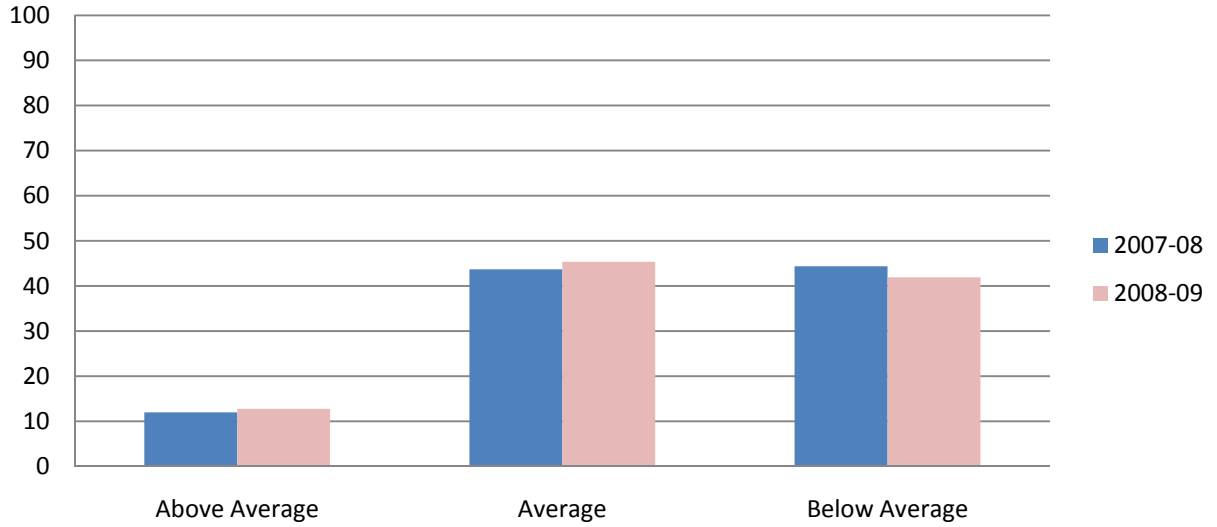
### 2008-09 Grade 5 TerraNova Reading Quartile Levels by Race/Ethnicity



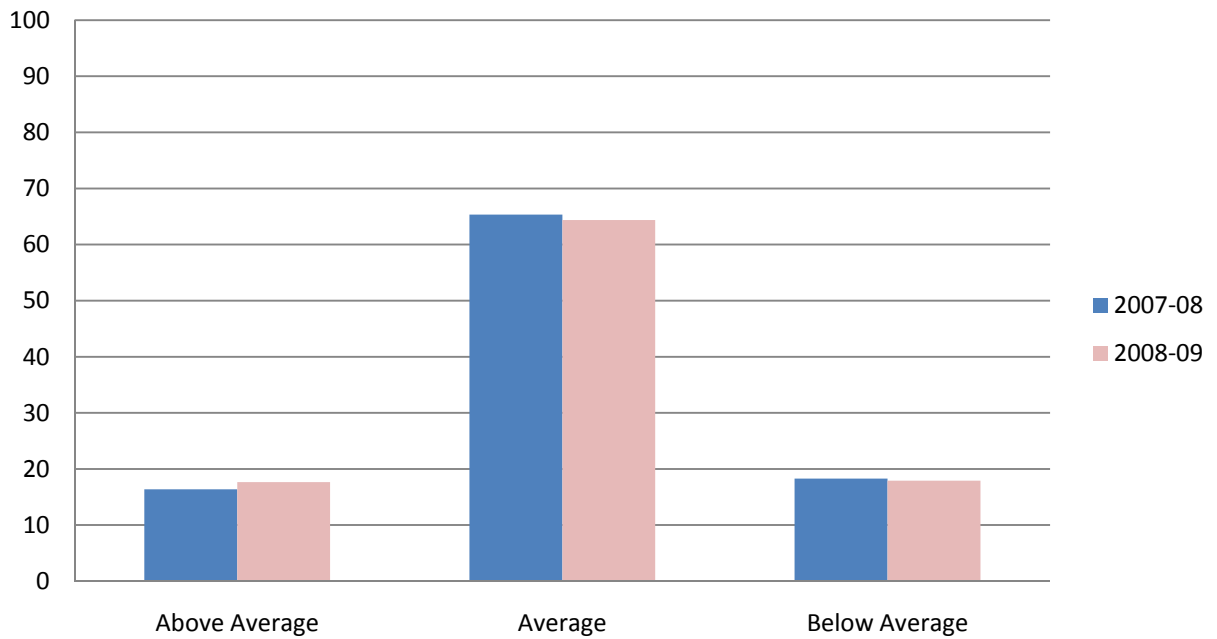
### 2008-09 Grade 7 TerraNova Reading Quartile Levels by Race/Ethnicity



### Comparison of 2007-08 and 2008-09 Grade 5 TerraNova Reading Quartile Levels for Alaska Native/American Indian Students



### Comparison of 2007-08 and 2008-09 Grade 7 TerraNova Reading Quartile Levels for Alaska Native/American Indian Students



## Attachment 8: TerraNova Language Performance by Quartiles

2008-09 TerraNova Language Quartiles for Alaska Native/American Indian, White and All Students

Alaska Native/American Indian		Language							
		4th Quartile		3rd Quartile		2nd Quartile		1st Quartile	
		N	%	N	%	N	%	N	%
GRADE	5	79	12.97%	145	23.81%	159	26.11%	226	37.11%
	7	107	17.46%	169	27.57%	192	31.32%	145	23.65%

White		Language							
		4th Quartile		3rd Quartile		2nd Quartile		1st Quartile	
		N	%	N	%	N	%	N	%
GRADE	5	603	36.30%	521	31.37%	329	19.81%	208	12.52%
	7	703	41.09%	535	31.27%	320	18.70%	153	8.94%

All Students		Language							
		4th Quartile		3rd Quartile		2nd Quartile		1st Quartile	
		N	%	N	%	N	%	N	%
GRADE	5	876	25.10%	969	27.77%	848	24.30%	797	22.84%
	7	1,046	30.07%	1,013	29.12%	863	24.81%	557	16.01%

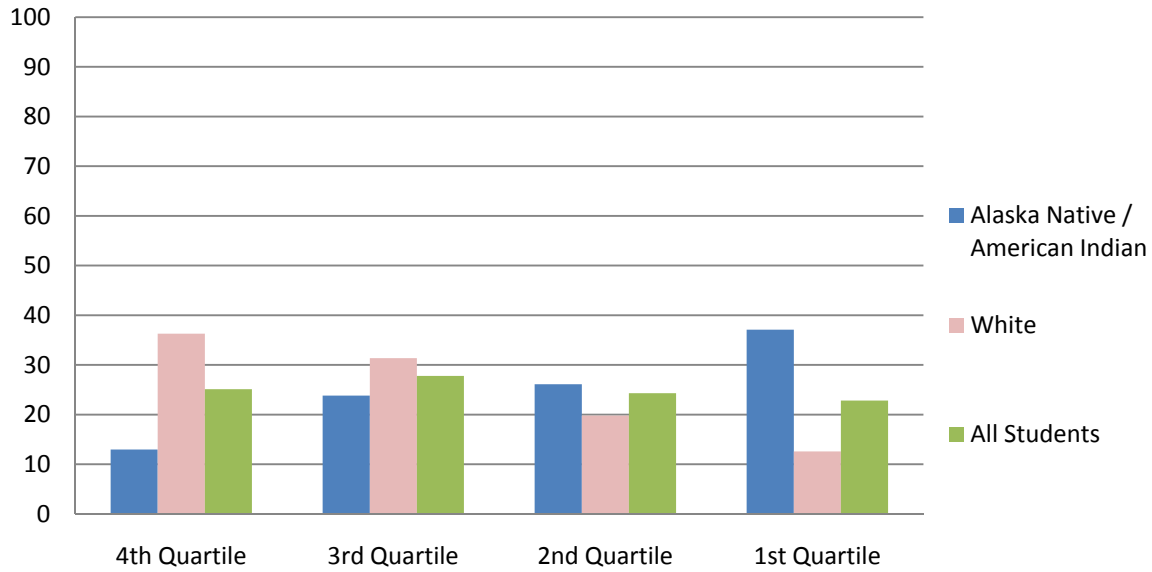
2007-08 TerraNova Language Quartiles for Alaska Native/American Indian, White and All Students

Alaska Native/American Indian		Language							
		4th Quartile		3rd Quartile		2nd Quartile		1st Quartile	
		N	%	N	%	N	%	N	%
GRADE	5	81	13.52%	131	21.87%	163	27.21%	224	37.40%
	7	87	16.05%	158	29.15%	171	31.55%	126	23.25%

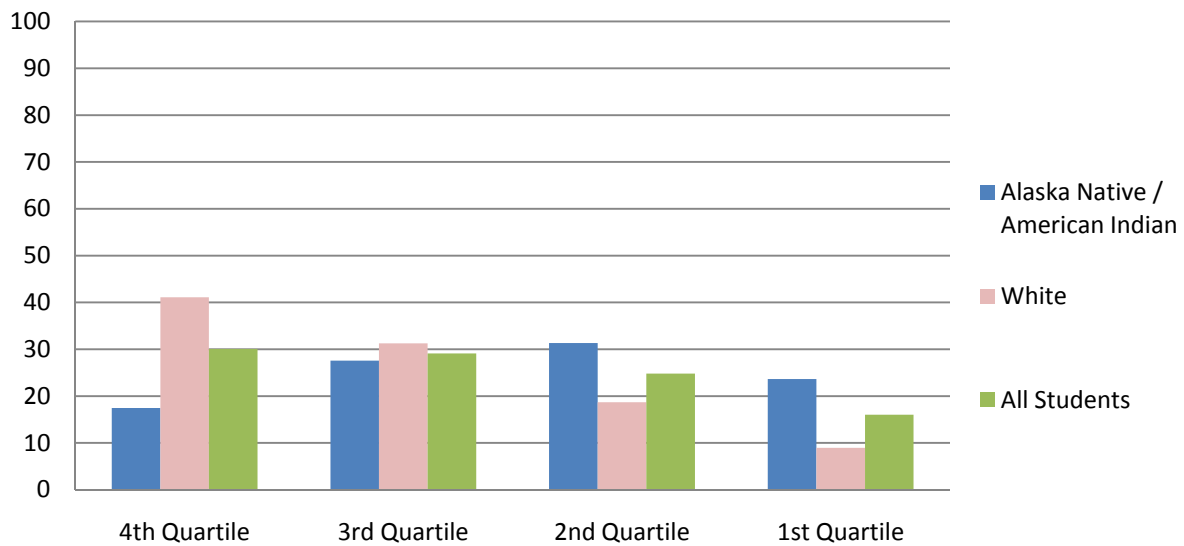
White		Language							
		4th Quartile		3rd Quartile		2nd Quartile		1st Quartile	
		N	%	N	%	N	%	N	%
GRADE	5	628	36.64%	528	30.81%	342	19.95%	216	12.60%
	7	746	40.85%	551	30.18%	368	20.15%	161	8.82%

All Students		Language							
		4th Quartile		3rd Quartile		2nd Quartile		1st Quartile	
		N	%	N	%	N	%	N	%
GRADE	5	923	26.79%	937	27.20%	831	24.12%	754	21.89%
	7	1,063	30.26%	1,027	29.23%	881	25.08%	542	15.43%

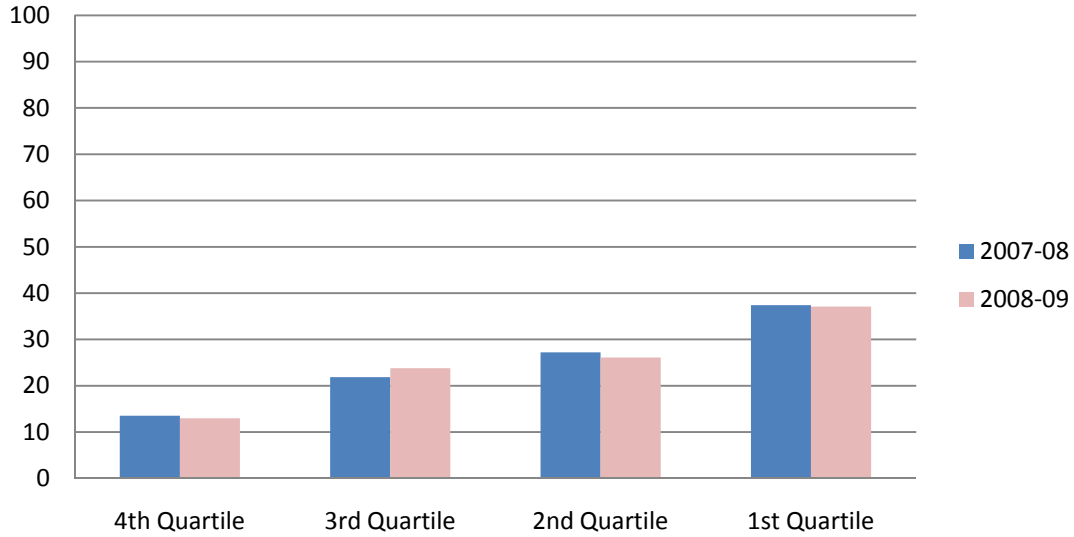
## 2008-09 Grade 5 TerraNova Language Quartiles by Race/Ethnicity



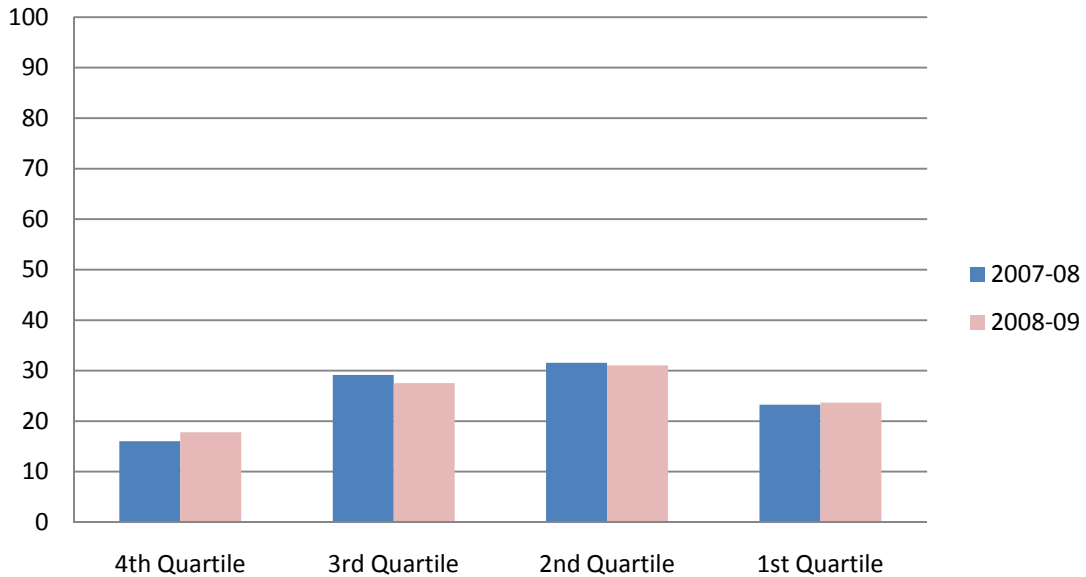
## 2008-09 Grade 7 TerraNova Language Quartiles by Race/Ethnicity



**Comparison of 2007-08 and 2008-09 Grade 5 TerraNova Language Quartiles for Alaska Native/American Indian Students**



**Comparison of 2007-08 and 2008-09 Grade 7 TerraNova Language Quartiles for Alaska Native/American Indian Students**



2008-09 TerraNova Language Quartile Levels for Alaska Native/American Indian, White and All Students

Alaska Native/American Indian		Language					
		Above Average		Average		Below Average	
		N	%	N	%	N	%
GRADE	5	79	12.97%	304	49.92%	226	37.11%
	7	107	17.46%	361	58.89%	145	23.65%

White		Language					
		Above Average		Average		Below Average	
		N	%	N	%	N	%
GRADE	5	603	36.30%	850	51.17%	208	12.52%
	7	703	41.09%	855	49.97%	153	8.94%

All Students		Language					
		Above Average		Average		Below Average	
		N	%	N	%	N	%
GRADE	5	876	25.10%	1,817	52.06%	797	22.84%
	7	1,046	30.07%	1,876	53.92%	557	16.01%

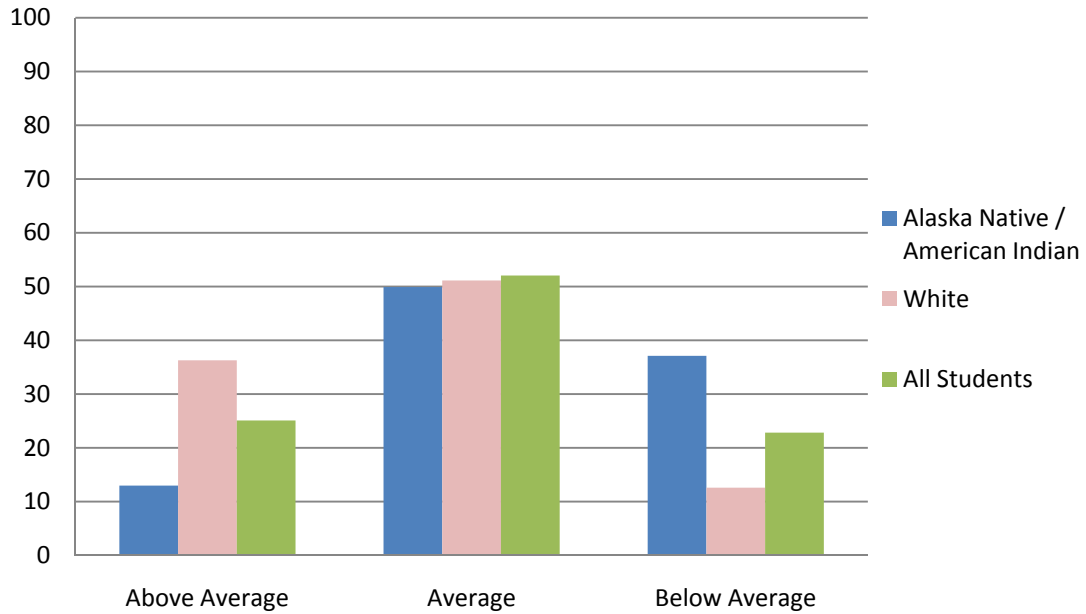
2007-08 TerraNova Language Quartile Levels for Alaska Native/American Indian, White and All Students

Alaska Native/American Indian		Language					
		Above Average		Average		Below Average	
		N	%	N	%	N	%
GRADE	5	81	13.52%	294	49.08%	224	37.40%
	7	87	16.05%	329	60.70%	126	23.25%

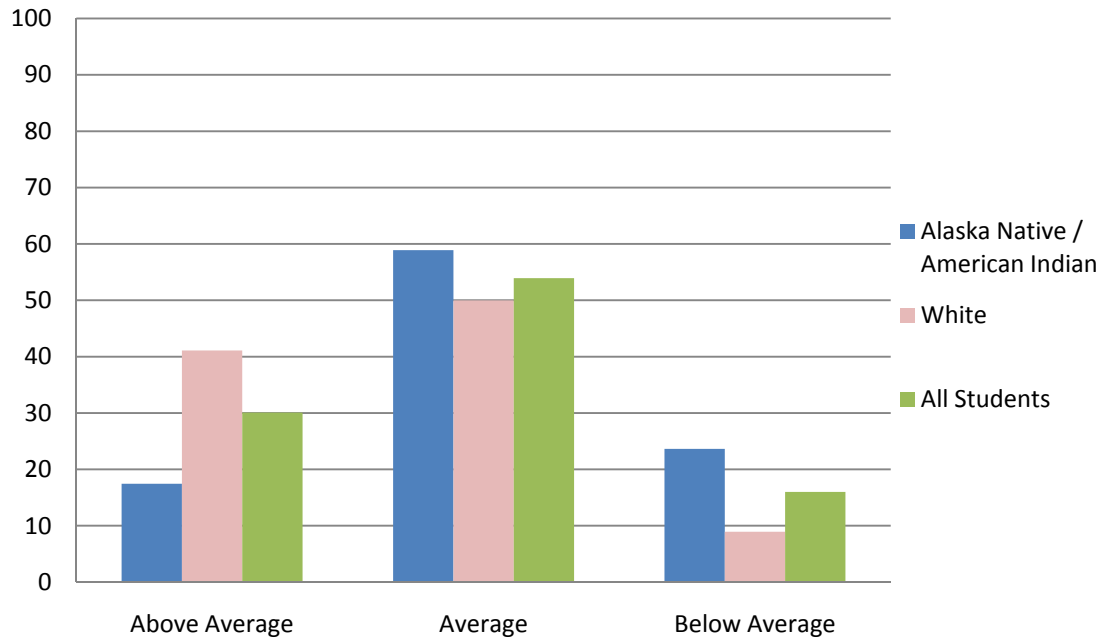
White		Language					
		Above Average		Average		Below Average	
		N	%	N	%	N	%
GRADE	5	628	36.64%	870	50.76%	216	12.60%
	7	746	40.85%	919	50.33%	161	8.82%

All Students		Language					
		Above Average		Average		Below Average	
		N	%	N	%	N	%
GRADE	5	923	26.79%	1,768	51.32%	754	21.89%
	7	1,063	30.26%	1,908	54.31%	542	15.43%

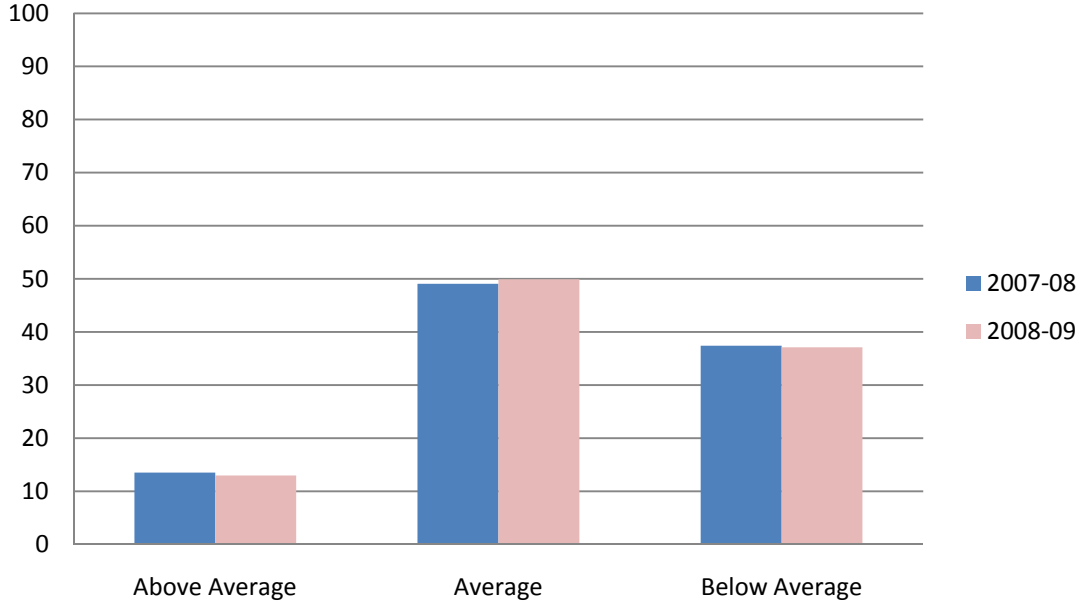
### 2008-09 Grade 5 TerraNova Language Quartile Levels by Race/Ethnicity



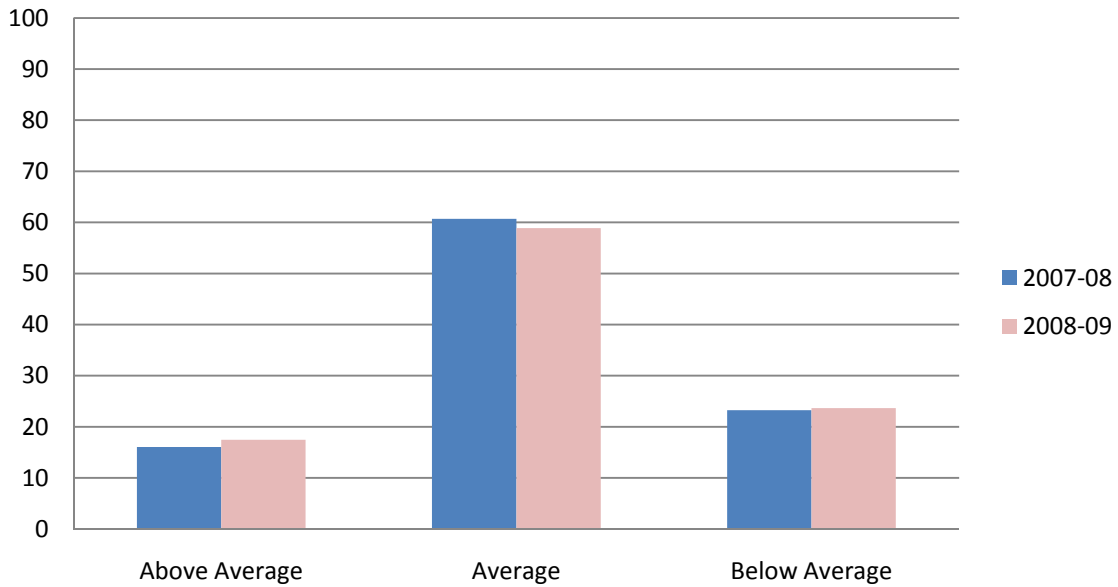
### 2008-09 Grade 7 TerraNova Language Quartile Levels by Race/Ethnicity



**Comparison of 2007-08 and 2008-09 Grade 5 TerraNova Language Quartile Levels for Alaska Native/American Indian Students**



**Comparison of 2007-08 and 2008-09 Grade 7 TerraNova Language Quartile Levels for Alaska Native/American Indian Students**



## Attachment 9: TerraNova Mathematics Performance by Quartiles

2008-09 TerraNova Mathematics Quartiles for Alaska Native/American Indian, White and All Students

Alaska Native/American Indian		Mathematics							
		4th Quartile		3rd Quartile		2nd Quartile		1st Quartile	
		N	%	N	%	N	%	N	%
GRADE	5	73	11.93%	149	24.35%	166	27.12%	224	36.60%
	7	123	20.03%	155	25.24%	170	27.69%	166	27.04%

White		Mathematics							
		4th Quartile		3rd Quartile		2nd Quartile		1st Quartile	
		N	%	N	%	N	%	N	%
GRADE	5	533	32.03%	536	32.21%	359	21.57%	236	14.18%
	7	712	41.56%	472	27.55%	351	20.49%	178	10.39%

All Students		Mathematics							
		4th Quartile		3rd Quartile		2nd Quartile		1st Quartile	
		N	%	N	%	N	%	N	%
GRADE	5	793	22.68%	982	28.08%	861	24.62%	861	24.62%
	7	1,105	31.67%	915	26.23%	857	24.56%	612	17.54%

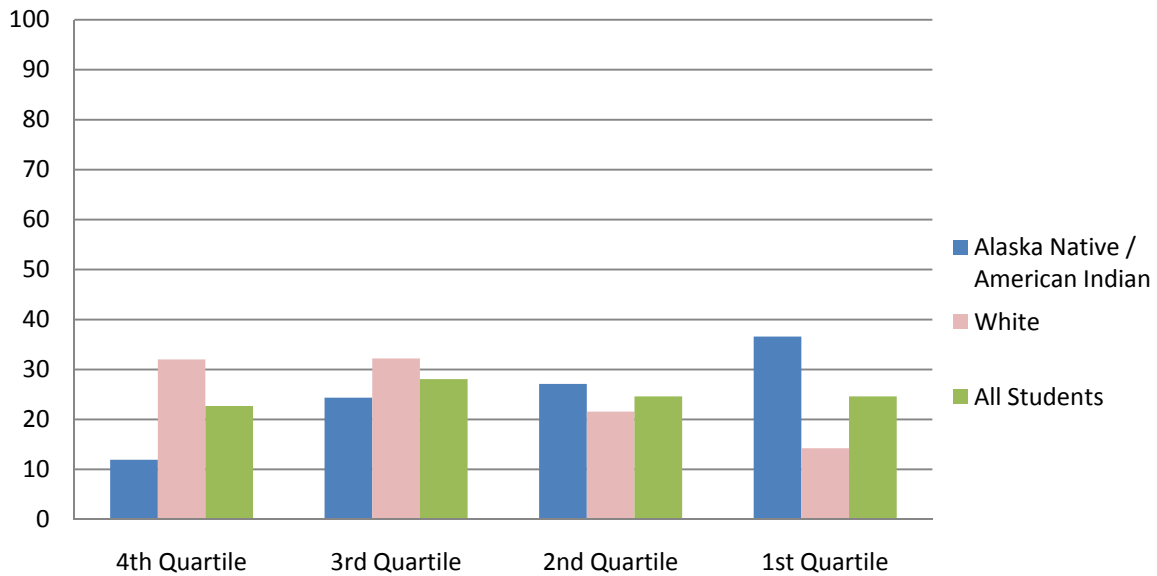
2007-08 TerraNova Mathematics Quartiles for Alaska Native/American Indian, White and All Students

Alaska Native/American Indian		Mathematics							
		4th Quartile		3rd Quartile		2nd Quartile		1st Quartile	
		N	%	N	%	N	%	N	%
GRADE	5	72	11.90%	132	21.82%	170	28.10%	231	38.18%
	7	107	19.85%	143	26.53%	159	29.50%	130	24.12%

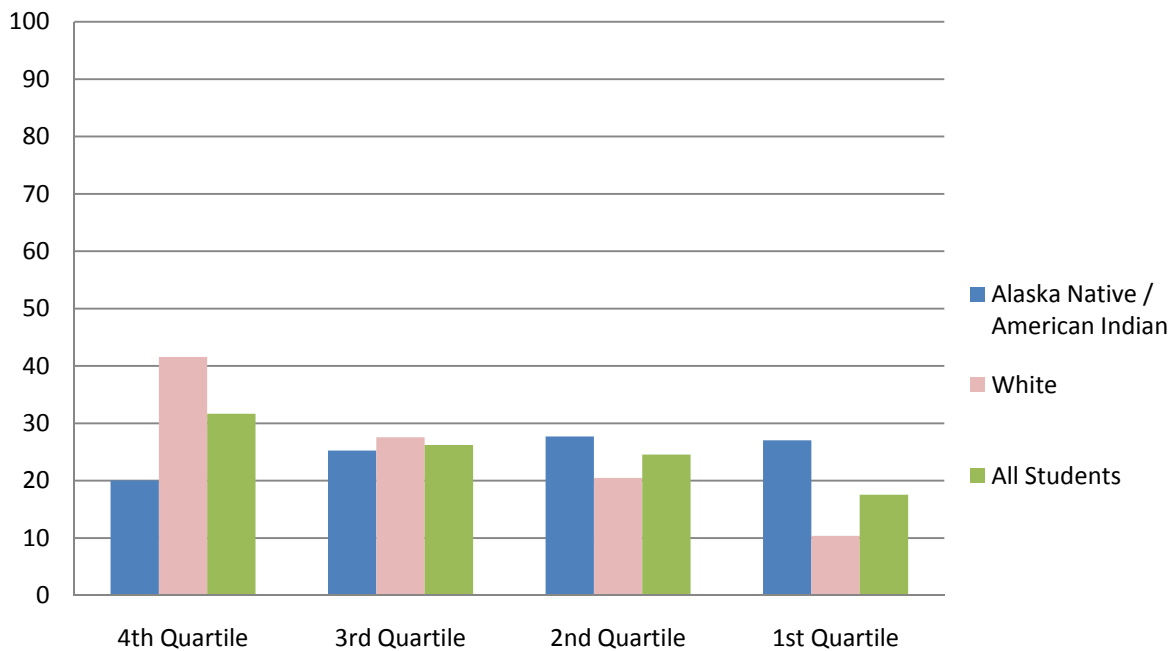
White		Mathematics							
		4th Quartile		3rd Quartile		2nd Quartile		1st Quartile	
		N	%	N	%	N	%	N	%
GRADE	5	591	34.44%	514	29.95%	385	22.44%	226	13.17%
	7	769	42.28%	494	27.16%	370	20.34%	186	10.23%

All Students		Mathematics							
		4th Quartile		3rd Quartile		2nd Quartile		1st Quartile	
		N	%	N	%	N	%	N	%
GRADE	5	880	25.45%	913	26.40%	846	24.47%	819	23.68%
	7	1,134	32.27%	942	26.81%	849	24.16%	589	16.76%

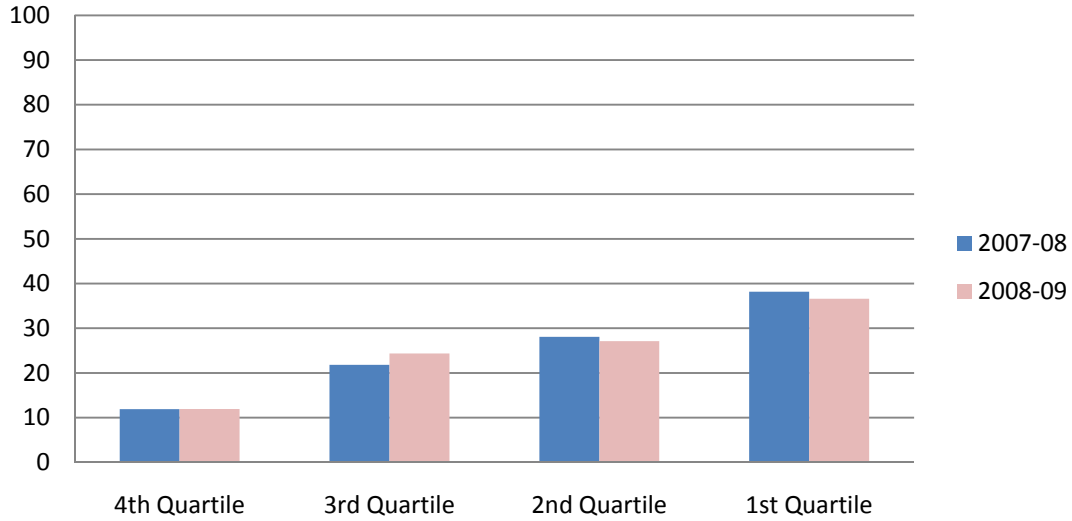
### 2008-09 Grade 5 TerraNova Math Quartiles by Race/Ethnicity



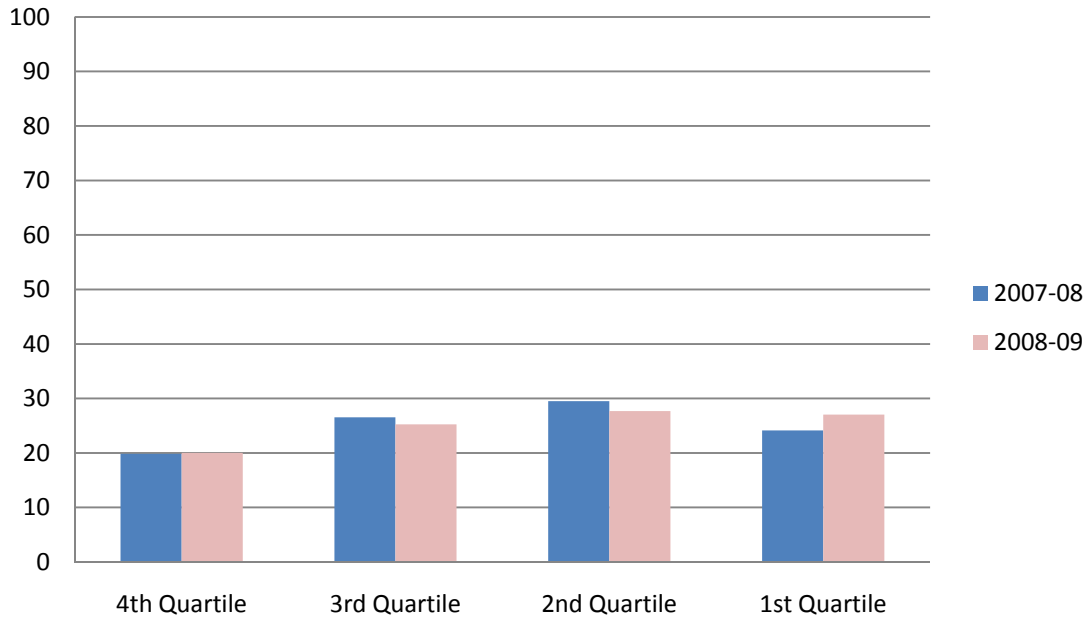
### 2008-09 Grade 7 TerraNova Math Quartiles by Race/Ethnicity



**Comparison of 2007-08 and 2008-09 Grade 5 TerraNova  
Math Quartiles for Alaska Native/American Indian  
Students**



**Comparison of 2007-08 and 2008-09 Grade 7 TerraNova  
Math Quartiles for Alaska Native/American Indian  
Students**



2008-09 TerraNova Mathematics Quartile Levels for Alaska Native/American Indian, White and All Students

Alaska Native/American Indian		Mathematics					
		Above Average		Average		Below Average	
		N	%	N	%	N	%
GRADE	5	73	11.93%	315	51.47%	224	36.60%
	7	123	20.03%	325	52.93%	166	27.04%

White		Mathematics					
		Above Average		Average		Below Average	
		N	%	N	%	N	%
GRADE	5	533	32.03%	895	53.79%	236	14.18%
	7	712	41.56%	823	48.04%	178	10.39%

All Students		Mathematics					
		Above Average		Average		Below Average	
		N	%	N	%	N	%
GRADE	5	793	22.68%	1843	52.70%	861	24.62%
	7	1105	31.67%	1772	50.79%	612	17.54%

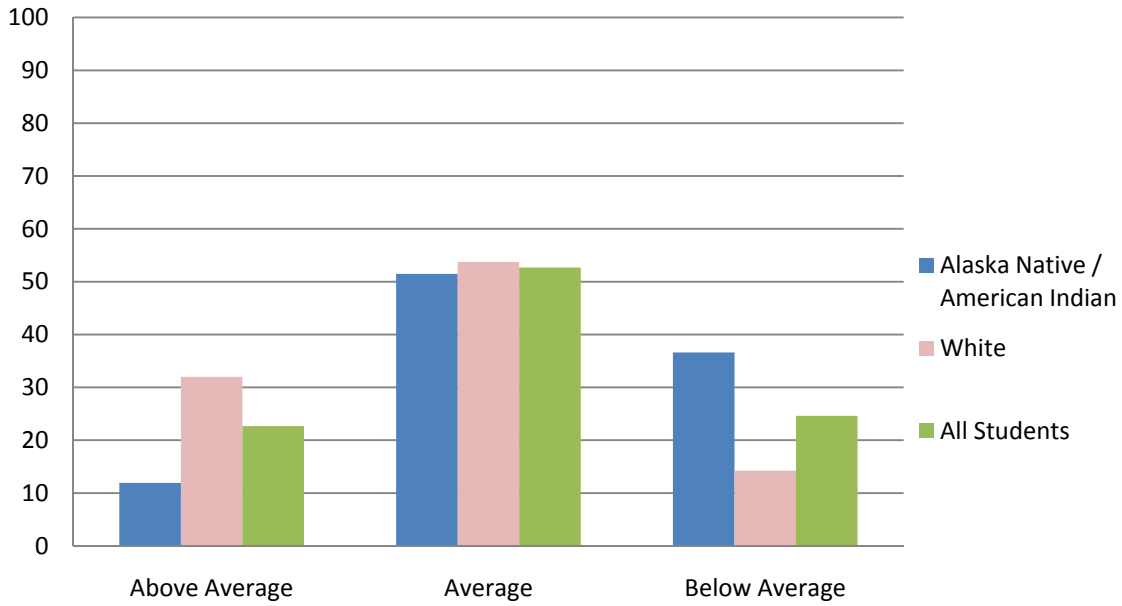
2007-08 TerraNova Mathematics Quartile Levels for Alaska Native/American Indian, White and All Students

Alaska Native/American Indian		Mathematics					
		Above Average		Average		Below Average	
		N	%	N	%	N	%
GRADE	5	72	11.90%	302	49.92%	231	38.18%
	7	107	19.85%	302	56.03%	130	24.12%

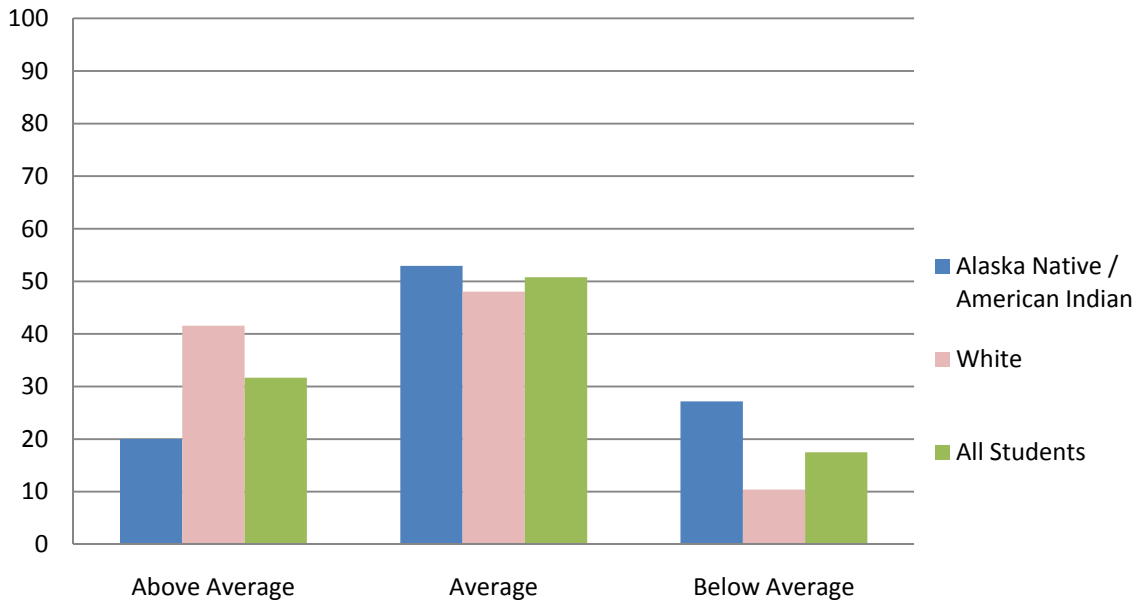
White		Mathematics					
		Above Average		Average		Below Average	
		N	%	N	%	N	%
GRADE	5	591	34.44%	899	52.39%	226	13.17%
	7	769	42.28%	864	47.50%	186	10.23%

All Students		Mathematics					
		Above Average		Average		Below Average	
		N	%	N	%	N	%
GRADE	5	793	22.68%	1,843	52.70%	861	24.62%
	7	1,105	31.67%	1,772	50.79%	612	17.54%

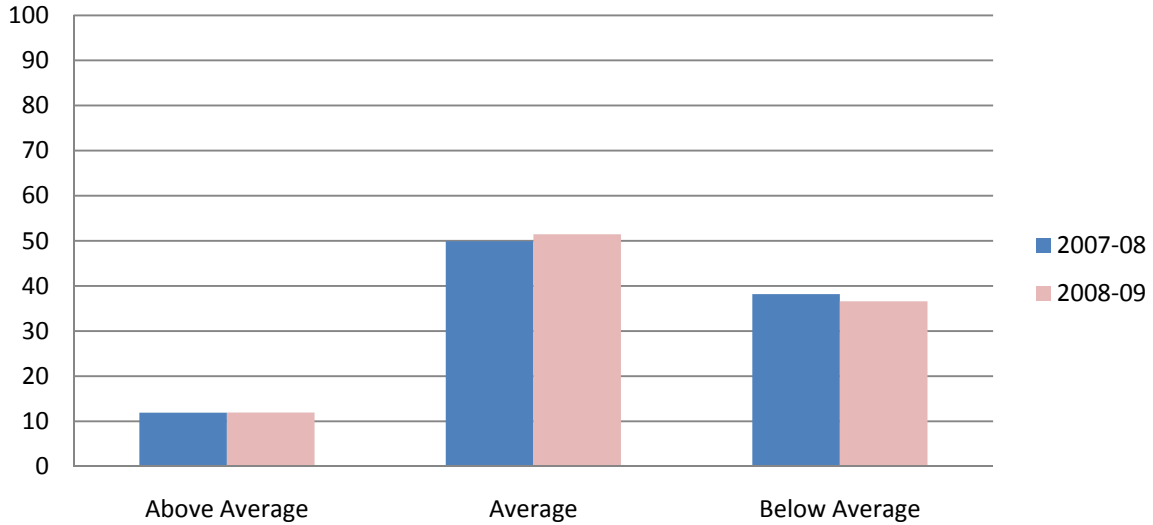
### 2008-09 Grade 5 TerraNova Math Quartile Levels by Race/Ethnicity



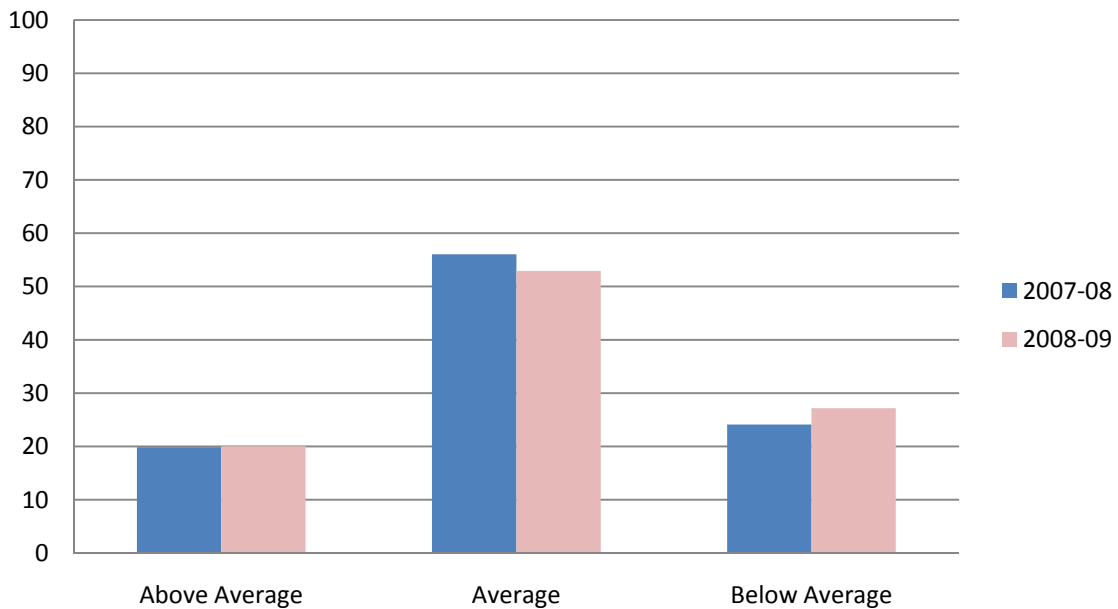
### 2008-09 Grade 7 TerraNova Language Quartile Levels by Race/Ethnicity



**Comparison of 2007-08 and 2008-09 Grade 5 TerraNova Math Quartile Levels for Alaska Native/American Indian Students**



**Comparison of 2007-08 and 2008-09 Grade 7 TerraNova Math Quartile Levels for Alaska Native/American Indian Students**



### Attachment 10: TerraNova NCE Mean Score

2008-09 TerraNova mean NCE Scores for Alaska Native/American Indian, White and All Students

Alaska Native/American Indian		NCE Reading		NCE Language		NCE Mathematics	
		N	Mean NCE	N	Mean NCE	N	Mean NCE
Grade	5	606	41.9	606	43.2	606	42.7
	7	605	49.7	605	48.3	605	48.2

White		NCE Reading		NCE Language		NCE Mathematics	
		N	Mean NCE	N	Mean NCE	N	Mean NCE
Grade	5	1,659	57.1	1,659	57.4	1,659	56.1
	7	1,700	61.8	1,700	60.4	1,700	59.6

All Students		NCE Reading		NCE Language		NCE Mathematics	
		N	Mean NCE	N	Mean NCE	N	Mean NCE
Grade	5	3,480	50.0	3,480	50.8	3,480	49.9
	7	3,452	55.8	3,452	54.6	3,452	54.3

2007-08 TerraNova mean NCE Scores for Alaska Native/American Indian, White and All Students

Alaska Native/American Indian		NCE Reading		NCE Language		NCE Mathematics	
		N	Mean NCE	N	Mean NCE	N	Mean NCE
Grade	5	601	41.1	601	43.2	601	42.9
	7	522	49.9	522	48.1	522	48.6

White		NCE Reading		NCE Language		NCE Mathematics	
		N	Mean NCE	N	Mean NCE	N	Mean NCE
Grade	5	1,713	56.9	1,713	57.4	1,713	56.4
	7	1,789	61.3	1,789	60.1	1,789	59.7

All Students		NCE Reading		NCE Language		NCE Mathematics	
		N	Mean NCE	N	Mean NCE	N	Mean NCE
Grade	5	3,443	50.4	3,445	51.5	3,458	50.7
	7	3,468	55.9	3,513	54.9	3,514	54.5

### Attachment 11: HSGQE Reading Performance

**2008-09 HSGQE Reading Proficiency for Alaska Native/American Indian, White and All Students**

		Reading			
		Not Proficient		Proficient	
		N	%	N	%
Alaska Native/American Indian					
GRADE	10	109	21.17%	406	78.83%

		Reading			
		Not Proficient		Proficient	
		N	%	N	%
White					
GRADE	10	167	8.81%	1,729	91.19%

		Reading			
		Not Proficient		Proficient	
		N	%	N	%
All Students					
GRADE	10	483	13.46%	3,106	86.54%

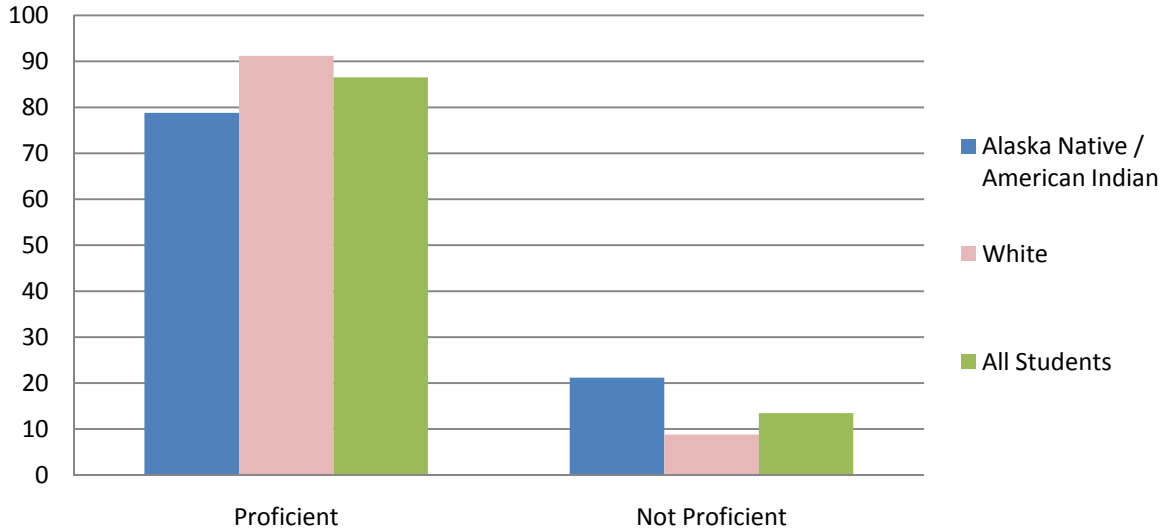
**2007-08 HSGQE Reading Proficiency for Alaska Native/American Indian, White and All Students**

		Reading			
		Not Proficient		Proficient	
		N	%	N	%
Alaska Native/American Indian					
GRADE	10	151	27.40%	400	72.60%

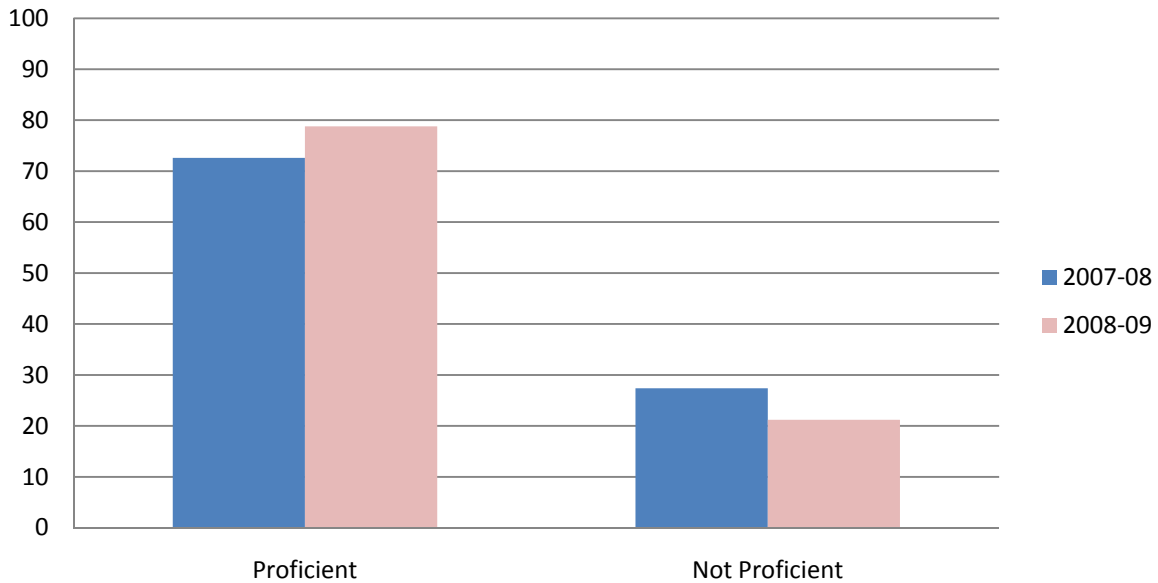
		Reading			
		Not Proficient		Proficient	
		N	%	N	%
White					
GRADE	10	204	10.23%	1,790	89.77%

		Reading			
		Not Proficient		Proficient	
		N	%	N	%
All Students					
GRADE	10	622	17.10%	3,015	82.90%

### 2008-09 HSGQE Reading Proficiency for Grade 10 by Race/Ethnicity



### Comparison of 2007-08 and 2008-09 HSGQE Reading Proficiency for Grade 10 Alaska Native/American Indian Students



### Attachment 12: HSGQE Writing Performance

<b>2008-09 HSGQE Writing Proficiency for Alaska Native/American Indian, White and All Students</b>					
--	--	--	--	--	--

		Writing			
		Not Proficient		Proficient	
		N	%	N	%
Alaska Native/American Indian					
GRADE	10	213	41.36%	302	58.64%

		Writing			
		Not Proficient		Proficient	
		N	%	N	%
White					
GRADE	10	308	16.24%	1,588	83.76%

		Writing			
		Not Proficient		Proficient	
		N	%	N	%
All Students					
GRADE	10	858	23.91%	2,731	76.09%

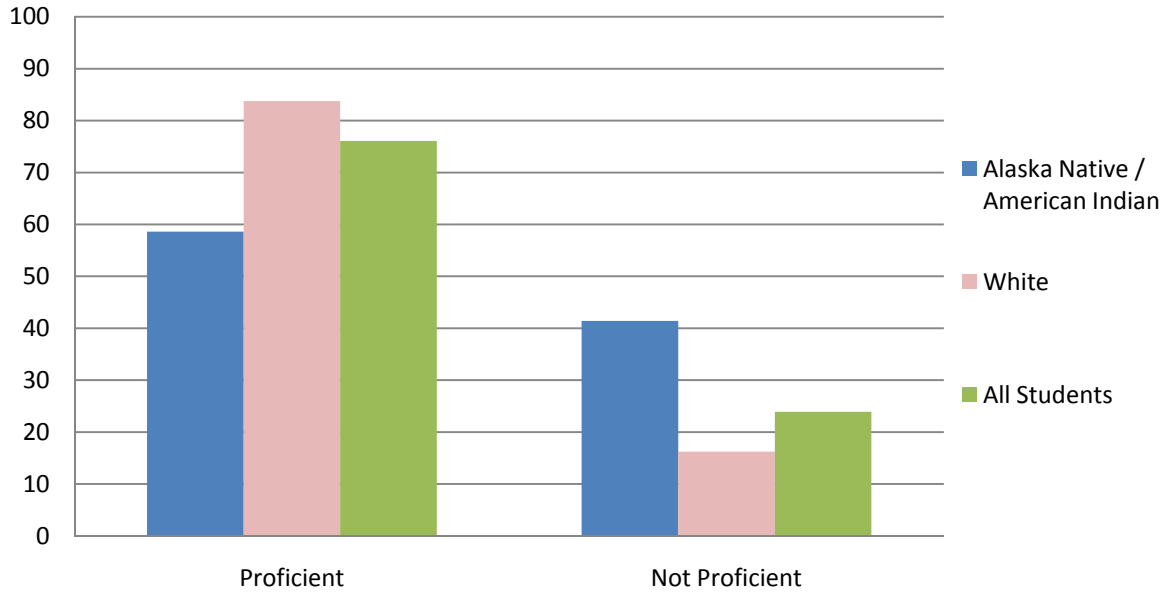
<b>2007-08 HSGQE Writing Proficiency for Alaska Native/American Indian, White and All Students</b>					
--	--	--	--	--	--

		Writing			
		Not Proficient		Proficient	
		N	%	N	%
Alaska Native/American Indian					
GRADE	10	209	37.93%	342	62.07%

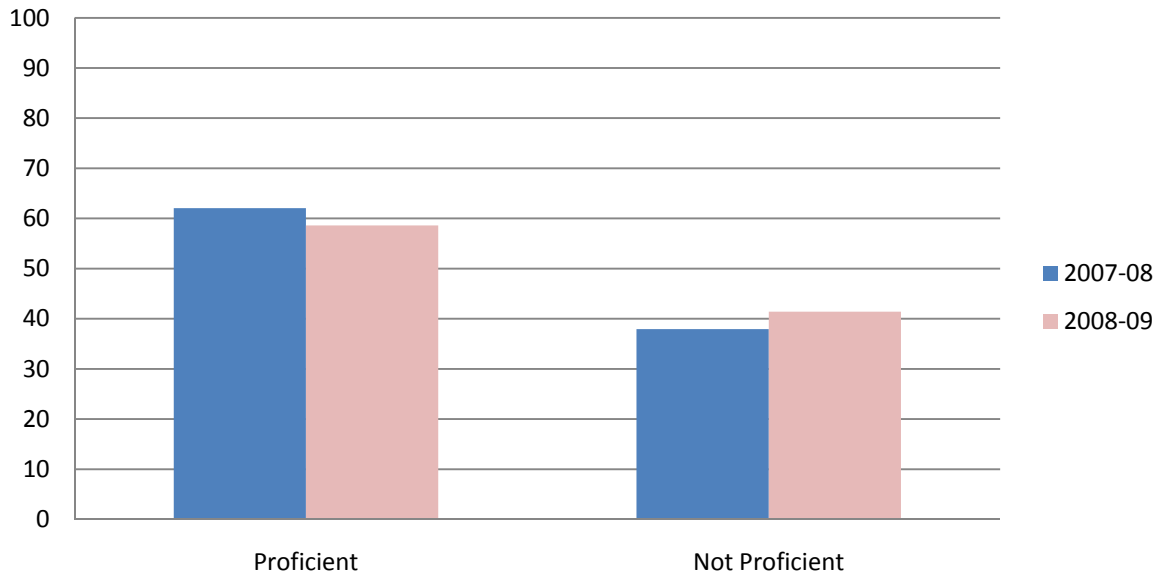
		Writing			
		Not Proficient		Proficient	
		N	%	N	%
White					
GRADE	10	330	16.55%	1,664	83.45%

		Writing			
		Not Proficient		Proficient	
		N	%	N	%
All Students					
GRADE	10	889	24.44%	2,748	75.56%

## 2008-09 HSGQE Writing Proficiency for Grade 10 by Race/Ethnicity



## Comparison of 2007-08 and 2008-09 HSGQE Writing Proficiency for Grade 10 Alaska Native/American Indian Students



**Attachment 13: HSGQE Mathematics Performance**

**2008-09 HSGQE Mathematics Proficiency for Alaska Native/American Indian, White and All Students**

		Mathematics			
		Not Proficient		Proficient	
		N	%	N	%
Alaska Native/American Indian					
GRADE	10	178	34.56%	337	65.44%

		Mathematics			
		Not Proficient		Proficient	
		N	%	N	%
White					
GRADE	10	260	13.71%	1,636	86.29%

		Mathematics			
		Not Proficient		Proficient	
		N	%	N	%
All Students					
GRADE	10	787	21.93%	2,802	78.07%

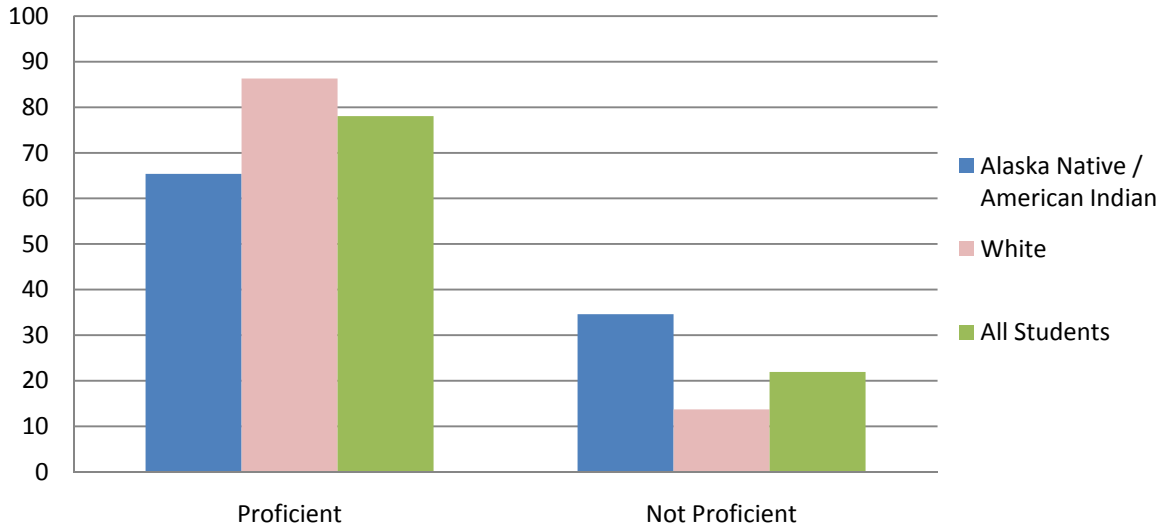
**2007-08 HSGQE Mathematics Proficiency for Alaska Native/American Indian, White and All Students**

		Mathematics			
		Not Proficient		Proficient	
		N	%	N	%
Alaska Native/American Indian					
GRADE	10	196	35.57%	355	64.43%

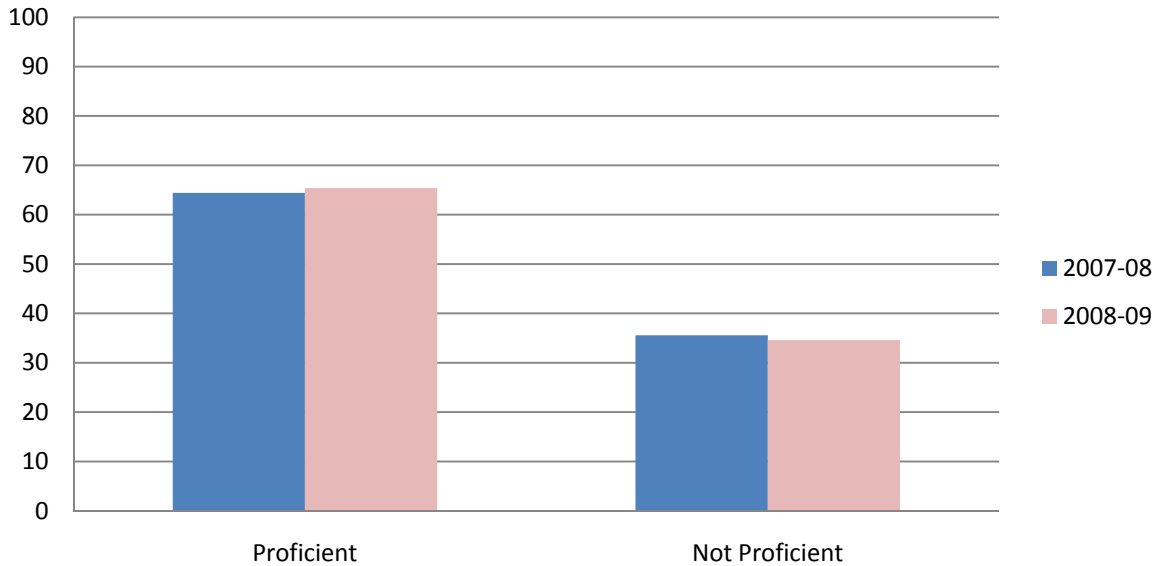
		Mathematics			
		Not Proficient		Proficient	
		N	%	N	%
White					
GRADE	10	299	14.97%	1,698	85.03%

		Mathematics			
		Not Proficient		Proficient	
		N	%	N	%
All Students					
GRADE	10	853	23.45%	2,784	76.55%

### 2008-09 HSGQE Math Proficiency for Grade 10 by Race/Ethnicity



### Comparison of 2007-08 and 2008-09 HSGQE Math Proficiency for Grade 10 Alaska Native/American Indian Students



**Attachment 14: Year-to-Year Comparison of HSGQE Cumulative Results  
Grades 11 and 12 Alaska Native/American Indian Students**

**HSGQE Reading: Alaska Native/American Indian**

Grade	2007-08 % Proficient	2008-09 % Proficient
Grade 11	90.73%	91.84%
Grade 12	91.01%	89.85%

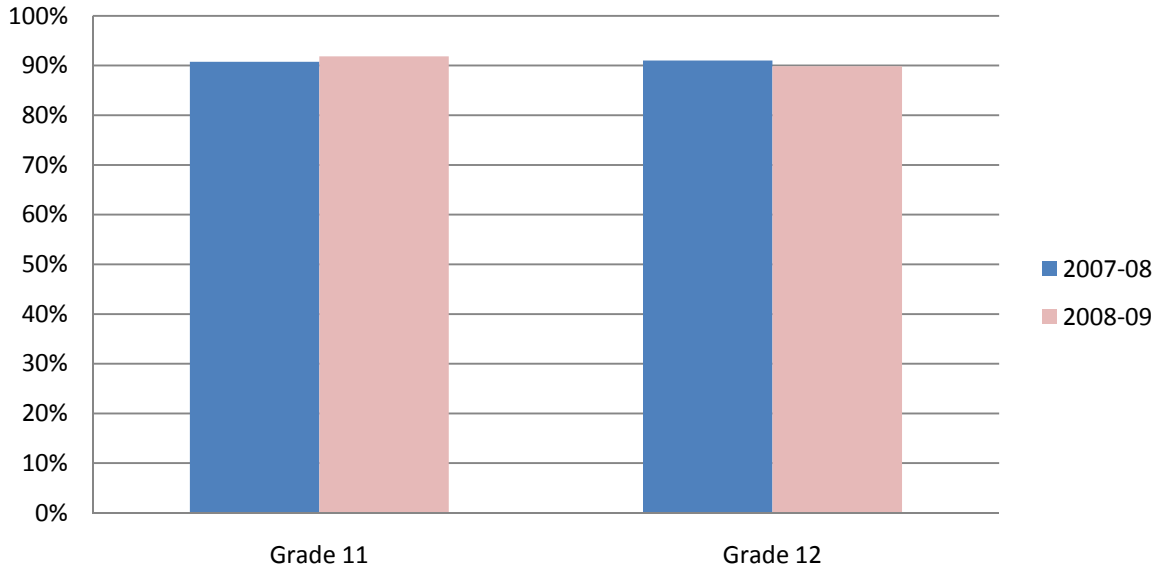
**HSGQE Writing: Alaska Native/American Indian**

Grade	2007-08 % Proficient	2008-09 % Proficient
Grade 11	87.07%	84.10%
Grade 12	89.69%	89.40%

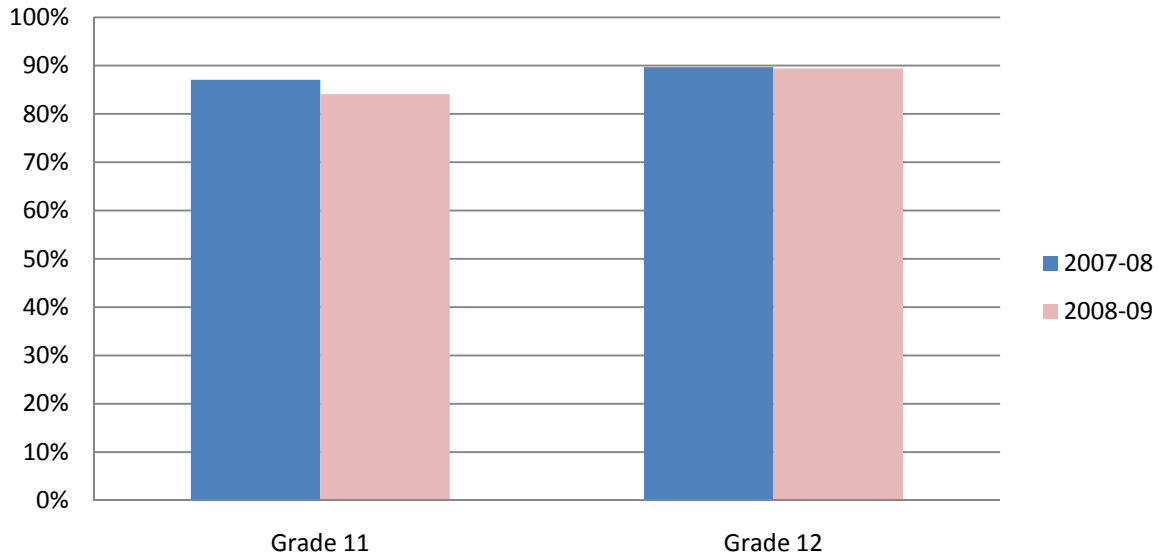
**HSGQE Mathematics: Alaska Native/American Indian**

Grade	2007-08 % Proficient	2008-09 % Proficient
Grade 11	83.62%	84.10%
Grade 12	88.60%	87.42%

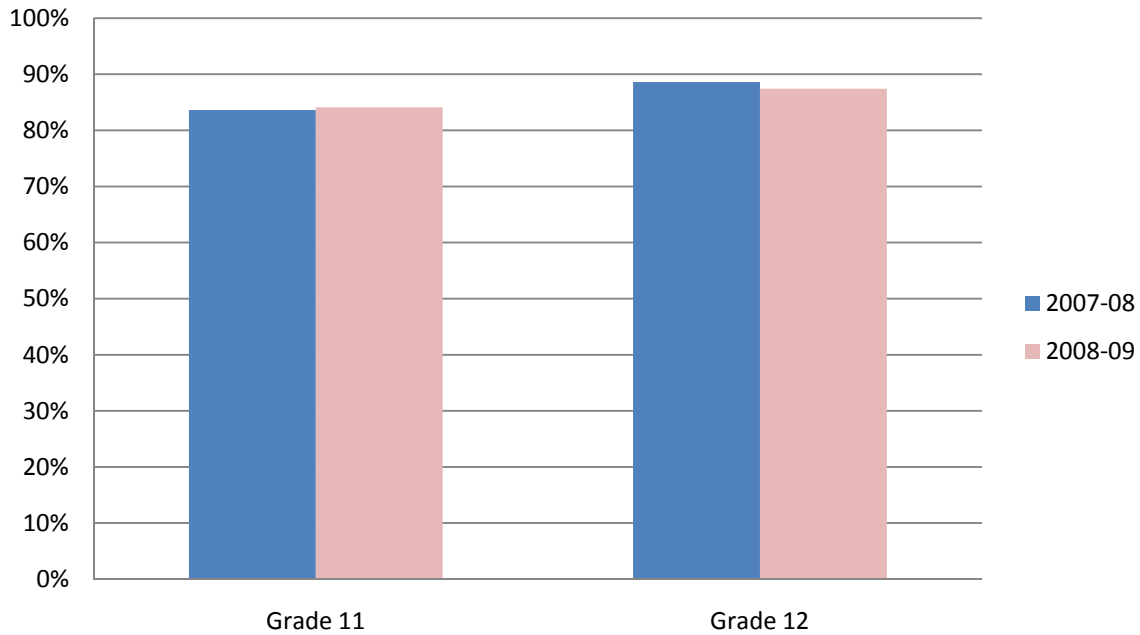
**Comparison of 2007-08 and 2008-09 Cumulative HSGQE  
Reading Proficiency for Alaska Native/American Indian  
Students in Grade 11 or 12**



**Comparison of 2007-08 and 2008-09 Cumulative HSGQE Writing Proficiency for Alaska Native/American Indian Students in Grade 11 or 12**



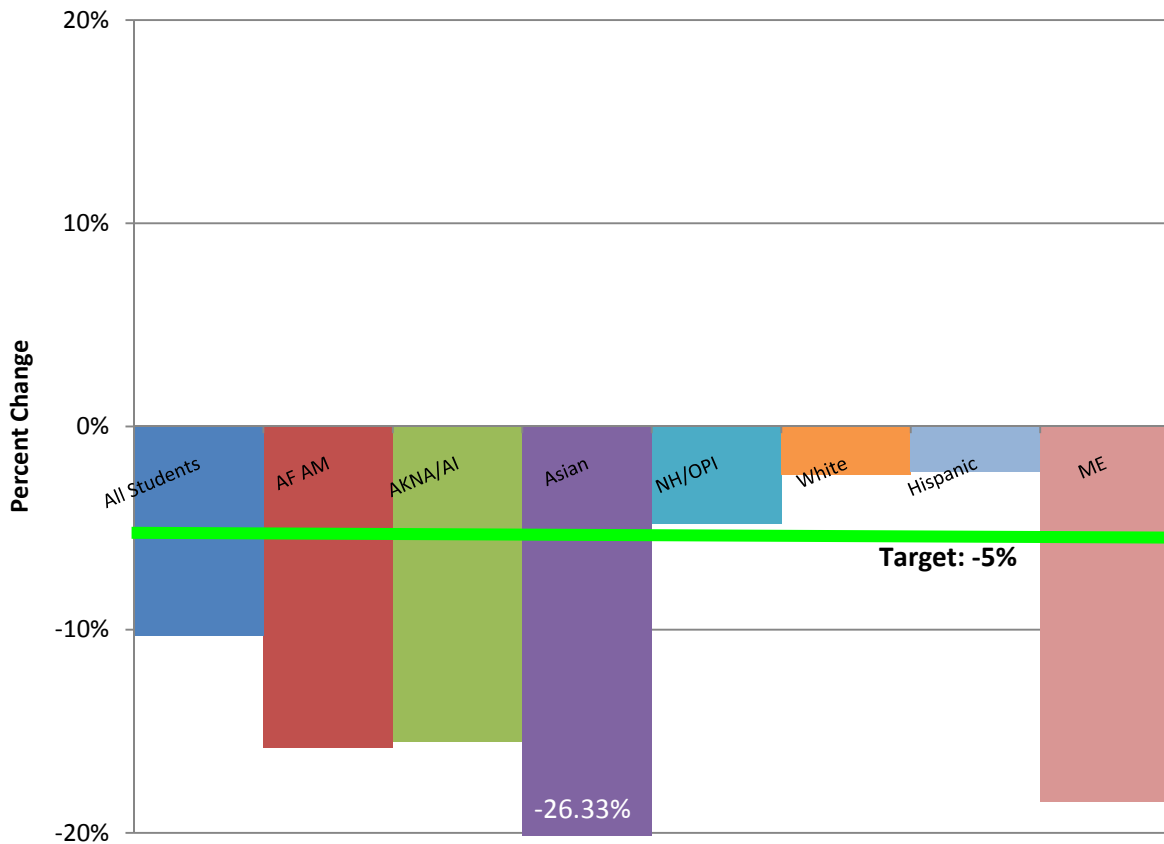
**Comparison of 2007-08 and 2008-09 Cumulative HSGQE Math Proficiency for Alaska Native/American Indian Students in Grade 11 or 12**



## Attachment 15: Dropout Rate by Race/Ethnicity

Dropout Rate - PRELIMINARY

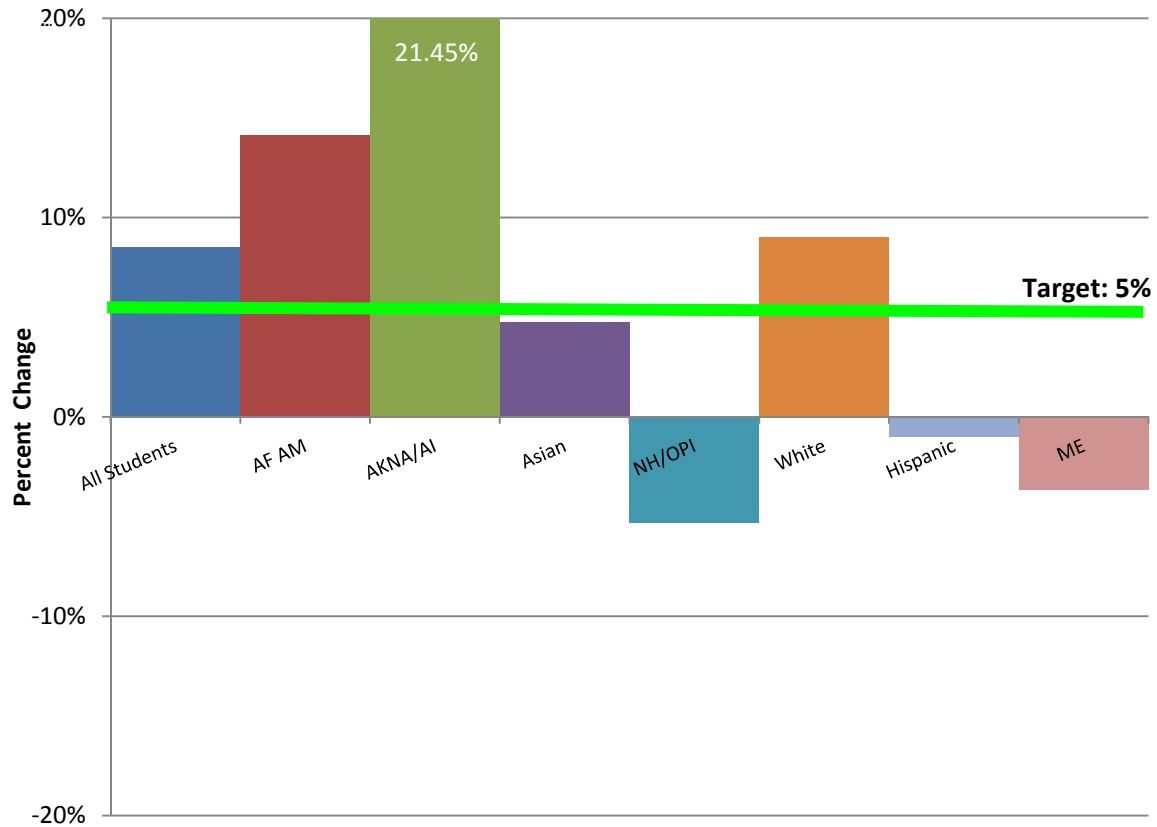
	07-08		08-09		Target	Results		
	Number Dropouts	Percent Dropout	Number Dropouts	Percent Dropout	Percentage Point Decrease Required	Percentage Point Gain or Loss After One Year	Percent Change	Target Met?
All Students	895	3.93%	793	3.53%	-0.20	-0.41	-10.31%	Yes
African-American/Black	83	5.81%	68	4.89%	-0.29	-0.92	-15.83%	Yes
Alaska Native/American Indian	261	7.21%	219	6.09%	-0.36	-1.12	-15.53%	Yes
Asian	86	4.05%	65	2.98%	-0.20	-1.07	-26.33%	Yes
Native Hawaiian/Other Pacific Islander	37	5.21%	38	4.96%	-0.26	-0.25	-4.81%	No
White	310	2.58%	293	2.52%	-0.13	-0.06	-2.41%	No
Hispanic	73	4.01%	72	3.92%	-0.20	-0.09	-2.23%	No
Multi-Ethnic (2 or More Races)	45	4.32%	38	3.53%	-0.22	-0.80	-18.45%	Yes



## Attachment 16: Graduation Rate by Race/Ethnicity

### Graduation Rate – PRELIMINARY

	07-08		08-09		Target	Results		
	Number Graduates	Graduation Rate	Number Graduates	Graduation Rate	Percentage Point Increase Required	Percentage Point Gain or Loss After One Year	Percent Change	Target Met?
All Students	2,965	64.96%	2,967	70.48%	3.25	5.52	8.50%	Yes
African-American/Black	179	56.29%	176	64.23%	2.81	7.94	14.11%	Yes
Alaska Native/American Indian	328	46.20%	349	56.11%	2.31	9.91	21.45%	Yes
Asian	274	65.71%	287	68.82%	3.29	3.11	4.73%	No
Native Hawaiian/Other Pacific Islander	76	62.81%	94	59.49%	3.14	-3.32	-5.29%	No
White	1,744	70.78%	1,721	77.17%	3.54	6.39	9.03%	Yes
Hispanic	225	67.98%	212	67.30%	3.40	-0.68	-1.00%	No
Multi-Ethnic (2 or More Races)	139	68.47%	128	65.98%	3.42	-2.49	-3.64%	No



**Attachment 17: Gifted Alaska Native/American Indian**

Alaska Native/American Indian Gifted Students  
2007-08 and 2008-09

	Gifted Alaska Native/American Indian Students	Total Gifted Students	% of Total Gifted
2008-09	332	3,563	9.31%
2007-08	286	3,314	8.63%

**Attachment 18: Mathematics Advancement**

**Year-to-Year Comparison of the Percent of Students in  
Grade 8 Who Successfully Completed Algebra I in Current or Previous Years  
Anchorage School District**

	Mathematics				Percentage Point Change
	2007-08 (Prior Year)		2008-09 (Current Year)		
	Number Enrolled	% Successfully Completed	Number Enrolled	% Successfully Completed	
Alaska Native/American Indian	617	11.51%	580	12.24%	0.73

**Year-to-Year Comparison of the Percent of Students Who Successfully Completed Algebra I by  
Grade 8 and Successfully Completed Geometry or Algebra II in Grade 9 with a C or Higher**

	2007-08 (Prior Year)	2008-09 (Current Year)	Percentage Point Change
	% of students who successfully completed Algebra I by grade 8 and successfully completed Geometry or Algebra II in grade 9	% of students who successfully completed Algebra I by grade 8 and successfully completed Geometry or Algebra II in grade 9	
Alaska Native/American Indian	65.96%	75.51%	9.55

**Attachment 19: Achievement Gap**

	Language Arts							
	2007-08 (Prior Year)			2008-09 (Current Year)			Result	
	Percent Proficient	Percent Proficient for White Students	Achievement Gap (Percentage Points)	Percent Proficient	Percent Proficient for White Students	Achievement Gap (Percentage Points)	Percentage Point Change in Achievement Gap	Significant Decrease?
<b>Alaska Native/American Indian</b>	68.94%	88.85%	19.91	65.04%	87.29%	22.25	2.34	N/A - Increase

	Mathematics							
	2007-08 (Prior Year)			2008-09 (Current Year)			Result	
	Percent Proficient	Percent Proficient for White Students	Achievement Gap (Percentage Points)	Percent Proficient	Percent Proficient for White Students	Achievement Gap (Percentage Points)	Percentage Point Change in Achievement Gap	Significant Decrease?
<b>Alaska Native/American Indian</b>	62.30%	82.05%	19.75	58.20%	80.49%	22.29	2.54	N/A - Increase