

APPENDIX B

Appendix B is a compilation of tables and graphs that supplement or expound on the information provided in the body of this document.

Table 29**Elementary Zone Exceptions**

| School Name | Membership | | |
|-------------------------|------------|-----------------|------------------|
| | 9/30/01 | Transferred In* | Transferred Out* |
| Abbott Loop | 431 | 43 | 66 |
| Airport Heights | 286 | 39 | 63 |
| Alpenglow | 594 | 52 | 75 |
| Aurora | 412 | 57 | 21 |
| Baxter | 451 | 77 | 95 |
| Bayshore | 559 | 67 | 63 |
| Bear Valley | 479 | 24 | 92 |
| Birchwood ABC K-8 | 393 | 124 | 29 |
| Bowman, Willard | 494 | 108 | 65 |
| Campbell | 468 | 16 | 96 |
| Chester Valley | 346 | 31 | 95 |
| Chinook | 569 | 51 | 168 |
| Chugach Optional | 235 | 227 | |
| Chugiak Elementary | 482 | 76 | 57 |
| College Gate | 445 | 43 | 74 |
| Creekside Park | 457 | 48 | 67 |
| Denali | 431 | 296 | 9 |
| Eagle River | 401 | 61 | 96 |
| Fairview | 455 | 38 | 72 |
| Fire Lake | 287 | 26 | 98 |
| Girdwood K-8 | 148 | 2 | 3 |
| Government Hill | 489 | 301 | 18 |
| Homestead | 388 | 79 | 68 |
| Huffman | 500 | 74 | 84 |
| Inlet View | 257 | 53 | 105 |
| Kasuun | 541 | 24 | 83 |
| Kincaid | 530 | 96 | 106 |
| Klatt | 419 | 17 | 86 |
| Lake Hood | 482 | 68 | 68 |
| Lake Otis | 439 | 89 | 85 |
| Mount Spurr | 262 | 31 | 13 |
| Mountain View | 420 | 48 | 96 |
| Muldoon | 493 | 32 | 83 |
| North Star | 497 | 116 | 71 |
| Northern Lights ABC K-8 | 610 | 443 | |
| Northwood | 337 | 19 | 61 |
| Nunaka Valley | 334 | 32 | 65 |
| Ocean View | 558 | 27 | 78 |
| O'Malley | 367 | 18 | 70 |
| Orion | 380 | 11 | 11 |
| Polaris K-6 | 227 | 37 | |
| Ptarmigan | 362 | 27 | 90 |
| Rabbit Creek | 383 | 34 | 80 |
| Ravenwood | 372 | 28 | 109 |
| Rogers Park | 518 | 28 | 73 |

Table 29**Elementary Zone Exceptions**

| School Name | Membership | | |
|-------------------|------------|-----------------|------------------|
| | 9/30/01 | Transferred In* | Transferred Out* |
| Russian Jack | 372 | 53 | 50 |
| Sand Lake | 609 | 268 | 82 |
| Scenic Park | 540 | 45 | 118 |
| Spring Hill | 397 | 29 | 77 |
| Susitna | 563 | 100 | 46 |
| Taku | 448 | 48 | 123 |
| Trailside | 461 | 21 | 39 |
| Tudor | 540 | 54 | 97 |
| Turnagain | 339 | 38 | 146 |
| Tyson, William | 478 | 40 | 60 |
| Ursa Major | 438 | 35 | 42 |
| Ursa Minor | 278 | 36 | 11 |
| Williwaw | 536 | 77 | 89 |
| Willow Crest | 469 | 50 | 94 |
| Wonder Park | 436 | 33 | 80 |
| Wood, Gladys | 487 | 75 | 126 |
| Regular Subtotals | 26,379 | 4,240 | 4,287 |
| Charter Schools** | 154 | 52 | |
| Elementary Totals | 26,533 | 4,292 | 4,287 |

*Zone exception data as of 01/31/2002

**Includes Aquarian Charter (K-6), Family Partnership Charter (K-6), and Village Charter (K-8)

Table 30

Middle School Zone Exceptions

| School Name | Membership | | |
|---------------------------------|------------|-----------------|------------------|
| | 9/30/01 | Transferred In* | Transferred Out* |
| Birchwood Secondary (6-8) | 98 | 36 | |
| Central Middle School | 799 | 199 | 24 |
| Clark Middle School | 900 | 3 | 80 |
| Girdwood Junior High (6-8) | 47 | | 1 |
| Goldenview Middle School | 1,013 | 90 | 23 |
| Gruening Middle School | 792 | 10 | 12 |
| Hanshew Middle School | 955 | 27 | 110 |
| Mears Middle School | 958 | 16 | 34 |
| Mirror Lake Middle School | 1,010 | 22 | 21 |
| Northern Lights Secondary (6-8) | 184 | 8 | |
| Romig Middle School | 797 | 74 | 60 |
| Wendler Middle School | 712 | 23 | 105 |
| From Elementary schools | | | 38 |
| Middle School Totals | 8,265 | 508 | 508 |

*Zone exception data as of 03/13/2002

Table 31**High School Zone Exceptions**

| School Name | Membership | | |
|------------------------------|------------|-----------------|------------------|
| | 9/30/01 | Transferred In* | Transferred Out* |
| Bartlett High School | 1,993 | 49 | 114 |
| Chugiak High School | 2,043 | 4 | 24 |
| Dimond High School | 2,238 | 29 | 27 |
| East High School | 2,144 | 170 | 60 |
| Family Partnership Secondary | 240 | 4 | |
| SAVE I | 256 | 7 | |
| Service High School | 2,398 | 11 | 55 |
| Steller Secondary | 293 | 5 | |
| West High School | 1,794 | 65 | 66 |
| McLaughlin Secondary | 158 | 3 | |
| Benson Secondary | 219 | 4 | |
| Benson SEARCH | 93 | 2 | |
| Polaris 7-12 | 227 | 2 | |
| From Middle Schools | | | 9 |
| High School Totals | 14,096 | 355 | 355 |

*Zone exception data as of 03/13/2002

Table 32

**ELEMENTARY STUDENT POPULATION MOBILITY BY SCHOOLS
2000-2001 SCHOOL YEAR**

| School Name | Membership Sept. 30, 2000 | New Enrollment | Withdrawals | Transfers Out | Transfers In | Total Mobility | Percent Mobility 2000-01 | Percent Mobility 1999-00 |
|-------------------------|------------------------------|-------------------|-------------|------------------|-----------------|-------------------|--------------------------------|--------------------------------|
| Abbott Loop | 452 | 41 | 33 | 31 | 32 | 137 | 30.3 | 26.1 |
| Airport Heights | 290 | 20 | 16 | 35 | 37 | 108 | 37.2 | 24.1 |
| Alpenglow | 568 | 98 | 31 | 13 | 22 | 164 | 28.9 | 26.5 |
| Aquarian Charter | 240 | 5 | 11 | 14 | 13 | 43 | 17.9 | 47.9 |
| Aurora | 418 | 31 | 49 | 13 | 20 | 113 | 27.0 | 35.7 |
| Baxter | 440 | 45 | 41 | 20 | 47 | 153 | 34.8 | 23.9 |
| Bayshore | 535 | 42 | 25 | 15 | 11 | 93 | 17.4 | 12.1 |
| Bear Valley | 466 | 40 | 20 | 10 | 17 | 87 | 18.7 | 17.4 |
| Birchwood ABC K-8 | 409 | 23 | 18 | 13 | 9 | 63 | 15.4 | 31.3 |
| Bowman, Willard | 592 | 90 | 24 | 32 | 24 | 170 | 28.7 | 27.9 |
| Campbell | 459 | 37 | 20 | 47 | 42 | 146 | 31.8 | 26.2 |
| Chester Valley | 316 | 42 | 33 | 27 | 17 | 119 | 37.7 | 32.4 |
| Chinook | 545 | 70 | 32 | 43 | 62 | 207 | 38.0 | 30.6 |
| Chugach Optional | 244 | 0 | 3 | 2 | 3 | 8 | 3.3 | 7.9 |
| Chugiak Elementary | 507 | 44 | 24 | 32 | 22 | 122 | 24.1 | 22.3 |
| College Gate | 453 | 50 | 29 | 32 | 33 | 144 | 31.8 | 36.1 |
| Creekside Park | 421 | 55 | 46 | 29 | 50 | 180 | 42.8 | 54.5 |
| Denali | 451 | 44 | 40 | 32 | 26 | 142 | 31.5 | 34.2 |
| Eagle River | 421 | 48 | 36 | 19 | 31 | 134 | 31.8 | 43.2 |
| Fairview | 467 | 64 | 53 | 83 | 71 | 271 | 58.0 | 59.0 |
| Family Partnership | 525 | 61 | 24 | 4 | 7 | 96 | 18.3 | 38.8 |
| Fire Lake | 305 | 37 | 21 | 15 | 19 | 92 | 30.2 | 27.8 |
| Girdwood K-8 | 160 | 23 | 15 | 13 | 1 | 52 | 32.5 | 32.2 |
| Government Hill | 459 | 35 | 34 | 22 | 46 | 137 | 29.8 | 28.0 |
| Homestead | 426 | 56 | 21 | 5 | 13 | 95 | 22.3 | 19.1 |
| Huffman | 495 | 41 | 24 | 11 | 8 | 84 | 17.0 | 12.9 |
| Inlet View | 261 | 34 | 14 | 15 | 14 | 77 | 29.5 | 35.7 |
| Kasuun | 525 | 35 | 20 | 14 | 23 | 92 | 17.5 | 29.7 |
| Kincaid | 501 | 31 | 18 | 22 | 29 | 100 | 20.0 | 18.0 |
| Klatt | 389 | 32 | 30 | 27 | 33 | 122 | 31.4 | 31.8 |
| Lake Hood | 484 | 27 | 20 | 38 | 33 | 118 | 24.4 | 28.4 |
| Lake Otis | 487 | 65 | 52 | 33 | 27 | 177 | 36.3 | 31.9 |
| Mount Spurr | 258 | 120 | 49 | 62 | 17 | 248 | 96.1 | 80.7 |
| Mountain View | 423 | 88 | 40 | 76 | 69 | 273 | 64.5 | 59.7 |
| Muldoon | 500 | 86 | 42 | 98 | 72 | 298 | 59.6 | 59.9 |
| North Star | 534 | 90 | 69 | 93 | 76 | 328 | 61.4 | 58.9 |
| Northern Lights ABC K-8 | 614 | 9 | 21 | 33 | 14 | 77 | 12.5 | 22.0 |
| Northwood | 354 | 75 | 44 | 44 | 45 | 208 | 58.8 | 56.0 |
| Nunaka Valley | 359 | 54 | 38 | 33 | 28 | 153 | 42.6 | 36.5 |
| Ocean View | 531 | 48 | 33 | 27 | 28 | 136 | 25.6 | 18.8 |
| O'Malley | 383 | 44 | 11 | 9 | 12 | 76 | 19.8 | 15.2 |
| Orion | 399 | 26 | 75 | 5 | 26 | 132 | 33.1 | 33.4 |
| Polaris K-6 | 228 | 10 | 7 | 12 | 9 | 38 | 16.7 | 21.7 |
| Ptarmigan | 456 | 47 | 33 | 62 | 65 | 207 | 45.4 | 45.4 |

Table 32**ELEMENTARY STUDENT POPULATION MOBILITY BY SCHOOLS
2000-2001 SCHOOL YEAR**

| School Name | Membership Sept. 30, 2000 | New Enrollment | Withdrawals | Transfers Out | Transfers In | Total Mobility | Percent Mobility 2000-01 | Percent Mobility 1999-00 |
|-----------------|------------------------------|-------------------|--------------|------------------|-----------------|-------------------|--------------------------------|--------------------------------|
| Rabbit Creek | 386 | 28 | 17 | 14 | 25 | 84 | 21.8 | 18.7 |
| Ravenwood | 384 | 76 | 28 | 11 | 13 | 128 | 33.3 | 20.8 |
| Rogers Park | 507 | 53 | 24 | 31 | 37 | 145 | 28.6 | 23.6 |
| Russian Jack | 381 | 45 | 36 | 38 | 37 | 156 | 40.9 | 55.0 |
| Sand Lake | 606 | 29 | 28 | 12 | 12 | 81 | 13.4 | 15.7 |
| Scenic Park | 529 | 50 | 26 | 42 | 39 | 157 | 29.7 | 31.5 |
| Spring Hill | 370 | 36 | 28 | 36 | 36 | 136 | 36.8 | 28.2 |
| Susitna | 563 | 66 | 30 | 28 | 41 | 165 | 29.3 | 29.1 |
| Taku | 401 | 62 | 37 | 36 | 54 | 189 | 47.1 | 41.9 |
| Trailside | 435 | 29 | 7 | 15 | 27 | 78 | 17.9 | 0.0 |
| Tudor | 535 | 64 | 55 | 60 | 42 | 221 | 41.3 | 36.9 |
| Turnagain | 386 | 42 | 33 | 33 | 21 | 129 | 33.4 | 30.5 |
| Tyson, William | 473 | 109 | 45 | 69 | 68 | 291 | 61.5 | 62.4 |
| Ursa Major | 420 | 128 | 61 | 20 | 4 | 213 | 50.7 | 42.1 |
| Ursa Minor | 249 | 66 | 52 | 12 | 10 | 140 | 56.2 | 60.6 |
| Village Charter | 110 | 18 | 33 | 13 | 6 | 70 | 63.6 | 0.0 |
| Williwaw | 520 | 59 | 62 | 48 | 71 | 240 | 46.2 | 50.3 |
| Willow Crest | 496 | 51 | 35 | 78 | 65 | 229 | 46.2 | 45.4 |
| Wonder Park | 442 | 53 | 43 | 69 | 43 | 208 | 47.1 | 45.5 |
| Wood, Gladys | 514 | 58 | 48 | 35 | 33 | 174 | 33.9 | 24.2 |
| TOTAL | 27,457 | 3,185 | 2,067 | 2,015 | 1,987 | 9,254 | 33.7 | 33.4 |

Table 33

**SECONDARY STUDENT POPULATION MOBILITY BY SCHOOLS
2000-2001 SCHOOL YEAR**

| School Name | Membership Sept. 30, 2000 | New Enrollment | Withdrawals | Transfers Out | Transfers In | Total Mobility | Percent Mobility 2000-01 | Percent Mobility 1999-00 |
|------------------------|------------------------------|-------------------|-------------|------------------|-----------------|-------------------|--------------------------------|--------------------------------|
| Central | 782 | 101 | 81 | 53 | 32 | 267 | 34.1 | 32.8 |
| Clark | 827 | 132 | 157 | 87 | 70 | 446 | 53.9 | 47.6 |
| Goldenview | 881 | 52 | 21 | 32 | 27 | 132 | 15.0 | 12.8 |
| Gruening | 600 | 80 | 41 | 9 | 17 | 147 | 24.5 | 19.8 |
| Hanshew | 914 | 71 | 54 | 60 | 61 | 246 | 26.9 | 23.9 |
| Mears | 1,017 | 69 | 60 | 32 | 49 | 210 | 20.6 | 23.1 |
| Mirror Lake | 640 | 40 | 33 | 22 | 15 | 110 | 17.2 | 18.4 |
| Romig | 859 | 87 | 110 | 93 | 56 | 346 | 40.3 | 40.4 |
| Wendler | 937 | 76 | 66 | 66 | 74 | 282 | 30.1 | 26.5 |
| Bartlett | 1,987 | 252 | 383 | 100 | 88 | 823 | 41.4 | 41.6 |
| Chugiak | 2,044 | 161 | 236 | 38 | 30 | 465 | 22.7 | 20.4 |
| Dimond | 2,151 | 155 | 340 | 92 | 90 | 677 | 31.5 | 27.7 |
| East | 2,073 | 252 | 409 | 124 | 125 | 910 | 43.9 | 39.9 |
| Service | 2,382 | 158 | 176 | 80 | 50 | 464 | 19.5 | 20.1 |
| West | 1,738 | 267 | 530 | 103 | 89 | 989 | 56.9 | 48.0 |
| AVAIL | 64 | 42 | 77 | 7 | 4 | 130 | 203.1 | 0.0 |
| Benson SAVE | 219 | 42 | 165 | 14 | 86 | 307 | 140.2 | 152.3 |
| Benson SEARCH | 97 | 67 | 156 | 29 | 65 | 317 | 326.8 | 151.1 |
| Family Partnership | 240 | 26 | 23 | 12 | 29 | 90 | 37.5 | 49.0 |
| KCC Part-time Students | 15 | 9 | 19 | 5 | 6 | 39 | 260.0 | 0.0 |
| McLaughlin | 158 | 135 | 170 | 150 | 131 | 586 | 370.9 | 369.1 |
| Polaris (7-12) | 226 | 7 | 21 | 15 | 15 | 58 | 25.7 | 26.2 |
| SAVE I | 271 | 75 | 216 | 15 | 92 | 398 | 146.9 | 151.1 |
| Steller (7-12) | 289 | 9 | 16 | 19 | 3 | 47 | 16.3 | 14.2 |
| Walden Pond* | 140 | 12 | 18 | 162 | 34 | 226 | 161.4 | 88.8 |
| | 21,551 | 2,377 | 3,578 | 1,419 | 1,338 | 8,712 | 40.4 | 39.0 |

Table 34

Comparison of EED and Former ASD Capacities

| SCHOOL | GSF | EED Capacity | Former ASD Capacity |
|--------------------------|------------|---------------------|----------------------------|
| <i>ELEMENTARY</i> | | | |
| Abbott Loop | 58,341 | 525 | 468 |
| Airport Heights | 39,450 | 341 | 360 |
| Alpenglow | 60,219 | 543 | 546 |
| Aurora | 54,393 | 488 | 475 |
| Baxter | 62,076 | 561 | 494 |
| Bayshore | 58,649 | 528 | 475 |
| Bear Valley | 50,160 | 447 | 483 |
| Birchwood K-8 | 48,276 | 429 | 384 |
| Bowman | 66,367 | 601 | 672 |
| Campbell | 61,438 | 555 | 494 |
| Chester Valley | 39,583 | 343 | 361 |
| Chinook | 57,314 | 516 | 513 |
| Chugach Optional | 32,592 | 270 | 210 |
| Chugiak | 61,468 | 555 | 494 |
| College Gate | 60,034 | 541 | 494 |
| Creekside Park | 59,825 | 539 | 432 |
| Denali | 64,123 | 580 | 450 |
| Eagle River | 58,086 | 523 | 456 |
| Fairview | 64,312 | 581 | 513 |
| Fire Lake | 50,160 | 447 | 437 |
| Girdwood K-8 | 25,110 | 125 | 171 |
| Government Hill | 58,401 | 526 | 468 |
| Homestead | 51,965 | 465 | 546 |
| Huffman | 60,610 | 547 | 504 |
| Inlet View | 32,470 | 268 | 266 |
| Kasuun | 61,599 | 556 | 494 |
| Kincaid | 61,599 | 556 | 468 |
| Klatt | 50,160 | 447 | 437 |
| Lake Hood | 61,599 | 556 | 494 |
| Lake Otis | 57,897 | 521 | 494 |
| Mountain View | 58,158 | 362 | 494 |
| Mt. Spurr | 41,535 | 524 | 323 |
| Muldoon | 61,599 | 556 | 468 |
| North Star | 75,674 | 687 | 558 |
| Northern Lights ABC | 61,599 | 556 | 448 |
| Northwood | 61,115 | 552 | 432 |
| Nunaka Valley | 44,100 | 388 | 361 |
| Ocean View | 59,736 | 539 | 546 |
| O'Malley | 50,253 | 448 | 480 |
| Orion | 74,196 | 673 | 475 |
| Ptarmigan | 36,841 | 314 | 304 |
| Rabbit Creek | 53,633 | 481 | 480 |
| Ravenwood | 50,160 | 447 | 483 |
| Rogers Park | 55,402 | 498 | 520 |
| Russian Jack | 61,599 | 556 | 468 |
| Sand Lake | 56,153 | 505 | 504 |
| Scenic Park | 50,912 | 455 | 494 |
| Spring Hill | 50,160 | 447 | 437 |

Table 34

Comparison of EED and Former ASD Capacities

| SCHOOL | GSF | EED Capacity | Former ASD Capacity |
|--|------------------|---------------------|----------------------------|
| Susitna | 55,023 | 494 | 475 |
| Taku | 53,270 | 477 | 380 |
| Trailside | 61,599 | 556 | 494 |
| Tudor | 56,757 | 511 | 468 |
| Turnagain | 54,000 | 484 | 432 |
| Tyson | 61,599 | 556 | 494 |
| Ursa Major | 59,477 | 536 | 494 |
| Ursa Minor | 41,941 | 367 | 304 |
| Williwaw | 56,500 | 508 | 494 |
| Willow Crest | 54,304 | 487 | 468 |
| Wonder Park | 52,638 | 471 | 494 |
| Wood Gladys | 47,777 | 424 | 456 |
| Total | 3,285,986 | 29,339 | 27,281 |
| SECONDARY - MS | | | |
| Central | 95,837 | 599 | 782 |
| Clark | 133,592 | 849 | 902 |
| Goldenview | 159,209 | 1,013 | 1,056 |
| Gruening | 124,862 | 792 | 828 |
| Hanshew | 150,085 | 955 | 1,012 |
| Mears | 150,506 | 958 | 946 |
| Mirror Lake 6-8 | 158,630 | 1,010 | 1,127 |
| Romig | 125,614 | 797 | 990 |
| Wendler | 112,696 | 712 | 966 |
| Totals | 1,211,031 | 7,685 | 8,609 |
| SECONDARY - HS | | | |
| Bartlett | 319,592 | 2,036 | 2,332 |
| Chugiak | 278,737 | 1,775 | 1,725 |
| Dimond | 304,177 | 1,937 | 2,178 |
| East | 352,461 | 2,245 | 2,244 |
| Service | 296,909 | 1,891 | 2,093 |
| West | 340,797 | 2,171 | 1,826 |
| King Career Center | 133,669 | 849 | N/A |
| Totals | 2,026,342 | 12,904 | 12,398 |
| OTHER | | | |
| Benson & Benson Search | 27,275 | 88 | 322 |
| SAVE I | 18,580 | 52 | 207 |
| Steller | 45,910 | 213 | 276 |
| Mt. Iliamna Pre School * ¹ | 28,928 | 230 | 170 |
| Polaris K-12 * ² * ³ | 35,264 | 148 | 471 |
| Whaley K-12 * ¹ * ² | 52,188 | 158 | 204 |

Notes to Spreadsheet:

- *1. ASD capacity not identified, assumed enrollment as capacity.
- *2. EED capacity assumed equal ratio between elementary and secondary students.
- *3. ASD capacity assume that portable classrooms are counted as building space.
- 4. Building gross square footage is not adjusted for special programs.

Chart 1

Student Membership
September 30 Actual Enrollment
25 Year History

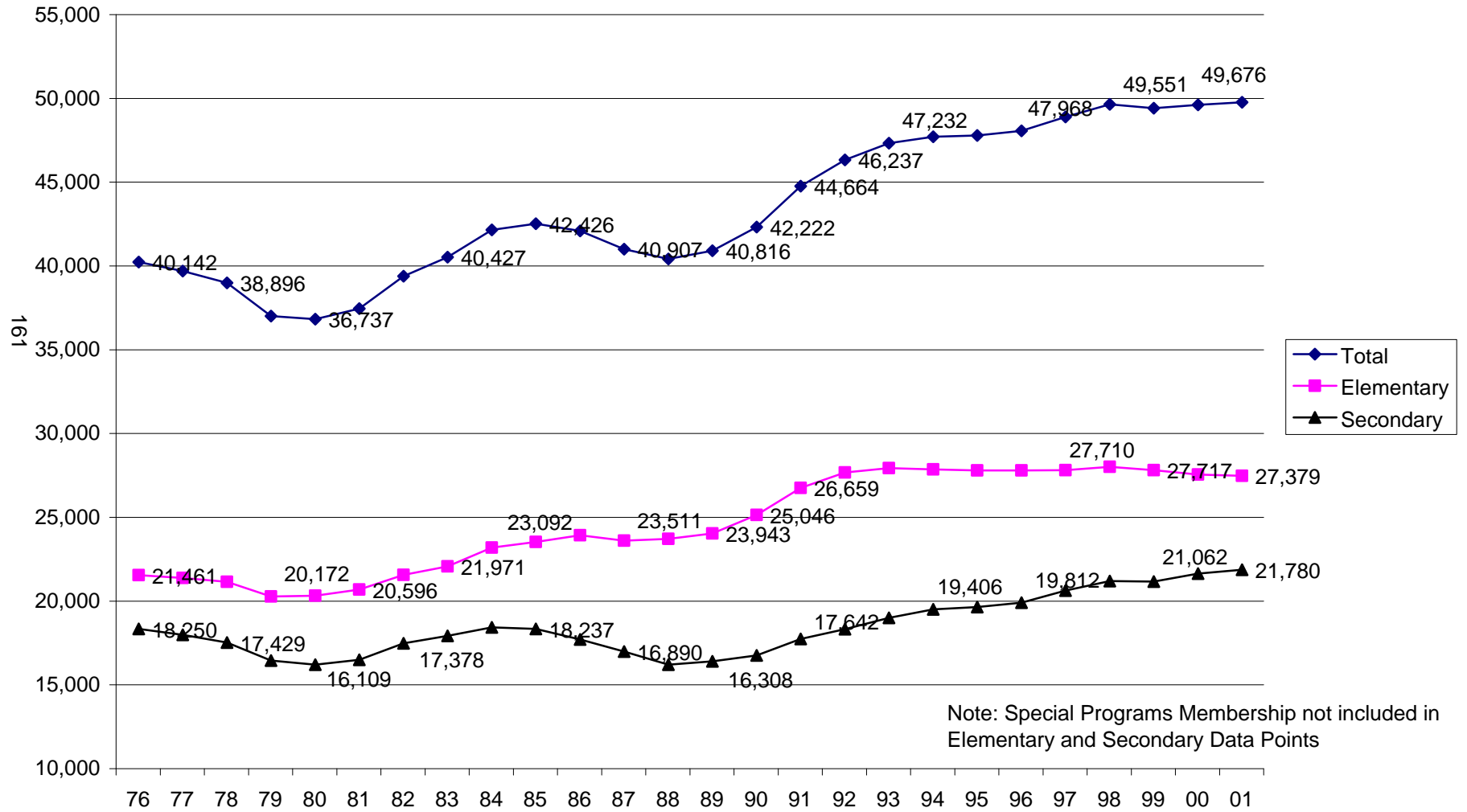


Chart 2

Grades K-12 Membership September 30, 2001

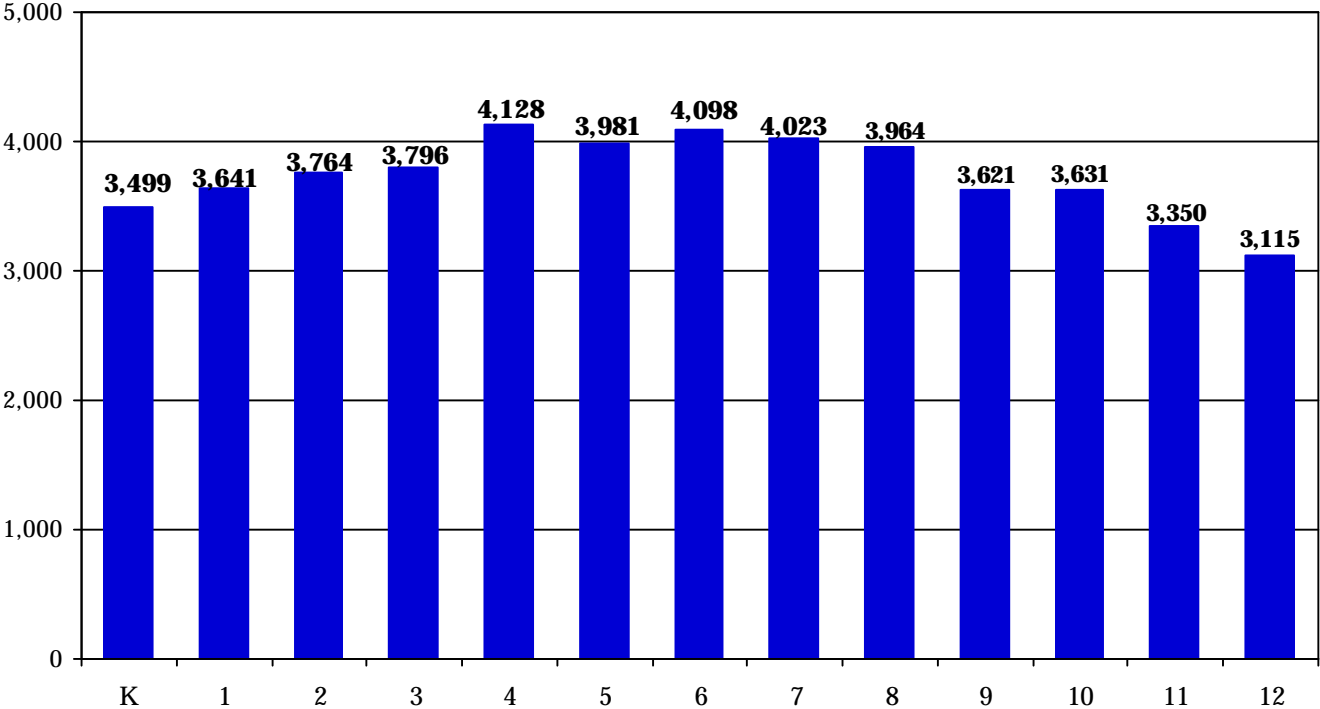


Chart 3

Ten Year History of Births and Kindergarten Enrollment

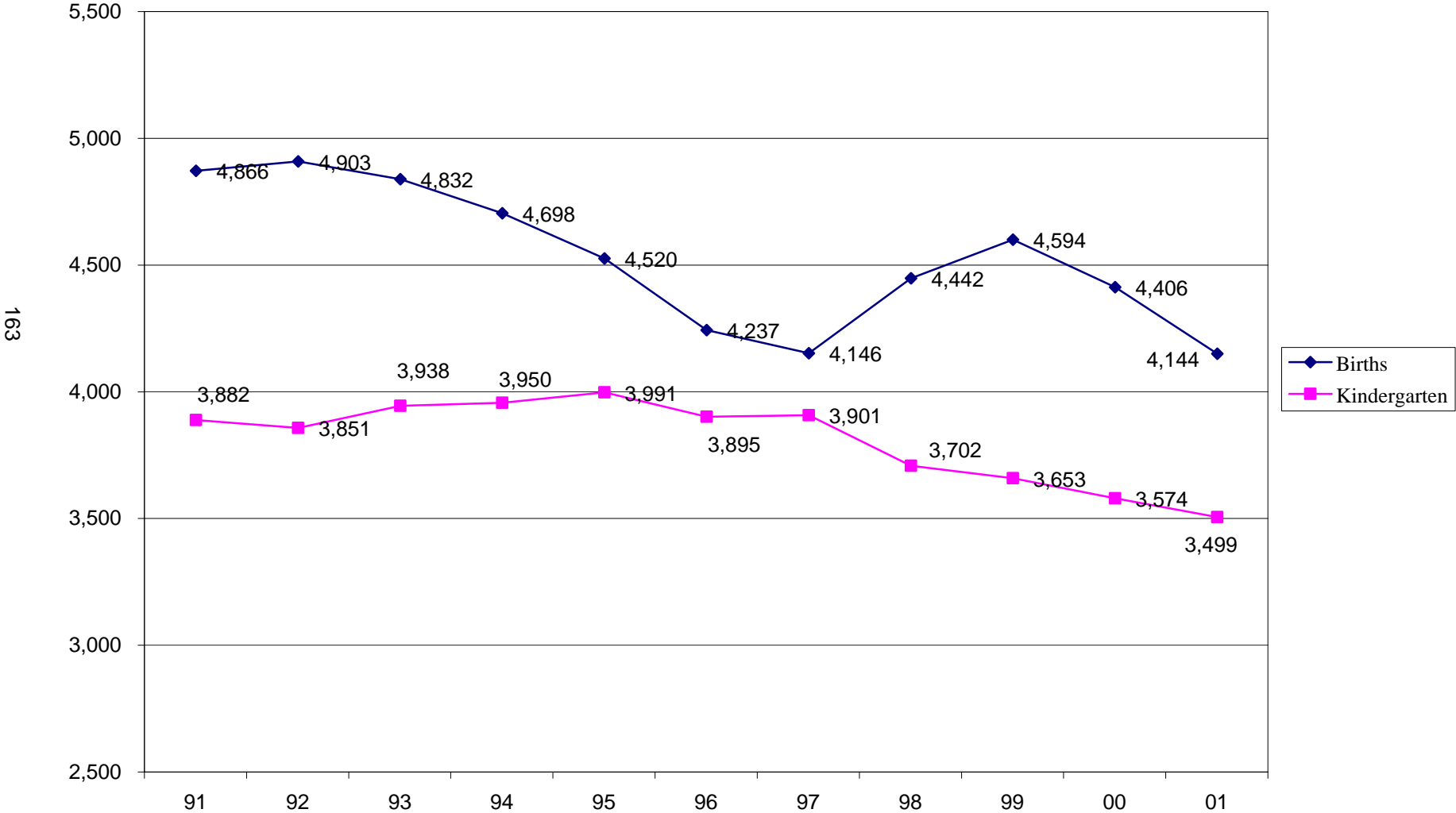


Chart 4

Kindergarten Enrollment

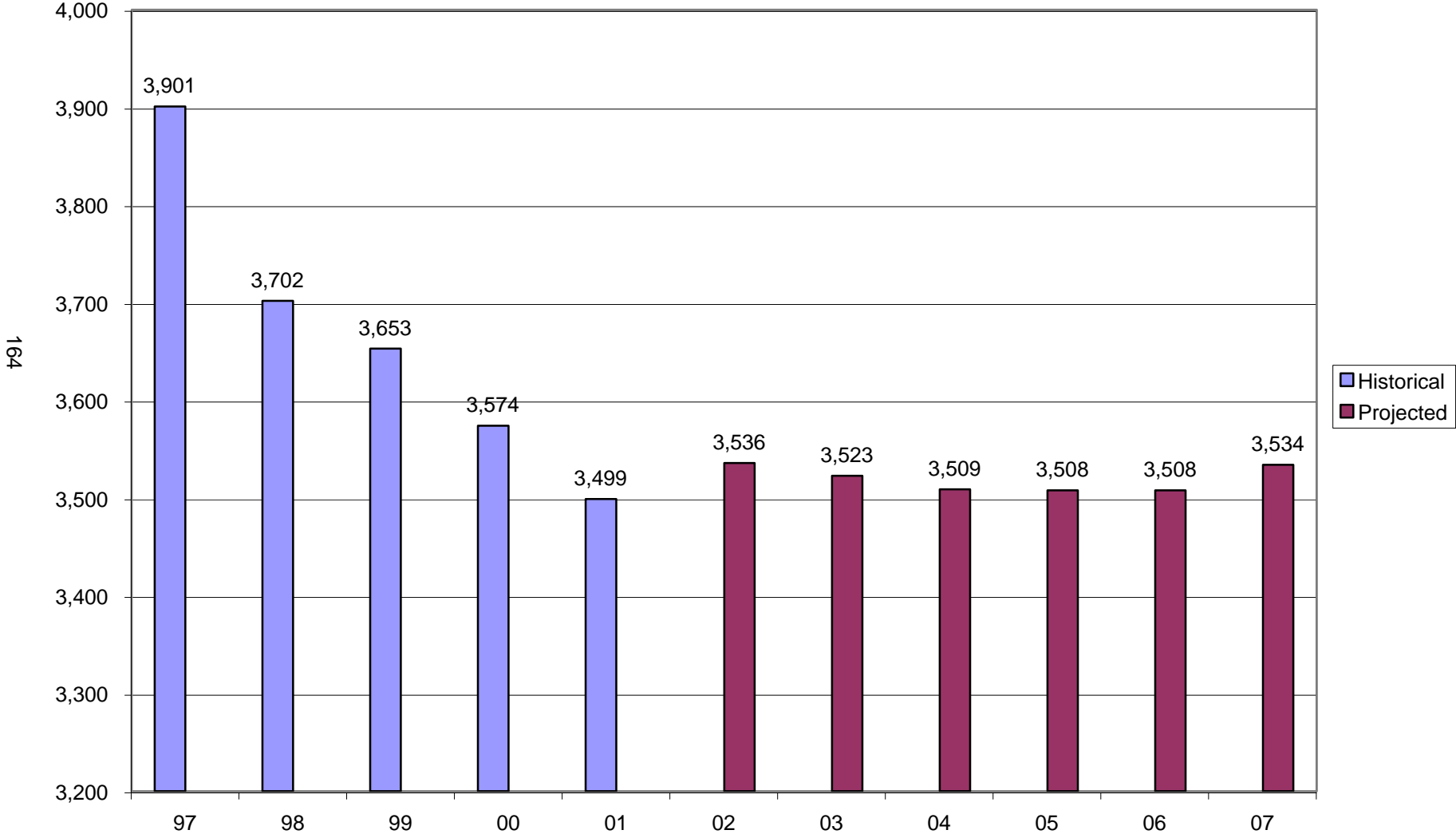


Chart 5

Elementary, Middle, And High School Membership Projections

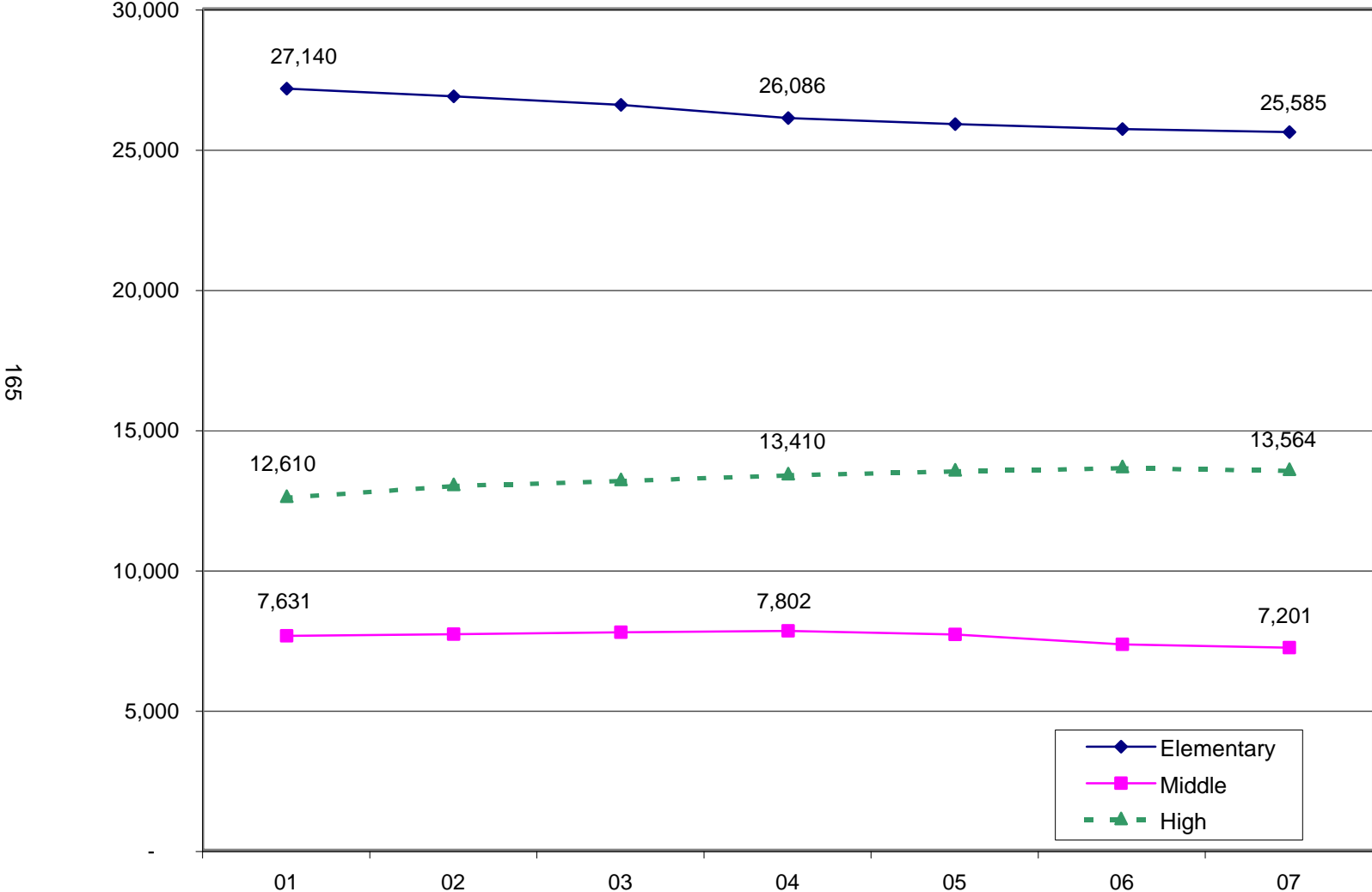


Chart 6

Projected Total Membership 2002-2007

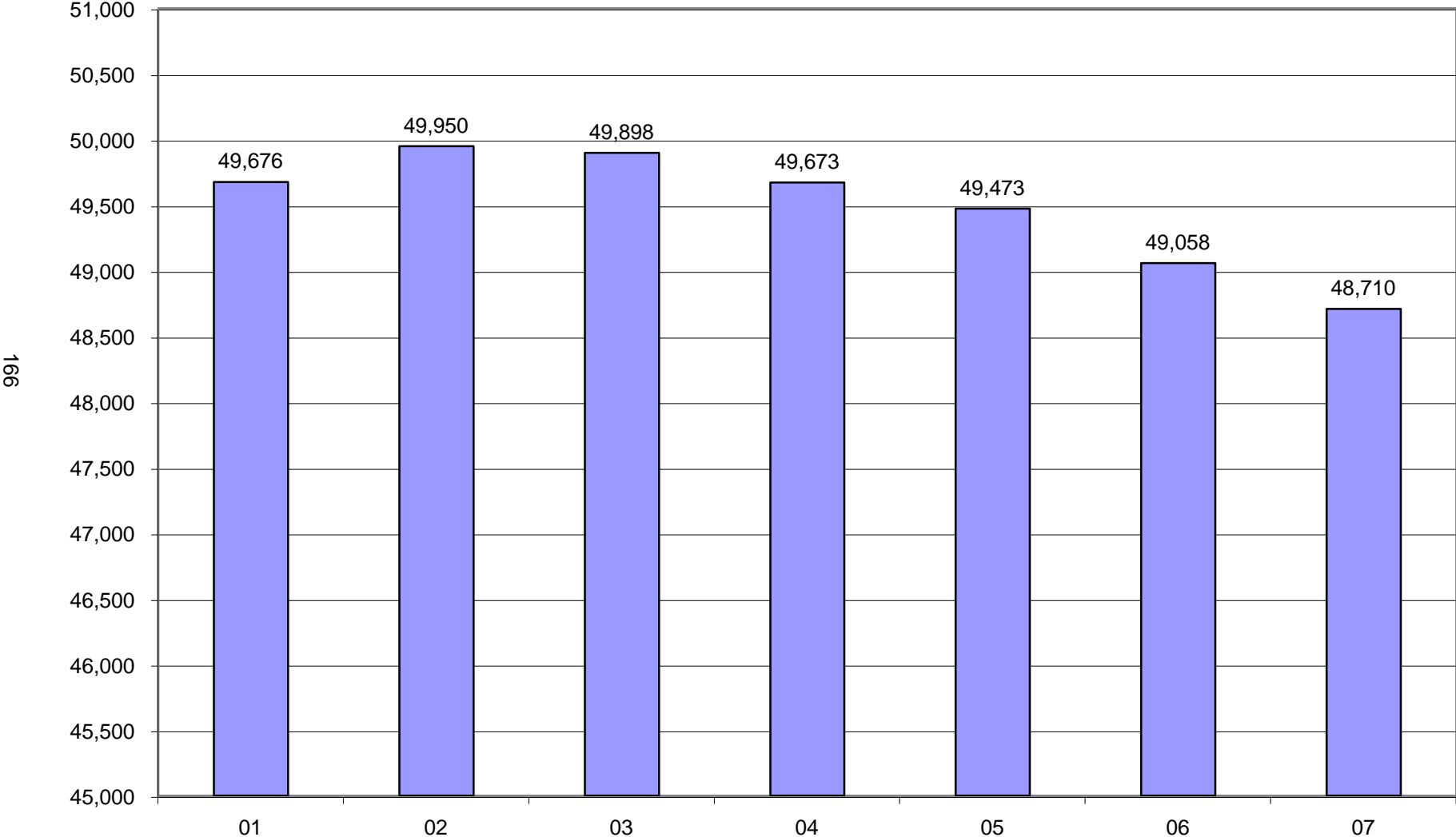


Chart 7

White and Minority Student Populations 1977 - 2001

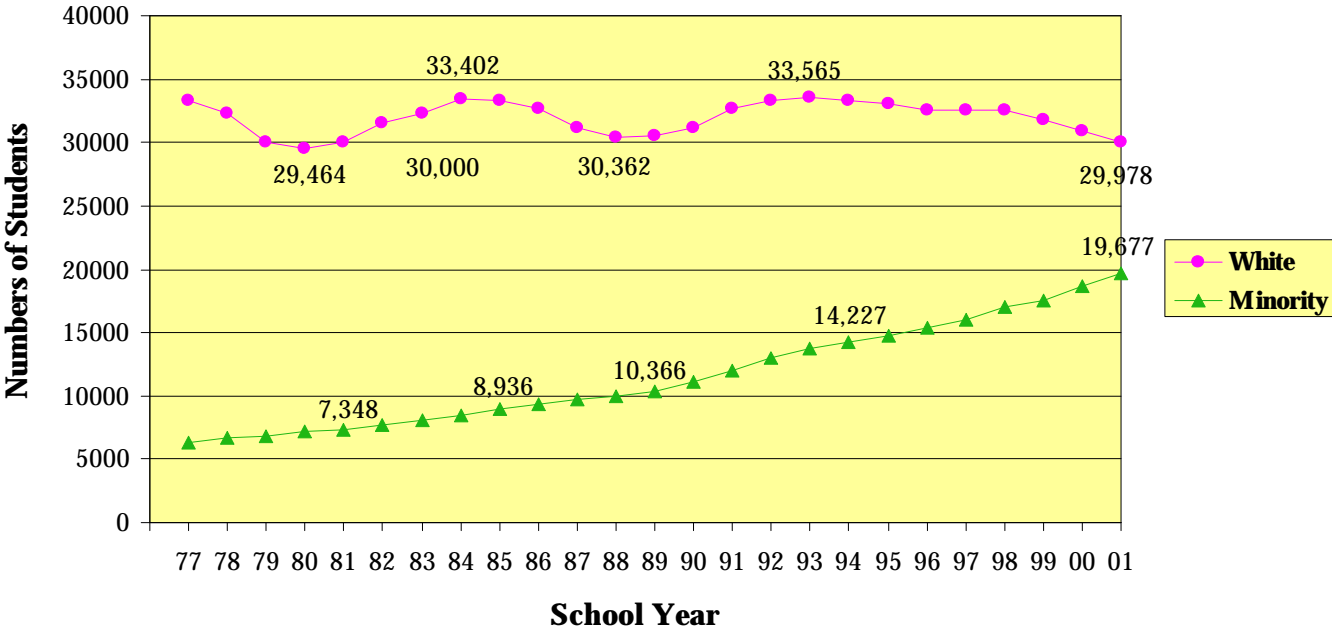


Chart 8

Student Mobility Averages 1994-1998

