

APPENDIX B

Appendix B is a compilation of tables and graphs that supplement or expound on the information provided in the body of this document.

Table 29**Elementary Zone Exceptions**

School Name	Membership		
	9/30/02	Transferred In*	Transferred Out*
Abbott Loop	441	42	75
Airport Heights	276	36	58
Alpenglow	464	21	75
Aurora	405	58	22
Baxter	437	83	108
Bayshore	563	61	67
Bear Valley	512	25	79
Birchwood ABC K-6	318	131	37
Bowman, Willard	541	95	65
Campbell	512	22	90
Chester Valley	311	43	86
Chinook	557	54	184
Chugach Optional	239	219	1
Chugiak Elementary	495	84	71
College Gate	391	41	66
Creekside Park	467	42	61
Denali	373	297	13
Eagle River	396	48	102
Fairview	477	58	85
Fire Lake	286	19	97
Girdwood K-8	165	1	4
Government Hill	494	315	18
Homestead	437	77	66
Huffman	483	64	91
Inlet View	255	62	115
Kasuun	527	23	88
Kincaid	533	107	93
Klatt	426	19	84
Lake Hood	474	85	71
Lake Otis	433	87	73
Mount Spurr	321	20	41
Mountain View	462	46	75
Muldoon	498	43	87
North Star	519	109	67
Northern Lights ABC K-8	621	459	1
Northwood	340	33	51
Nunaka Valley	329	49	52
Ocean View	573	28	84
O'Malley	344	11	70
Orion	314	49	15
Polaris K-6	218	55	1
Ptarmigan	367	32	118
Rabbit Creek	395	37	86
Ravenwood	441	26	97
Rogers Park	530	18	57

Table 29**Elementary Zone Exceptions**

School Name	Membership		
	9/30/02	Transferred In*	Transferred Out*
Russian Jack	417	58	56
Sand Lake	619	257	82
Scenic Park	539	32	116
Spring Hill	405	25	67
Susitna	568	97	51
Taku	417	30	123
Trailside	514	39	56
Tudor	550	50	96
Turnagain	343	32	164
Tyson, William	442	44	52
Ursa Major	402	39	36
Ursa Minor	269	35	13
Williwaw	560	75	94
Willow Crest	455	70	95
Wonder Park	448	23	98
Wood, Gladys	490	83	145
"blank"			3
Regular Subtotals	26,398	4,323	4,394
Charter Schools**	744	54	1
Whaley Elementary		7	
Elementary Totals	27,142	4,384	4,395

**Includes Aquarian Charter (K-6), Family Partnership Charter (K-6), and Village Charter (K-8)

Note: 1) Zone exception data as of 02/05/2003

2) Student membership includes preschool and level 3 special ed students.

Table 30**Middle School Zone Exceptions**

School Name	Membership		
	9/30/02	Transferred In*	Transferred Out*
Central Middle School	776	173	20
Clark Middle School	977		75
Goldenview Middle School	941	98	23
Gruening Middle School	635	3	7
Hanshaw Middle School	963	30	133
Mears Middle School	1,069	13	35
Mirror Lake Middle School	685	42	13
Romig Middle School	838	54	56
Wendler Middle School	933	37	97
From Elementary schools		9	
Middle School Totals	7,817	459	459

*Zone exception data as of 02/05/2003

Table 31**High School Zone Exceptions**

School Name	Membership		
	9/30/02	Transferred In*	Transferred Out*
Bartlett High School	2,072	88	93
Chugiak High School	2,032	7	38
Dimond High School	2,331	26	38
East High School	2,254	120	94
Family Partnership Secondary	316	3	
SAVE I	228	3	
Service High School	2,453	10	50
Steller Secondary	296	281	
West High School	1,898	90	52
McLaughlin Secondary	196	3	
Benson Secondary	217	8	
Benson SEARCH	93	5	
AVAIL	60	1	
Whaley Secondary		1	
Polaris 7-12	229	27	
From Middle Schools			20
High School Totals	14,675	673	385

*Zone exception data as of 02/05/2003

Table 32

**ELEMENTARY STUDENT POPULATION MOBILITY BY SCHOOLS
2001-2002 SCHOOL YEAR**

School Name	Membership	New	Withdrawals	Returns	Transfers		Total	Percent	Percent
	Sept. 30, 2001	Enrollment			Out	In	Mobility	Mobility 2001-02	Mobility 2000-01
Abbott Loop	431	43	36	8	23	41	151	35.0	30.3
Airport Heights	286	20	18	1	25	23	87	30.4	37.2
Alpenglow	594	86	33	0	14	15	148	24.9	28.9
Aquarian Charter	231	10	13	1	18	16	58	25.1	17.9
Aurora	413	39	43	2	10	17	111	26.9	27.0
Baxter	451	48	33	8	35	29	153	33.9	34.8
Bayshore	563	57	23	1	13	21	115	20.4	17.4
Bear Valley	480	63	21	2	12	13	111	23.1	18.7
Birchwood ABC K-6	394	24	13	0	3	7	47	11.9	15.4
Bowman, Willard	568	67	21	4	17	23	132	23.2	28.7
Campbell	468	56	29	7	22	34	148	31.6	31.8
Chester Valley	347	16	29	8	31	18	102	29.4	37.7
Chinook	570	47	48	5	44	33	177	31.1	38.0
Chugach Optional	235	1	2	0	1	2	6	2.6	3.3
Chugiak Elementary	483	29	15	1	15	24	84	17.4	24.1
College Gate	445	37	44	1	30	29	141	31.7	31.8
Creekside Park	460	55	51	5	50	56	217	47.2	42.8
Denali	431	40	49	5	40	37	171	39.7	31.5
Eagle River	402	45	24	5	40	28	142	35.3	31.8
Fairview	456	49	42	8	49	58	206	45.2	58.0
Family Partnership	389	45	42	0	17	5	109	28.0	18.3
Fire Lake	289	36	20	0	11	12	79	27.3	30.2
Girdwood K-8	149	18	12	4	5	6	45	30.2	32.5
Government Hill	489	23	31	8	22	27	111	22.7	29.8
Homestead	390	37	25	2	13	15	92	23.6	22.3
Huffman	503	37	18	1	11	15	82	16.3	17.0
Inlet View	257	21	15	2	19	26	83	32.3	29.5
Kasuun	542	27	29	2	21	26	105	19.4	17.5
Kincaid	532	33	18	7	18	17	93	17.5	20.0
Klatt	420	21	19	1	29	36	106	25.2	31.4
Lake Hood	484	44	41	12	28	23	148	30.6	24.4
Lake Otis	439	35	47	9	44	28	163	37.1	36.3
Mount Spurr	266	126	44	5	41	4	220	82.7	96.1
Mountain View	420	102	55	14	78	74	323	76.9	64.5
Muldoon	496	63	48	6	63	53	233	47.0	59.6
North Star	513	81	48	15	79	71	294	57.3	61.4
Northern Lights ABC K-8	610	7	13	0	34	33	87	14.3	12.5
Northwood	366	57	35	5	38	57	192	52.5	58.8
Nunaka Valley	336	28	35	2	47	36	148	44.0	42.6
Ocean View	562	46	30	3	20	45	144	25.6	25.6
O'Malley	368	35	19	2	8	12	76	20.7	19.8
Orion	383	40	77	0	9	14	140	36.6	33.1
Polaris K-6	227	9	13	0	8	10	40	17.6	16.7
Ptarmigan	362	40	32	5	45	39	161	44.5	45.4

Table 32**ELEMENTARY STUDENT POPULATION MOBILITY BY SCHOOLS
2001-2002 SCHOOL YEAR**

School Name	Membership Sept. 30, 2001	New Enrollment	Withdrawals	Returns	Transfers		Total Mobility	Percent	Percent
					Out	In		Mobility 2001-02	Mobility 2000-01
Rabbit Creek	385	28	19	0	14	6	67	17.4	21.8
Ravenwood	399	82	19	1	8	7	117	29.3	33.3
Rogers Park	525	39	26	1	24	32	122	23.2	28.6
Russian Jack	383	36	29	8	48	33	154	40.2	40.9
Sand Lake	610	31	24	0	19	20	94	15.4	13.4
Scenic Park	541	44	26	0	24	34	128	23.7	29.7
Spring Hill	399	39	27	7	43	38	154	38.6	36.8
Susitna	564	34	34	5	35	45	153	27.1	29.3
Taku	449	47	38	10	50	47	192	42.8	47.1
Trailside	462	34	25	4	14	19	96	20.8	17.9
Tudor	541	63	58	9	74	63	267	49.4	41.3
Turnagain	339	25	25	7	36	22	115	33.9	33.4
Tyson, William	478	71	55	4	74	59	263	55.0	61.5
Ursa Major	440	134	71	1	25	11	242	55.0	50.7
Ursa Minor	278	85	40	0	7	9	141	50.7	56.2
Village Charter	154	40	30	3	36	23	132	85.7	63.6
Williwaw	538	63	48	9	65	88	273	50.7	46.2
Willow Crest	471	40	51	8	68	70	237	50.3	46.2
Wonder Park	436	61	46	1	49	61	218	50.0	47.1
Wood, Gladys	487	37	32	4	25	28	126	25.9	33.9
TOTAL	27,379	2,876	2,076	259	1,938	1,923	9,072	33.1	33.7

Note: Membership includes preschool and level 3 special ed students.

Table 33

**SECONDARY STUDENT POPULATION MOBILITY BY SCHOOLS
2001-2002 SCHOOL YEAR**

School Name	Membership Sept. 30, 2001	New Enrollment	Withdrawals	Returns	Transfers		Total Mobility	Percent	Percent
					Out	In		2001-02	2000-01
Central	779	114	75	7	51	30	277	35.6	34.1
Clark	900	103	110	12	88	59	372	41.3	53.9
Goldenview	891	58	35	5	35	27	160	18.0	15.0
Gruening	630	48	33	3	14	16	114	18.1	24.5
Hanshew	977	63	82	17	58	50	270	27.6	26.9
Mears	1,041	60	65	15	42	63	245	23.5	20.6
Mirror Lake	635	52	35	9	15	19	130	20.5	17.2
Romig	829	86	106	15	69	66	342	41.3	40.3
Wendler	949	64	75	19	82	83	323	34.0	30.1
Bartlett	1,993	202	315	32	130	82	761	38.2	41.4
Chugiak	2,043	121	199	15	35	17	387	18.9	22.7
Dimond	2,238	101	303	38	97	82	621	27.7	31.5
East	2,144	164	428	77	138	132	939	43.8	43.9
Service	2,398	120	177	14	87	47	445	18.6	19.5
West	1,794	156	361	62	130	115	824	45.9	56.9
AVAIL	62	17	83	31	9	10	150	241.9	203.1
Benson SAVE	219	1	131	28	14	86	260	118.7	140.2
Benson SEARCH	93	1	81	51	16	34	183	196.8	326.8
Family Partnership	210	18	28	1	9	14	70	33.3	37.5
KCC Part-time Students	10	5	14	10	4	2	35	350.0	260.0
McLaughlin	169	49	221	95	130	170	665	393.5	370.9
Polaris (7-12)	227	8	13	0	8	5	34	15.0	25.7
SAVE I	256	7	219	45	8	108	387	151.2	146.9
Steller (7-12)	293	7	9	0	26	6	48	16.4	16.3
Walden Pond*	0	0	0		0	0	0	0.0	161.4
	21,780	1,625	3,198	601	1,295	1,323	8,042	36.9	40.4

Note: Membership includes level 3 special ed students.

Table 34

Comparison of Revised EED and Previous EED Capacities

SCHOOL	Gross Square Feet	Actual Enrollment (9/30/02)	Revised EED Capacity	Previous EED Capacity
<i>ELEMENTARY</i>				
Abbott Loop	58,341	441	506	525
Airport Heights	39,450	276	328	341
Alpenglow	60,219	464	523	543
Aquarian Charter		228	n/a	n/a
Aurora	54,393	405	470	488
Baxter	62,076	437	540	561
Bayshore	58,649	563	509	528
Bear Valley	50,160	512	431	447
Birchwood ABC (K-6)	48,276	318	413	443
Bowman	66,367	541	579	601
Campbell	61,438	512	534	555
Chester Valley	39,583	311	329	343
Chinook	57,314	557	497	516
Chugach Optional	32,592	239	259	270
Chugiak	61,468	495	535	555
College Gate	60,034	391	522	541
Creekside Park	59,825	467	520	539
Denali	62,915	373	547	580
Eagle River	58,086	396	504	523
Fairview	64,312	477	560	581
Family Partnership		649	n/a	n/a
Fire Lake	50,160	286	431	447
Girdwood (K-8) *2	25,110	165	123	125
Gladys Wood	47,777	490	408	424
Government Hill	58,401	494	507	526
Homestead	51,965	437	448	465
Huffman	60,610	483	527	547
Inlet View	32,470	255	257	268
Kasuun	61,599	527	536	556
Kincaid	61,599	533	536	556
Klatt	50,160	426	431	447
Lake Hood	61,599	474	536	556
Lake Otis	57,897	433	502	521
Mountain View	58,158	462	505	524
Mt. Spurr	41,535	321	348	362
Muldoon	61,599	498	536	556
North Star	75,674	519	662	687
Northern Lights ABC (K-8)*2	61,599	621	536	556
Northwood	61,115	340	532	552
Nunaka Valley	44,100	329	373	388
Ocean View	59,736	573	519	539
O'Malley	50,253	344	432	448
Orion	74,196	314	649	673
Polaris (K-6) *1,*2	17,984	218	71	74
Ptarmigan	36,841	367	302	314
Rabbit Creek	53,633	395	463	481
Ravenwood	50,160	441	431	447
Rogers Park	55,402	530	479	498

Table 34

Comparison of Revised EED and Previous EED Capacities

SCHOOL	Gross Square Feet	Actual Enrollment (9/30/02)	Revised EED Capacity	Previous EED Capacity
Russian Jack	61,599	417	536	556
Sand Lake	56,153	619	486	505
Scenic Park	50,912	539	438	455
Spring Hill	50,160	405	431	447
Susitna	55,023	568	476	494
Taku	53,270	417	460	477
Trailside	61,599	514	536	556
Tudor	56,757	550	492	511
Turnagain	54,000	343	466	484
Tyson	61,599	442	536	556
Ursa Major	59,477	402	517	536
Ursa Minor	41,941	269	352	367
Village Charter (K-8)		183	n/a	n/a
Williwaw	56,500	560	489	508
Willow Crest	54,304	455	469	487
Wonder Park	52,638	448	454	471
Totals	3,303,970	27,458	28,288	29,427
SECONDARY - MS				
Central	95,837	776	568	599
Clark	133,592	977	807	849
Goldenview	159,209	941	964	1,013
Gruening	124,862	635	752	792
Hanshaw	150,085	963	908	955
Mears	150,506	1,069	911	958
Mirror Lake (6-8) *2	158,630	685	960	1,010
Romig	125,614	838	757	797
Wendler	112,696	933	676	712
Totals	1,211,031	7,817	7,303	7,685
SECONDARY - HS				
Bartlett	319,592	2,072	1,937	2,036
Chugiak	261,054	2,032	1,582	1,775
Dimond	281,845	2,331	1,843	1,937
East	333,331	2,254	2,136	2,245
Service	296,909	2,453	1,799	1,891
West	318,194	1,898	2,065	2,171
Totals	1,810,925	13,040	11,362	12,055
OTHER				
Benson & Benson SEARCH	27,275	310	85	88
King Career Center	133,669		807	849
Mt. Iliamna	28,928	88	221	230
Polaris (7-12) *1,*2	17,280	229	71	74
SAVE I	18,580	228	50	52
Steller	45,910	296	200	213
Whaley Center (K-12)	52,188	152	244	262
Alternatives	0	411	n/a	n/a

Table 34

Comparison of Revised EED and Previous EED Capacities

SCHOOL	Gross Square Feet	Actual Enrollment (9/30/02)	Revised EED Capacity	Previous EED Capacity
Total	323,830	1,714	1,678	1,768
ASD Total	6,649,756	50,029	48,679	50,831

Notes to Spreadsheet:

*1. Includes space of 6 portables

*2. Capacity adjusted based upon the ratio of elementary and secondary students.

School membership includes preschool and level 3 special ed students.

All capacities were revised as a result of the new DEED capacity formula effective 12/2002.

Chart 1

**Student Membership
September 30 Actual Enrollment
25 Year History**

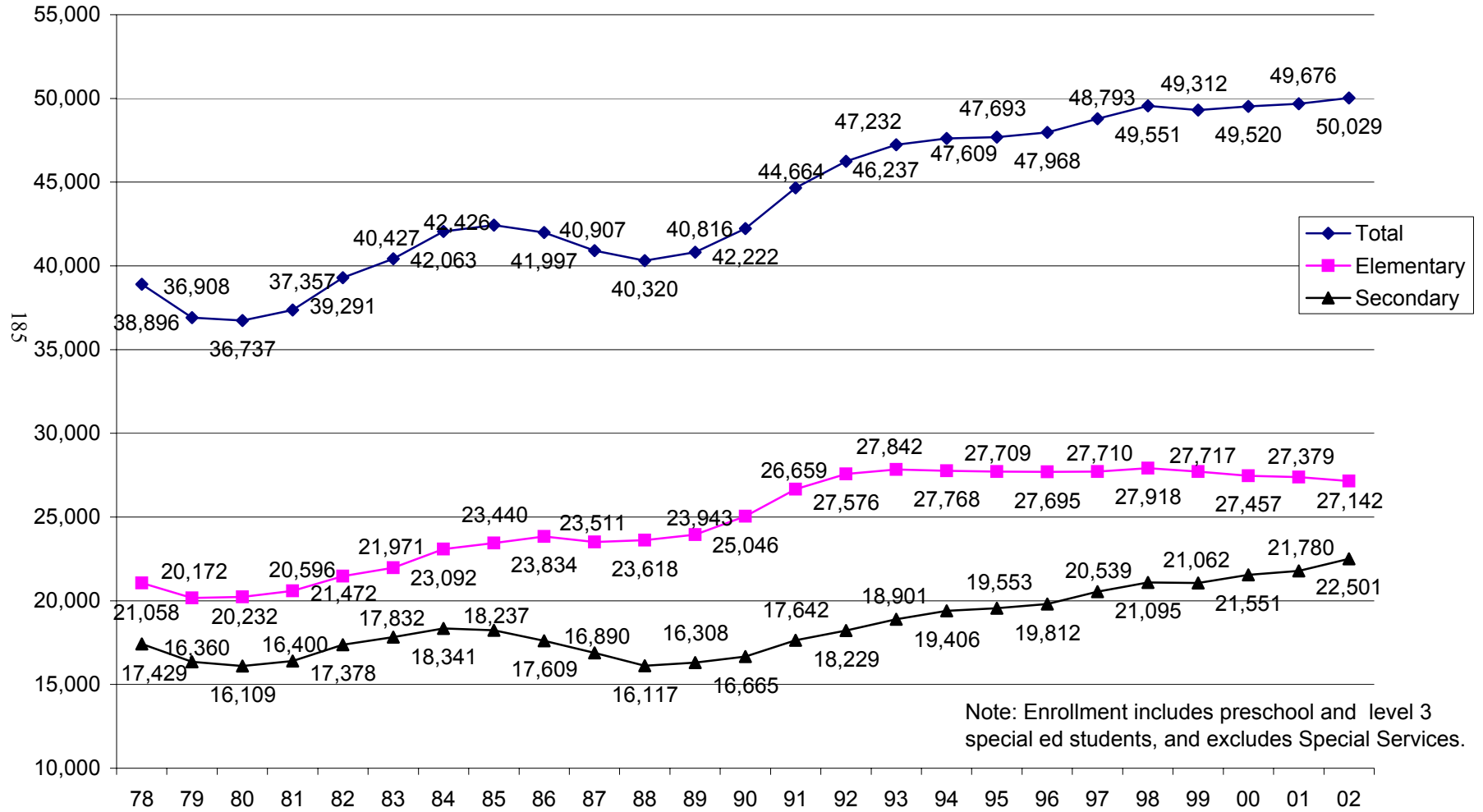
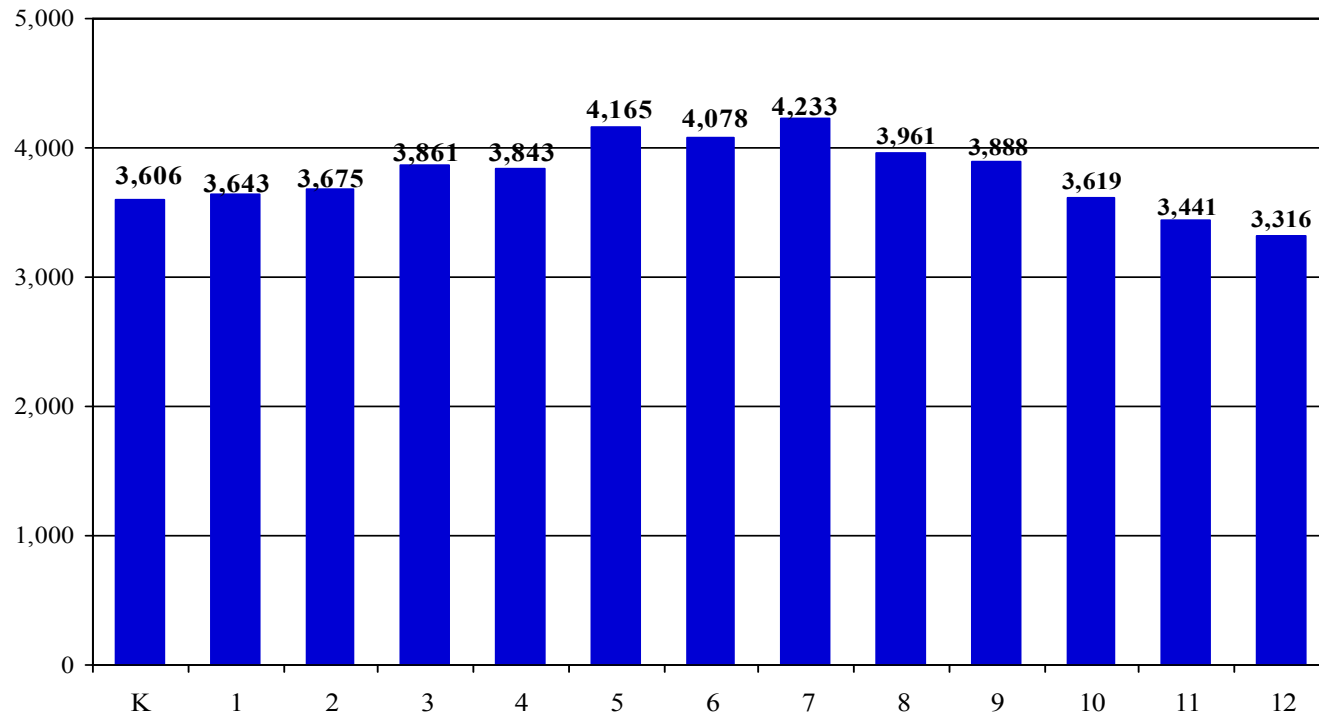


Chart 2

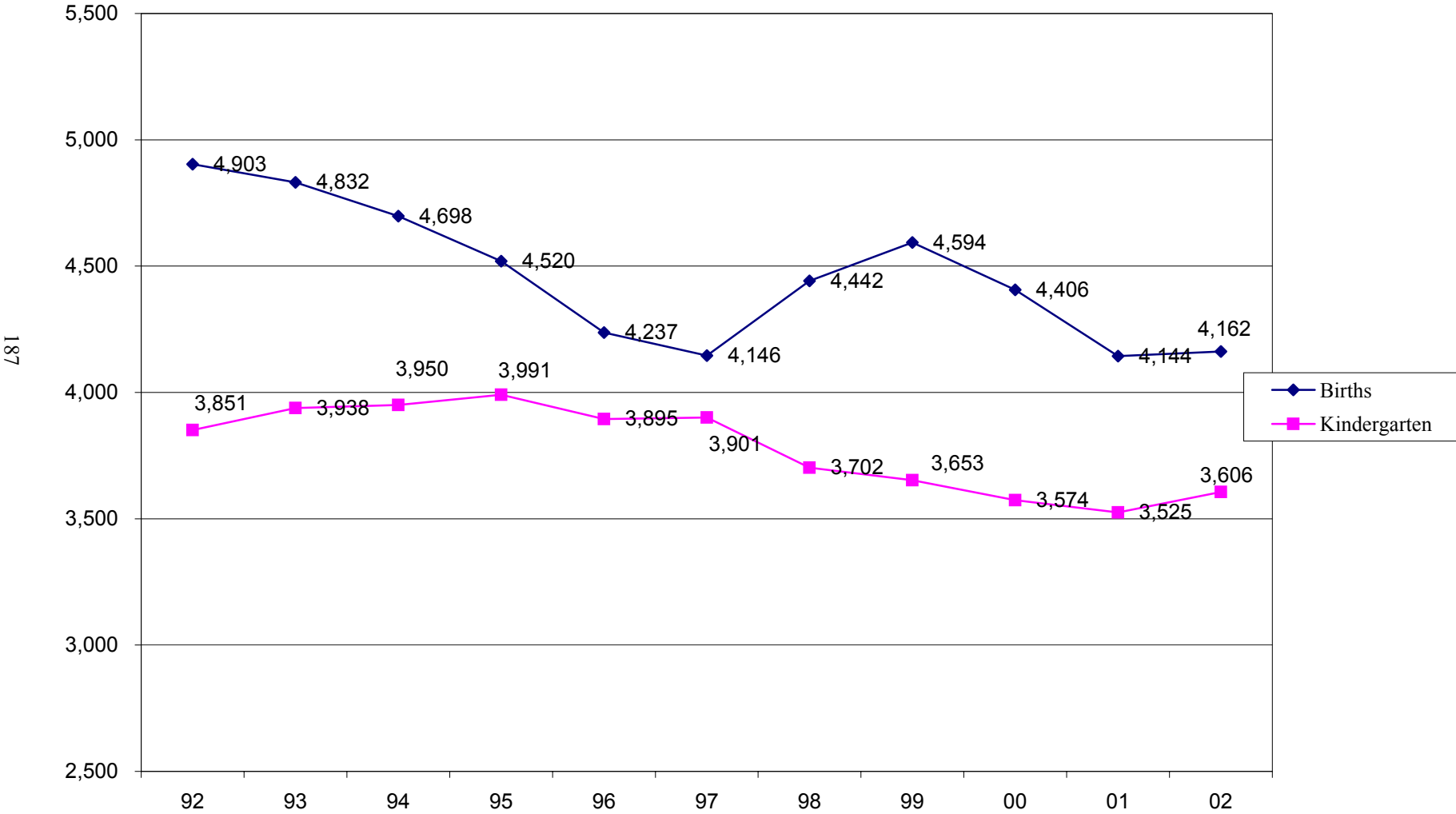
Grades K-12 Membership September 30, 2002



Note: Special Services membership not included in grade levels, but level 3 special education is included .

Chart 3

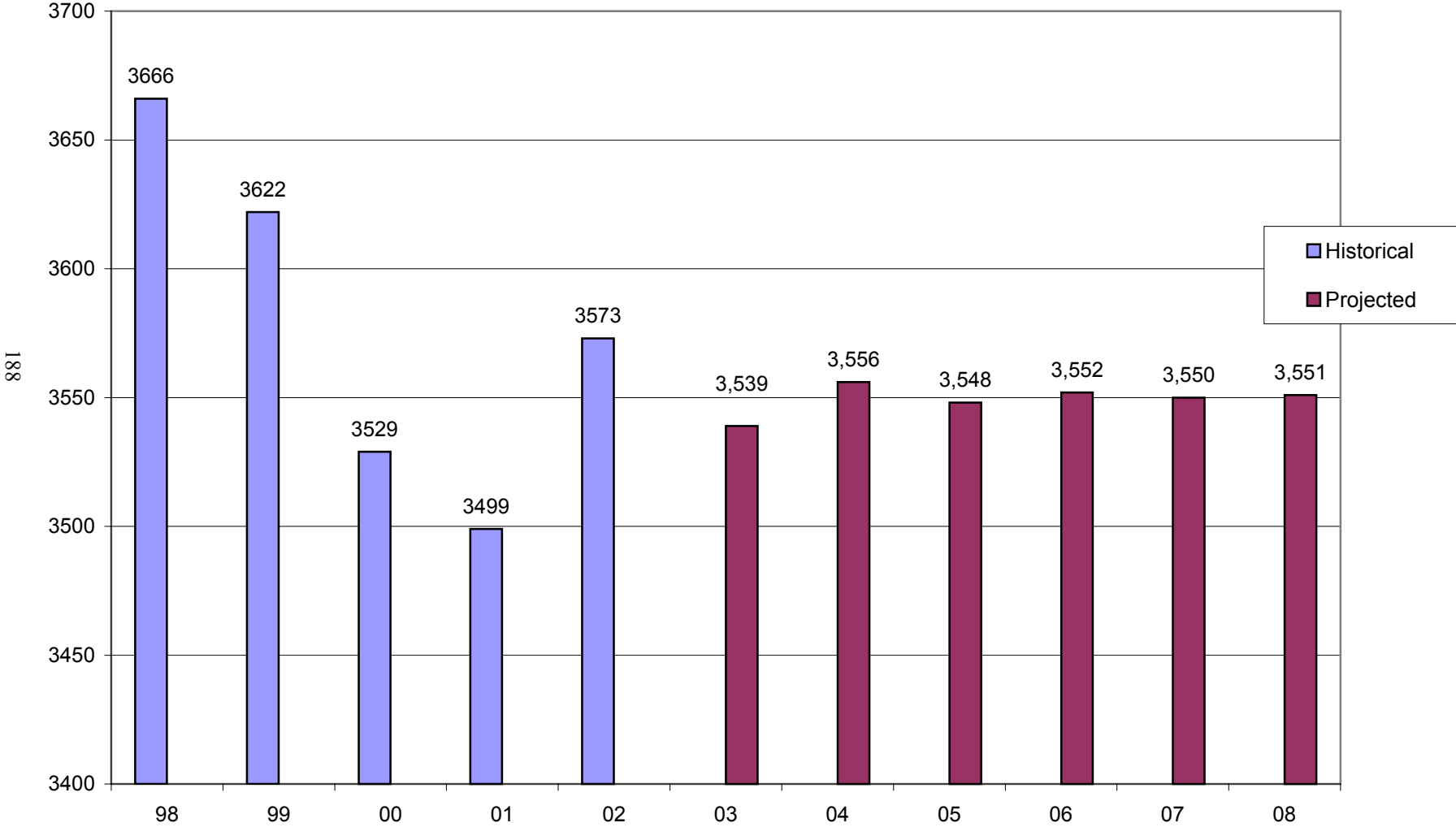
Ten Year History of Births and Kindergarten Enrollment



Note: Numbers include level 3 special ed students.

Chart 4

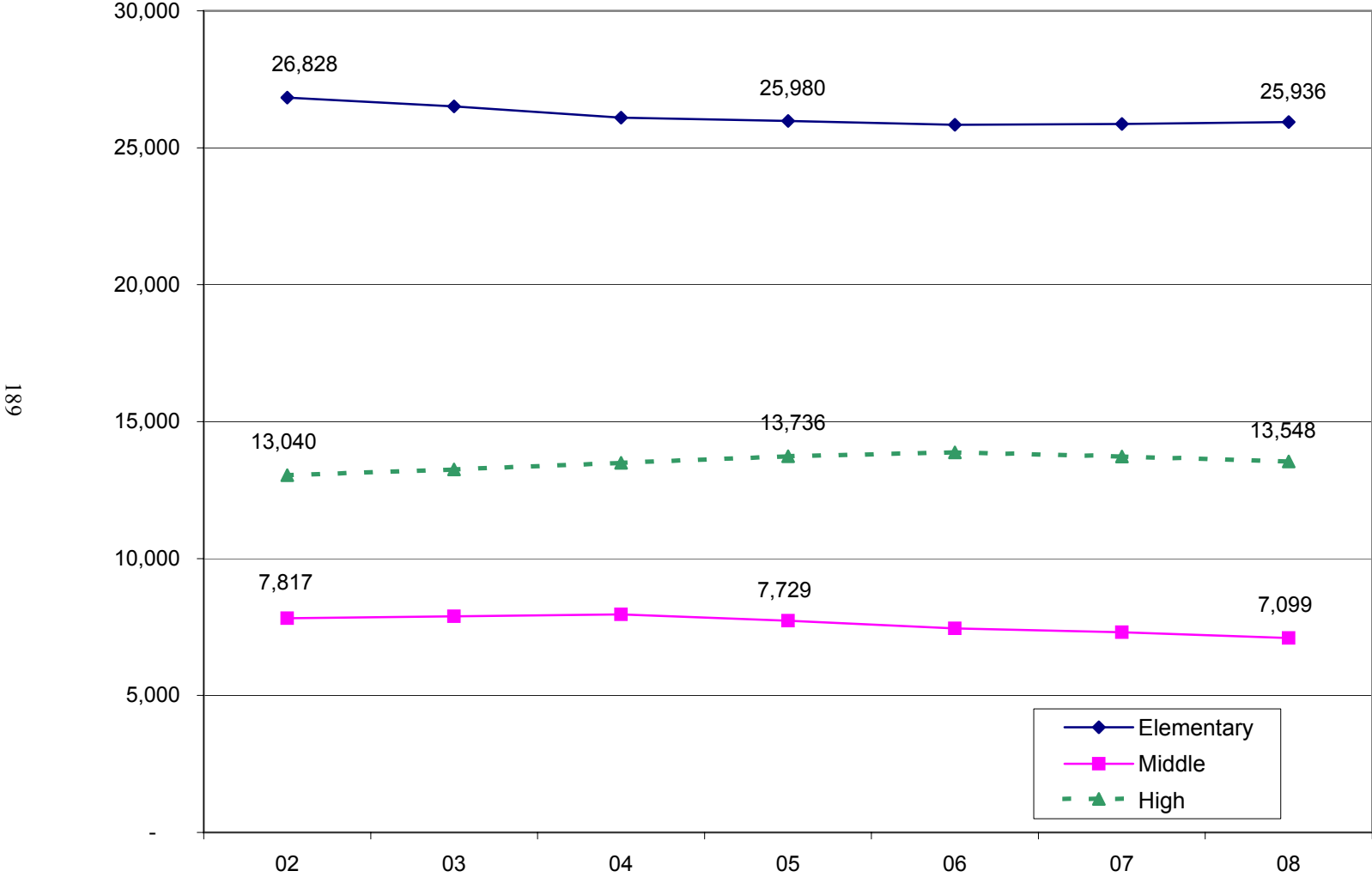
Kindergarten Enrollment



Note: Numbers do not include level 3 special ed students.

Chart 5

Elementary, Middle, And High School Membership Projections



Note: Numbers include level 3 special ed students, but does not include preschool students.

Chart 6

Projected Total Membership 2002-2008

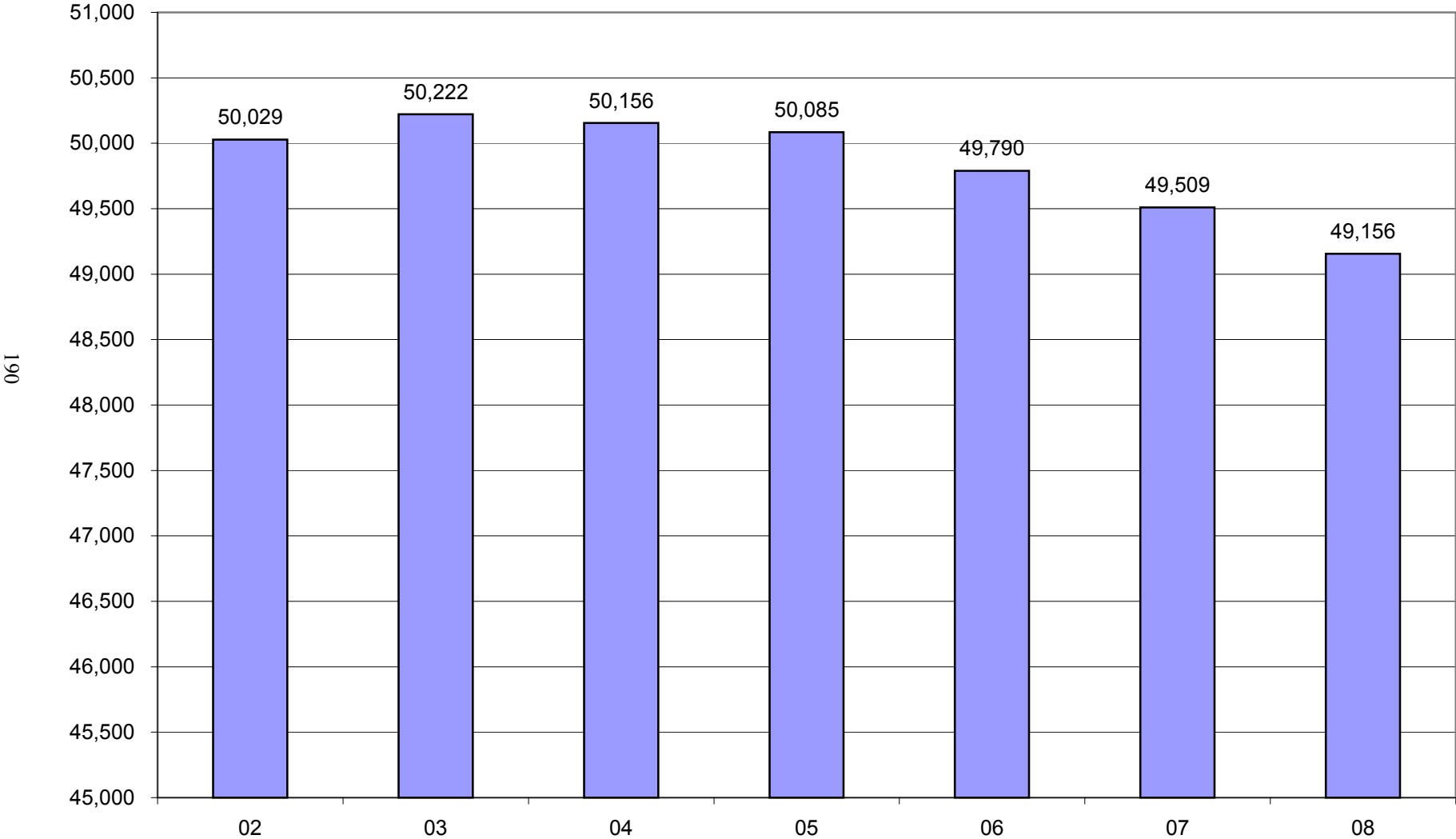


Chart 7

White and Ethnic Minority Populations Membership History

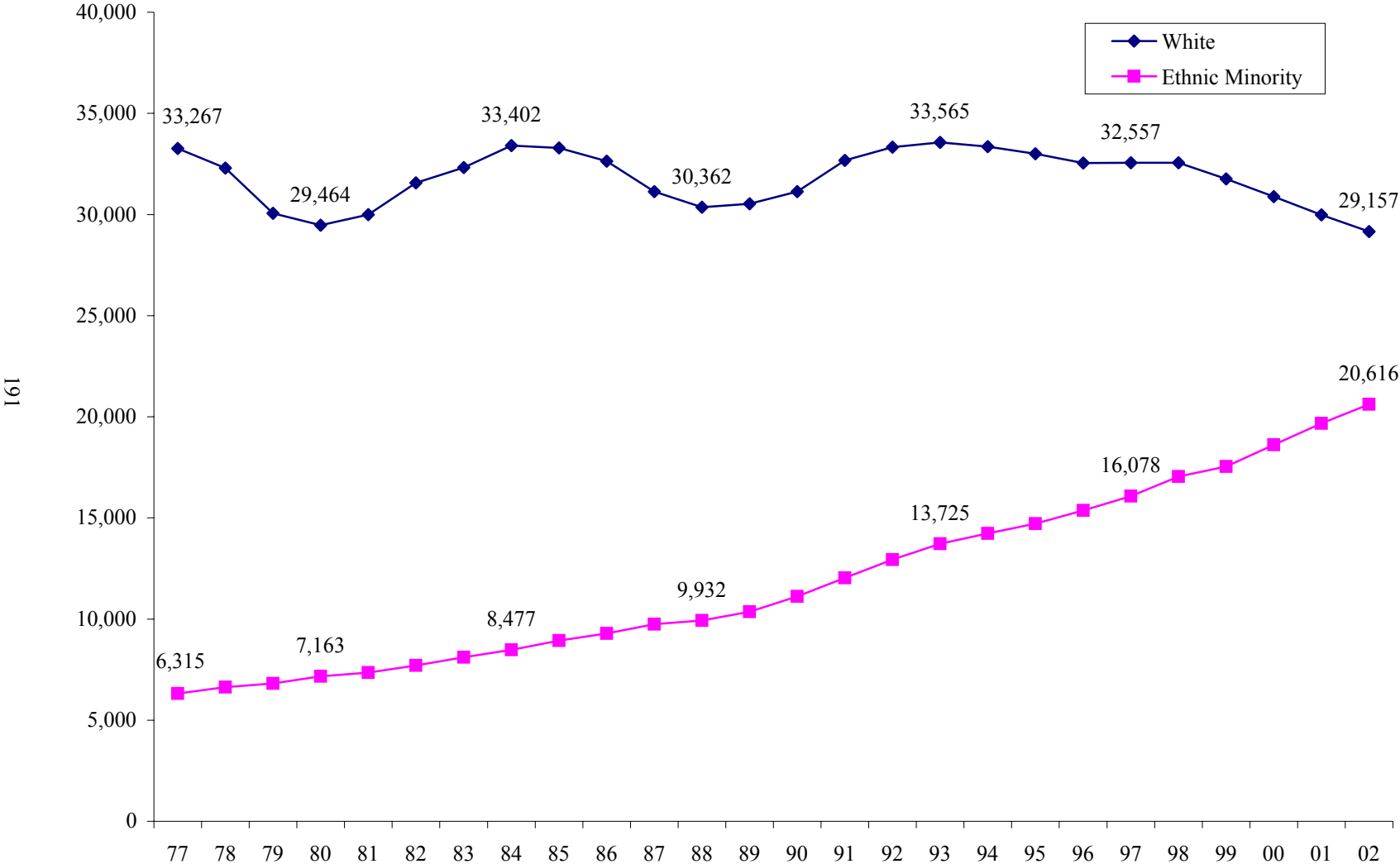


Chart 8

Student Mobility 2001-02

