

ANCHORAGE SCHOOL DISTRICT
ANCHORAGE, ALASKA

ASD MEMORANDUM #133 (2010-2011)

December 6, 2010

TO: SCHOOL BOARD

FROM: OFFICE OF THE SUPERINTENDENT

SUBJECT: 2010-2011 ETHNICITY REPORT

ASD Goal: *All ASD departments support the mission of the District and will be highly effective, efficient, and responsive to internal and external customers.*

PERTINENT FACTS:

Today 53% of the students in the Anchorage School District are ethnically diverse, compared to 13% in 1976. Of today's diverse population, the Asian/Pacific Islander category (15%) is the largest, followed by the multi-ethnic (13%), Hispanic (10%), Alaska Native/American Indian (9%), and African American/Black (6%) groups – see Chart 1 in the attached Ethnicity Report. The following table compares ethnicity percentages for 2009-10 and 2010-11:

Percent Race/Ethnicity Comparison: 2009-10 and 2010-11

Race/Ethnicity	2009-10	2010-11
White	48%	47%
African American or Black	6%	6%
Alaska Native or American Indian	9%	9%
Asian or Pacific Islander	14%	15%
Hispanic	10%	10%
Multi-Ethnic	13%	13%
Total Ethnically Diverse	52%	53%

Comparing 2009 and 2010, the ethnically diverse student population has increased by 1% and the White student population has decreased by 1%. These changes are shown in the Historical Student Membership Composition graph (Chart 2). Looking at student numbers, the White student group decreased by 615 students this year when compared to last year, while the ethnically diverse group increased by 195 students. The largest numerical gain in an ethnic category this year, over last year, was in Asian/Pacific Islander, which increased by 149 students.

It should be noted that in 2007 all students and staff were asked to re-identify themselves, racially, using the new categories developed, and required, by the federal government. Students were asked to do two things: 1) identify whether or not they were Hispanic, and 2) to select the categories which described their race/ethnicity (more than one could be selected). This is very different from what was allowed in the past. Prior to 2007, students were given a list of racial/ethnic categories and allowed to choose the one which best described their race/ethnicity.

Guidance from the Alaska Department of Education and Early Development was used to interpret responses to the two questions. Students who indicated they were Hispanic were given that as their racial/ethnic category. Students who made more than one selection were placed in the multi-ethnic category. Students who selected one category were placed in that particular racial/ethnic category.

While the new method of identification is welcomed as a means of accurately describing ethnicity, the way it is reported can have some negative impacts. For instance, numbers in the new categories can show under-representation of some groups. Decisions based on numbers in the new categories can be flawed. In addition, numbers can be misinterpreted if compared to prior years.

Chart 3 shows student ethnicity or race by program type. At 58%, Special Services program has the largest population of ethnically diverse students, followed by Middle School students at 56%, 55% of Elementary School, 50% of High School, 43% of Alternative school, and 34% of Charter school programs. The diversity at the secondary levels continues to increase as the more diverse elementary students move into these levels. Last year Elementary schools had the second highest level of ethnically diverse students at 55%. Chart 4 shows the trend of ethnic diversity by program type.

The attached Ethnicity Report lists student information in summary, by program type, and by school. The series of tables and graphs represent membership numbers as of October 29, 2010.

Attachment

CC/MKA/RA/ODS

Prepared by: Ophelia Dargan-Steed, Demographics Manager
Ray Amsden, Director of Facilities

Approved by: Michael K. Abbott, Assistant Superintendent of Support
Services

Anchorage School District

Ethnicity Report
October 29, 2010

School Year	White	African American or Black	Alaska Native or American Indian	Asian or Pacific Islander	Hispanic	Multi- Ethnic	Total Diverse	School Totals
2000 - 01	30,886 64%	4,227 9%	6,177 13%	4,760 10%	2,754 6%	695 1%	18,613 38%	49,499
2001 - 02	29,978 60%	4,234 9%	6,267 13%	5,038 10%	2,897 6%	1,241 2%	19,677 40%	49,655
2002 - 03	29,157 59%	4,196 8%	6,366 13%	5,311 11%	3,041 6%	1,702 3%	20,616 41%	49,773
2003 - 04	28,468 57%	4,057 8%	6,524 13%	5,335 11%	3,050 6%	2,124 4%	21,090 43%	49,558
2004 - 05	27,764 56%	3,930 8%	6,520 13%	5,385 11%	3,107 6%	2,773 6%	21,715 44%	49,479
2005 - 06	27,212 55%	3,836 8%	6,537 13%	5,458 11%	3,169 6%	3,334 7%	22,334 45%	49,546
2006 - 07	26,294 54%	3,655 7%	6,600 13%	5,484 11%	3,077 6%	3,876 8%	22,692 46%	48,986
2007 - 08	24,185 50%	2,974 6%	4,288 9%	5,868 12%	4,961 10%	6,144 13%	24,235 50%	48,420
2008 - 09	23,864 49%	2,914 6%	4,168 9%	6,289 13%	4,927 10%	6,254 13%	24,552 51%	48,416

Anchorage School District

Ethnicity Report
October 29, 2010

School Year	White	African American or Black	Alaska Native or American Indian	Asian or Pacific Islander	Hispanic	Multi-Ethnic	Total Diverse	School Totals
2009 - 10	23,775 48%	3,100 6%	4,440 9%	7,002 14%	4,867 10%	6,196 13%	25,605 52%	49,380
2010 - 11	23,160 47%	3,164 6%	4,326 9%	7,151 15%	4,983 10%	6,176 13%	25,800 53%	48,960
Change 2009 => 2010	-615	64	-114	149	116	-20	195	-420
Change 2000 => 2010	-7,726	-1,063	-1,851	2,391	2,229	5,481	7,187	-539
Percent Change Last Ten Years	-25%	-25%	-30%	50%	81%		39%	-1%

Note: 1) Report does not include non-special education preschool students.
 2) In the 2005-06 school year the ethnic/racial category "Other" was changed to "Multi-Ethnic."
 3) In the 2007-08 school year the ethnic/racial categories were redefined by the federal government.

Anchorage School District

Ethnicity Report
October 29, 2010

Type of Program	White	African American or Black	Alaska Native or American Indian	Asian or Pacific Islander	Hispanic	Multi-Ethnic	Total Diverse	School Totals
ELEMENTARY	10,831 45%	1,565 6%	2,179 9%	3,607 15%	2,633 11%	3,459 14%	13,443 55%	24,274
MIDDLE SCHOOL	3,333 44%	555 7%	687 9%	1,244 17%	783 10%	911 12%	4,180 56%	7,513
HIGH SCHOOL	6,340 50%	839 7%	980 8%	2,057 16%	1,225 10%	1,314 10%	6,415 50%	12,755
ALTERNATIVE	823 55%	90 6%	134 9%	145 10%	128 9%	172 12%	669 45%	1,492
CHARTER	1,598 67%	77 3%	224 9%	67 3%	162 7%	242 10%	772 33%	2,370
SPECIAL SERVICES	235 42%	38 7%	122 22%	31 6%	52 9%	78 14%	321 58%	556
DISTRICT TOTALS	23,160 47%	3,164 6%	4,326 9%	7,151 15%	4,983 10%	6,176 13%	25,800 53%	48,960

Anchorage School District

Ethnicity Report
October 29, 2010

School	Alaska						Multi-Ethnic	Total Diverse	Total
	White	African American or Black	Native or American Indian	Asian or Pacific Islander	Hispanic				
100 Abbott Loop	95 24%	26 7%	40 10%	92 23%	50 13%	92 23%	300 76%	395	
110 Airport Heights	47 14%	30 9%	58 18%	79 24%	53 16%	60 18%	280 86%	327	
112 Alpenglow	404 73%	27 5%	6 1%	8 1%	59 11%	48 9%	148 27%	552	
114 Aurora	275 67%	45 11%	3 1%	11 3%	50 12%	28 7%	137 33%	412	
115 Baxter	151 40%	31 8%	40 11%	41 11%	41 11%	72 19%	225 60%	376	
116 Bayshore	272 51%	17 3%	24 5%	102 19%	41 8%	76 14%	260 49%	532	
118 Bear Valley	327 75%	7 2%	20 5%	21 5%	20 5%	39 9%	107 25%	434	
120 Birchwood ABC	257 77%	7 2%	23 7%	4 1%	22 7%	19 6%	75 23%	332	
125 Bowman	274 59%	9 2%	44 9%	31 7%	40 9%	68 15%	192 41%	466	
130 Campbell	160 39%	16 4%	39 9%	72 17%	56 13%	72 17%	255 61%	415	

Anchorage School District

Ethnicity Report
October 29, 2010

		Alaska							
		African	Native or	Asian or			Multi-	Total	
School	White	American	American	Pacific	Hispanic	Ethnic	Diverse	Total	
		or Black	Indian	Islander					
140	Chester Valley	75 36%	11 5%	16 8%	27 13%	21 10%	56 27%	131 64%	206
150	Chinook	166 31%	26 5%	93 17%	125 23%	50 9%	75 14%	369 69%	535
160	Chugach Optional	208 82%	1 0%	4 2%	9 4%	12 5%	20 8%	46 18%	254
170	Chugiak	312 72%	4 1%	25 6%	10 2%	42 10%	38 9%	119 28%	431
174	College Gate	118 31%	38 10%	46 12%	62 16%	37 10%	76 20%	259 69%	377
180	Creekside Park	101 24%	58 14%	29 7%	98 23%	61 15%	71 17%	317 76%	418
190	Denali Montessori	228 56%	30 7%	34 8%	32 8%	27 7%	56 14%	179 44%	407
200	Eagle River	229 62%	6 2%	29 8%	7 2%	34 9%	64 17%	140 38%	369
210	Fairview	51 11%	132 30%	38 9%	143 32%	47 11%	35 8%	395 89%	446
215	Fire Lake	203 59%	4 1%	31 9%	26 7%	29 8%	54 16%	144 41%	347

Anchorage School District

Ethnicity Report
October 29, 2010

School	White	Alaska					Multi-Ethnic	Total Diverse	Total
		African American or Black	Native or American Indian	Asian or Pacific Islander	Hispanic				
220	Girdwood K-8	148 90%	0%	3 2%	5 3%	5 3%	4 2%	17 10%	165
418	Gladys Wood	185 42%	26 6%	57 13%	58 13%	43 10%	68 16%	252 58%	437
230	Government Hill	104 21%	19 4%	22 5%	65 13%	231 48%	45 9%	382 79%	486
235	Homestead	231 74%	4 1%	20 6%	11 4%	14 4%	34 11%	83 26%	314
237	Huffman	272 72%	10 3%	21 6%	22 6%	19 5%	34 9%	106 28%	378
240	Inlet View	125 55%	12 5%	17 7%	20 9%	22 10%	32 14%	103 45%	228
242	Kasuun	205 46%	15 3%	36 8%	57 13%	52 12%	78 18%	238 54%	443
246	Kincaid	325 64%	12 2%	42 8%	39 8%	21 4%	68 13%	182 36%	507
245	Klatt	117 34%	7 2%	39 11%	75 22%	66 19%	44 13%	231 66%	348
248	Lake Hood	117 28%	12 3%	45 11%	123 30%	52 13%	67 16%	299 72%	416

Anchorage School District

Ethnicity Report
October 29, 2010

School	Alaska						Multi-Ethnic	Total Diverse	Total
	White	African American or Black	Native or American Indian	Asian or Pacific Islander	Hispanic				
250	Lake Otis	91 23%	32 8%	94 23%	74 18%	52 13%	59 15%	311 77%	402
257	Mt. Spurr	205 69%	23 8%	0 0%	9 3%	28 9%	31 10%	91 31%	296
260	Mountain View	45 12%	51 13%	58 15%	136 35%	39 10%	57 15%	341 88%	386
270	Muldoon	82 19%	48 11%	57 13%	152 35%	31 7%	67 15%	355 81%	437
280	North Star	87 22%	27 7%	52 13%	112 29%	55 14%	58 15%	304 78%	391
290	Northern Lights ABC	305 49%	22 4%	21 3%	140 23%	49 8%	83 13%	315 51%	620
300	Northwood ABC	117 32%	18 5%	48 13%	76 21%	46 13%	60 16%	248 68%	365
310	Nunaka Valley	80 30%	28 10%	51 19%	24 9%	18 7%	67 25%	188 70%	268
315	Ocean View	251 55%	15 3%	47 10%	25 5%	36 8%	81 18%	204 45%	455
320	O'Malley	253 82%	3 1%	16 5%	4 1%	9 3%	25 8%	57 18%	310

Anchorage School District

Ethnicity Report
October 29, 2010

		Alaska							
School	White	African American or Black	Native or American Indian	Asian or Pacific Islander	Hispanic	Multi- Ethnic	Total Diverse	Total	
324	Orion	312 69%	50 11%	1 0%	13 3%	52 11%	26 6%	142 31%	454
328	Ptarmigan	108 24%	49 11%	70 16%	70 16%	61 14%	88 20%	338 76%	446
330	Rabbit Creek	286 67%	4 1%	44 10%	21 5%	31 7%	39 9%	139 33%	425
335	Ravenwood	330 77%	2 0%	17 4%	10 2%	41 10%	27 6%	97 23%	427
340	Rogers Park	249 48%	19 4%	46 9%	73 14%	39 8%	91 18%	268 52%	517
345	Russian Jack	55 15%	44 12%	58 16%	81 22%	59 16%	75 20%	317 85%	372
350	Sand Lake	338 48%	11 2%	62 9%	122 17%	45 6%	129 18%	369 52%	707
360	Scenic Park	150 39%	43 11%	21 5%	58 15%	34 9%	81 21%	237 61%	387
362	Spring Hill	110 33%	12 4%	43 13%	58 17%	56 17%	56 17%	225 67%	335
364	Susitna	183 39%	37 8%	39 8%	76 16%	36 8%	94 20%	282 61%	465

Anchorage School District

Ethnicity Report
October 29, 2010

School	Alaska						Multi-Ethnic	Total Diverse	Total
	White	African American or Black	Native or American Indian	Asian or Pacific Islander	Hispanic				
365	Taku	106 27%	24 6%	50 13%	84 21%	54 14%	74 19%	286 73%	392
363	Trailside	266 56%	22 5%	43 9%	43 9%	37 8%	66 14%	211 44%	477
370	Tudor	106 30%	23 7%	35 10%	64 18%	69 20%	55 16%	246 70%	352
380	Turnagain	270 59%	7 2%	36 8%	41 9%	24 5%	82 18%	190 41%	460
384	Tyson	36 7%	71 14%	55 11%	203 41%	55 11%	73 15%	457 93%	493
386	Ursa Major	255 54%	92 19%	18 4%	9 2%	74 16%	26 5%	219 46%	474
388	Ursa Minor	179 58%	52 17%	5 2%	16 5%	35 11%	19 6%	127 42%	306
390	Williwaw	38 10%	36 10%	30 8%	173 47%	35 10%	53 15%	327 90%	365
400	Willow Crest	95 22%	23 5%	72 17%	102 24%	73 17%	63 15%	333 78%	428
410	Wonder Park	61 20%	35 11%	46 15%	63 20%	43 14%	61 20%	248 80%	309

Anchorage School District

Ethnicity Report
October 29, 2010

School	White	African American or Black	Alaska Native or American Indian	Asian or Pacific Islander	Hispanic	Multi- Ethnic	Total Diverse	Total
Total Elementary Schools	10,831 45%	1,565 6%	2,179 9%	3,607 15%	2,633 11%	3,459 14%	13,443 55%	24,274

Anchorage School District

Ethnicity Report
October 29, 2010

School	White	African American or Black	Alaska Native or American Indian	Asian or Pacific Islander	Hispanic	Multi-Ethnic	Total Diverse	Total
785 Begich Middle School	298 30%	116 12%	125 13%	207 21%	88 9%	161 16%	697 70%	995
700 Central Middle School of Science	270 46%	53 9%	47 8%	99 17%	55 9%	58 10%	312 54%	582
710 Clark Middle School	138 13%	155 14%	139 13%	382 35%	139 13%	146 13%	961 87%	1,099
780 Goldenview Middle School	568 72%	14 2%	35 4%	51 7%	55 7%	61 8%	216 28%	784
730 Gruening Middle School	368 65%	61 11%	17 3%	20 4%	61 11%	38 7%	197 35%	565
740 Hanshew Middle School	323 43%	34 5%	73 10%	119 16%	95 13%	109 14%	430 57%	753
750 Mears Middle School	402 50%	28 3%	77 10%	116 14%	73 9%	111 14%	405 50%	807
755 Mirror Lake Middle School	490 74%	9 1%	35 5%	29 4%	44 7%	52 8%	169 26%	659
760 Romig Middle School	298 40%	44 6%	75 10%	127 17%	108 15%	84 11%	438 60%	736

Anchorage School District

Ethnicity Report
 October 29, 2010

School	White	African American or Black	Alaska Native or American Indian	Asian or Pacific Islander	Hispanic	Multi-Ethnic	Total Diverse	Total
770 Wendler Middle School	178 33%	41 8%	64 12%	94 18%	65 12%	91 17%	355 67%	533
Total Middle Schools	3,333 44%	555 7%	687 9%	1,244 17%	783 10%	911 12%	4,180 56%	7,513

Anchorage School District

Ethnicity Report
October 29, 2010

School	White	African American or Black	Alaska Native or American Indian	Asian or Pacific Islander	Hispanic	Multi-Ethnic	Total Diverse	Total
800 Bartlett High School	569 35%	191 12%	157 10%	312 19%	143 9%	246 15%	1,049 65%	1,618
810 Chugiak High School	928 76%	22 2%	76 6%	33 3%	69 6%	93 8%	293 24%	1,221
820 Dimond High School	963 54%	57 3%	122 7%	282 16%	155 9%	196 11%	812 46%	1,775
865 Eagle River High School	599 68%	74 8%	24 3%	28 3%	86 10%	72 8%	284 32%	883
830 East High School	583 27%	245 11%	190 9%	663 31%	239 11%	243 11%	1,580 73%	2,163
840 Service High School	892 50%	90 5%	167 9%	243 14%	183 10%	196 11%	879 50%	1,771
860 South High School	1112 73%	30 2%	72 5%	121 8%	108 7%	77 5%	408 27%	1,520
850 West High School	694 38%	130 7%	172 10%	375 21%	242 13%	191 11%	1,110 62%	1,804
Total High Schools	6,340 50%	839 7%	980 8%	2,057 16%	1,225 10%	1,314 10%	6,415 50%	12,755

Anchorage School District

Ethnicity Report
October 29, 2010

School	White	African American or Black	Alaska Native or American Indian	Asian or Pacific Islander	Hispanic	Multi-Ethnic	Total Diverse	Total
885 AVAIL	15 21%	8 11%	15 21%	12 16%	7 10%	16 22%	58 79%	73
880 Benson Secondary/SEARCH	93 35%	29 11%	30 11%	48 18%	32 12%	35 13%	174 65%	267
884 Continuation Program	16 41%	4 10%	7 18%	2 5%	5 13%	5 13%	23 59%	39
815 Crossroads	12 26%	2 4%	5 11%	10 21%	9 19%	9 19%	35 74%	47
875 McLaughlin School	33 29%	18 16%	31 28%	6 5%	6 5%	18 16%	79 71%	112
450 Polaris K-12	361 76%	7 1%	21 4%	17 4%	27 6%	40 8%	112 24%	473
835 SAVE	87 41%	16 7%	16 7%	34 16%	31 14%	30 14%	127 59%	214
845 Steller Secondary	206 77%	6 2%	9 3%	16 6%	11 4%	19 7%	61 23%	267
Total Alternative Schools	823 55%	90 6%	134 9%	145 10%	128 9%	172 12%	669 45%	1,492

Anchorage School District

Ethnicity Report
October 29, 2010

School	White	African American or Black	Alaska Native or American Indian	Asian or Pacific Islander	Hispanic	Multi-Ethnic	Total Diverse	Total
506 Alaska Native Cultural Charter	12 6%	3 2%	120 62%	0%	10 5%	50 26%	183 94%	195
510 Aquarian Charter School	256 69%	15 4%	14 4%	18 5%	30 8%	39 10%	116 31%	372
530 Eagle Academy Charter School	126 77%	8 5%	1 1%	2 1%	14 9%	13 8%	38 23%	164
540 Family Partnership Charter Schol	400 71%	22 4%	35 6%	19 3%	40 7%	47 8%	163 29%	563
545 Frontier Charter School	255 78%	15 5%	12 4%	6 2%	16 5%	23 7%	72 22%	327
550 Highland Tech High School	144 62%	8 3%	23 10%	12 5%	17 7%	28 12%	88 38%	232
560 Rilke Schule German School	258 82%	1 0%	7 2%	8 3%	14 4%	27 9%	57 18%	315
595 Winterberry Charter School	147 73%	5 2%	12 6%	2 1%	21 10%	15 7%	55 27%	202
Total Charter Schools	1,598 67%	77 3%	224 9%	67 3%	162 7%	242 10%	772 33%	2,370

Anchorage School District

Ethnicity Report
October 29, 2010

School	White	African American or Black	Alaska Native or American Indian	Asian or Pacific Islander	Hispanic	Multi-Ethnic	Total Diverse	Total
667 ACE/ACT	72 55%	10 8%	18 14%	12 9%	9 7%	9 7%	58 45%	130
603 ASSDHH	19 43%	2 5%	8 18%	4 9%	8 18%	3 7%	25 57%	44
616 Booth Secondary	1 25%	0 0%	3 75%	0 0%	0 0%	0 0%	3 75%	4
633 Bragaw Heights	5 33%	0 0%	9 60%	1 7%	0 0%	0 0%	10 67%	15
631 DeBarr Heights	15 38%	2 5%	13 33%	0 0%	3 8%	6 15%	24 62%	39
661 Early Intervention Services	37 45%	3 4%	12 15%	3 4%	10 12%	17 21%	45 55%	82
635 Humphrey Heights	7 70%	0 0%	1 10%	0 0%	1 10%	1 10%	3 30%	10
650 Jesse Lee	5 31%	0 0%	8 50%	0 0%	1 6%	2 13%	11 69%	16
617 Maplewood	2 20%	1 10%	4 40%	0 0%	1 10%	2 20%	8 80%	10

Anchorage School District

Ethnicity Report
October 29, 2010

School	White	African American or Black	Alaska Native or American Indian	Asian or Pacific Islander	Hispanic	Multi-Ethnic	Total Diverse	Total
618 McKinley Heights	8 53%	0 0%	2 13%	1 7%	1 7%	3 20%	7 47%	15
663 Mt. Iliamna	22 41%	4 7%	4 7%	4 7%	9 17%	11 20%	32 59%	54
910 Outreach / Private	3 30%	1 10%	2 20%	1 10%	0 0%	3 30%	7 70%	10
630 Providence Heights	1 20%	0 0%	3 60%	1 20%	0 0%	0 0%	4 80%	5
606 Turning Points Heights	18 46%	1 3%	11 28%	0 0%	3 8%	6 15%	21 54%	39
625 Whaley School	20 24%	14 17%	24 29%	4 5%	6 7%	15 18%	63 76%	83
Total Special Services	235 42%	38 7%	122 22%	31 6%	52 9%	78 14%	321 58%	556

Chart 1
Anchorage School District
October 29, 2010
STUDENT MEMBERSHIP ETHNIC COMPOSITION

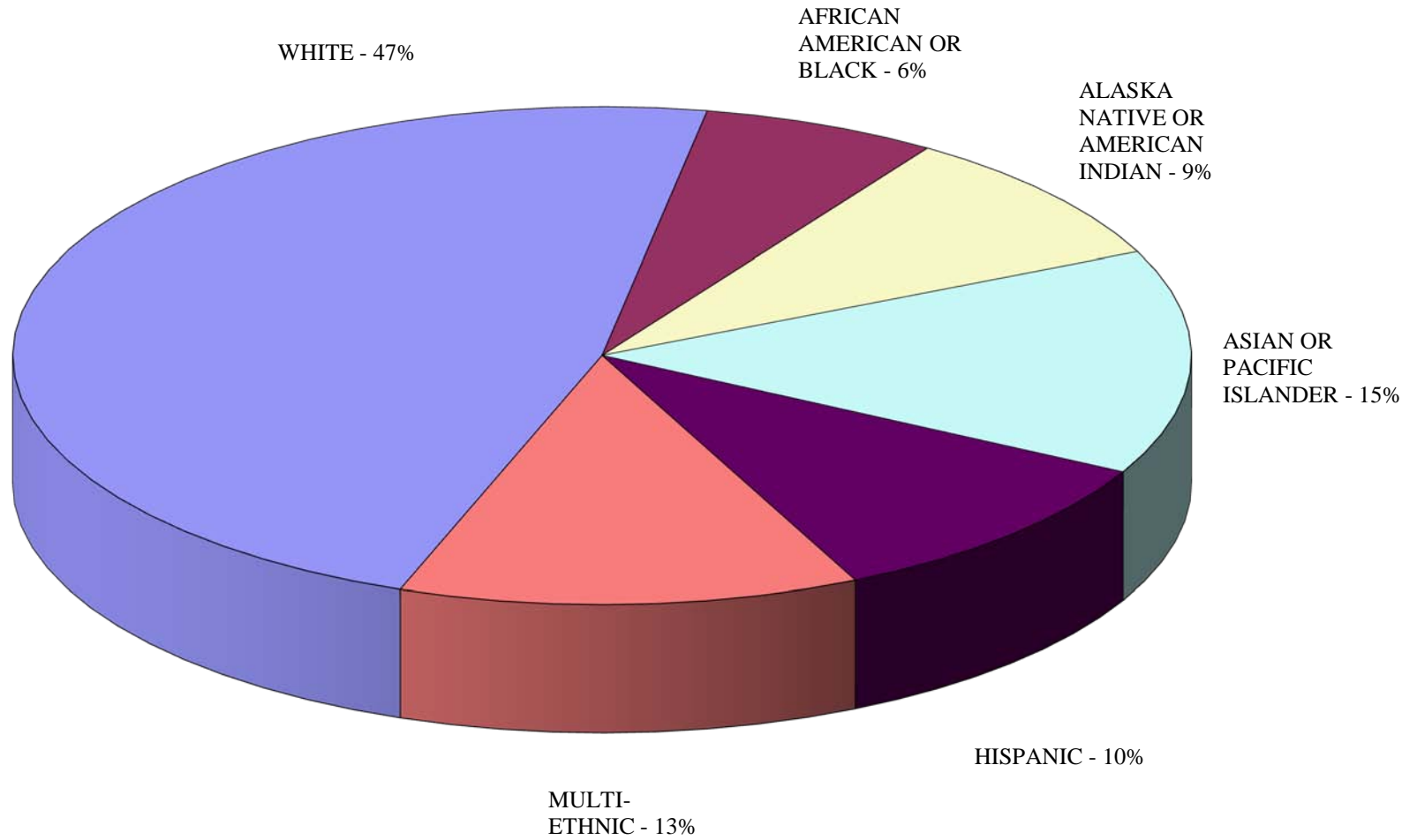


Chart 2
Anchorage School District
October 29, 2010
HISTORICAL STUDENT MEMBERSHIP COMPOSITION

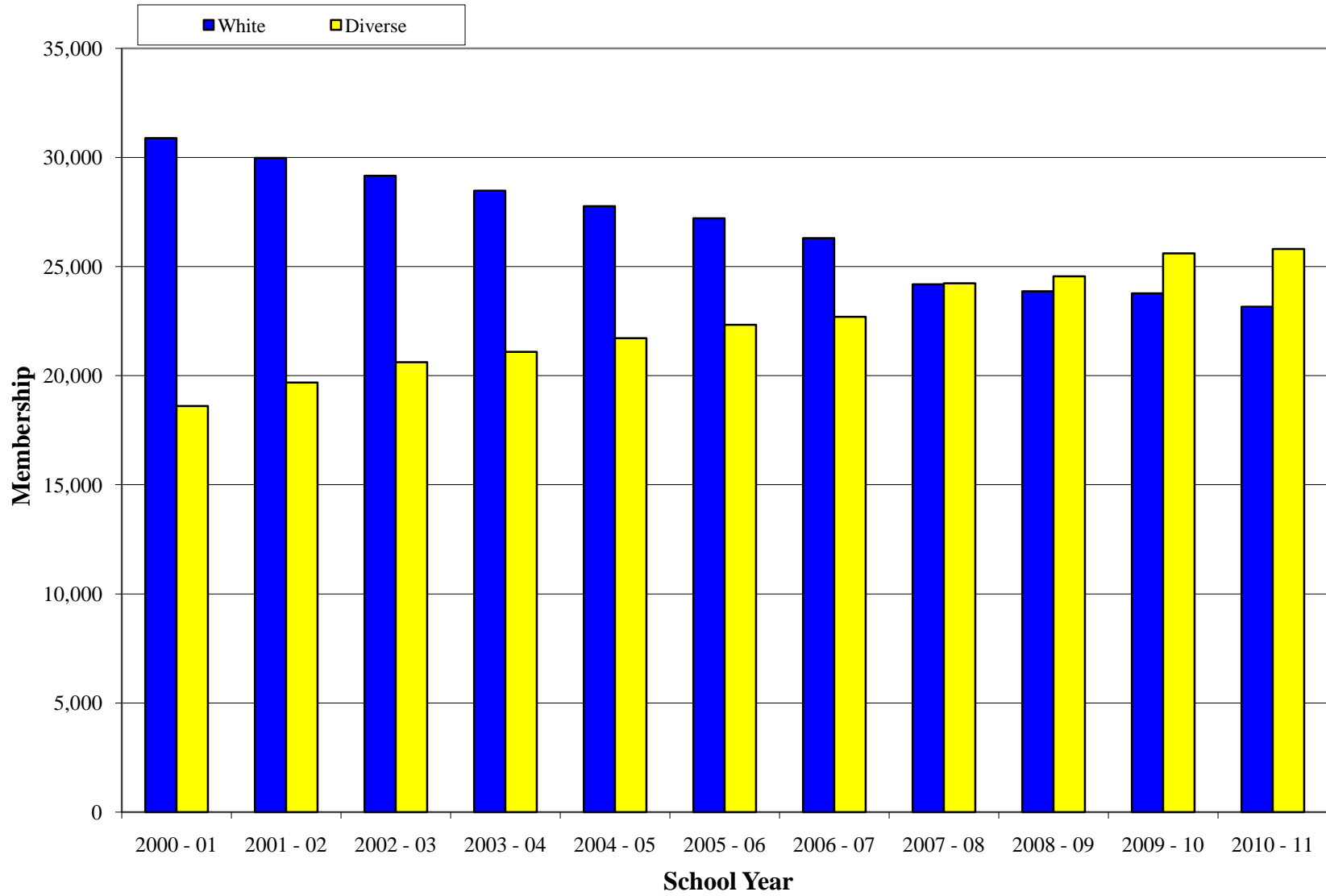


Chart 3
Anchorage School District
October 29, 2010
ETHNICITY/RACE BY PROGRAM TYPE

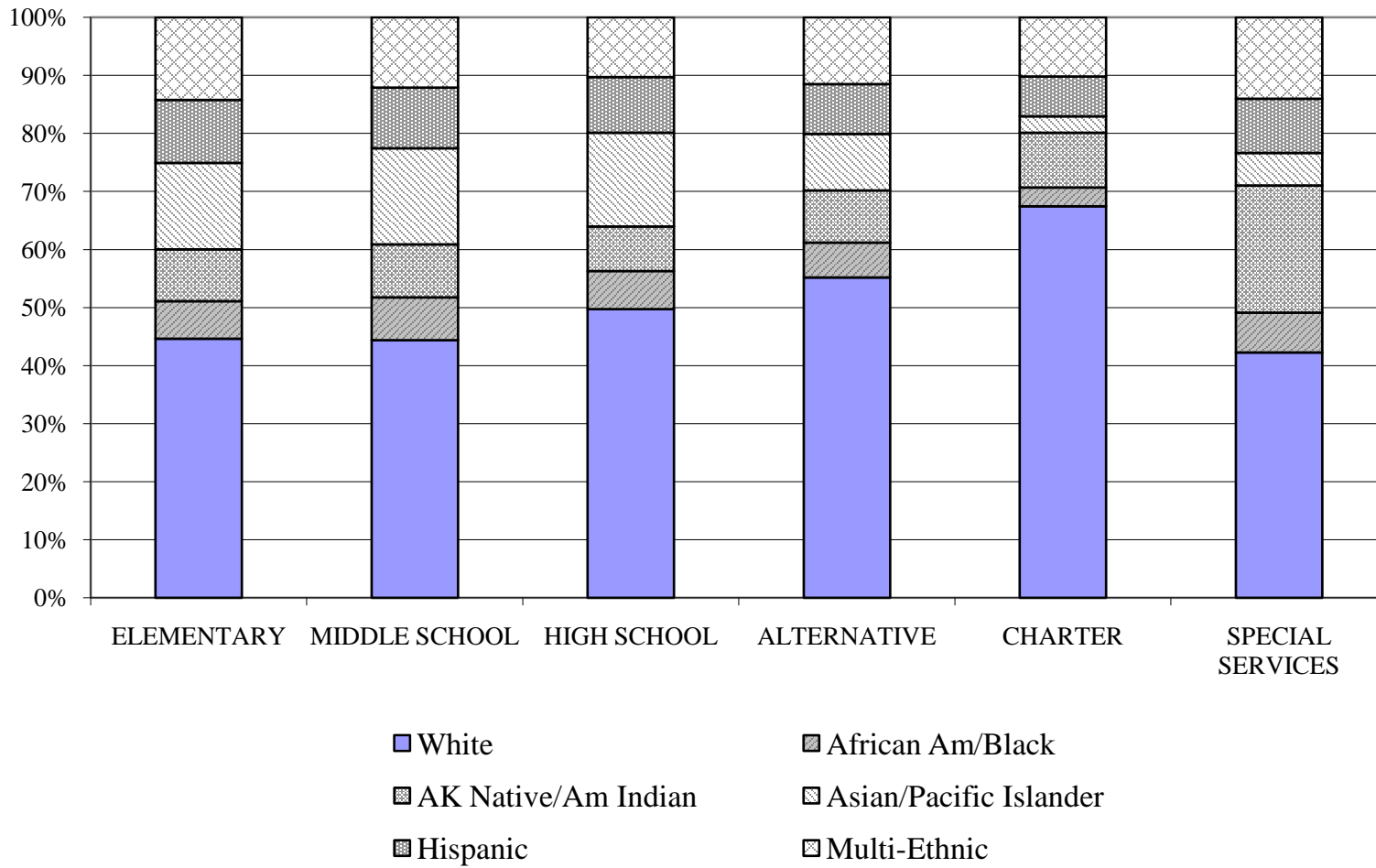


Chart 4
Anchorage School District
October 29, 2010

PERCENT ETHNIC DIVERSITY TREND BY PROGRAM TYPE

