



**Anchorage School District**

*Educating All Students for Success in Life*

# Zangle Parent Connect User Guide

Anchorage School District

# Table of Contents

How to Access ParentConnection .....	2
Welcome Parents! .....	2
Computer Requirements .....	2
Finding ParentConnection & logging in .....	2
Changing Your password .....	3
At First Login.....	3
Using ParentConnection.....	4
Accessing a Student .....	4
Accessing the Various Information Available.....	4

## How to Access ParentConnection

### Welcome Parents!

This job aid will help you find and log into ParentConnection, and step you through some of the features that make ParentConnection a great way to track you child's progress and help them continue to excel at school.

### Computer Requirements

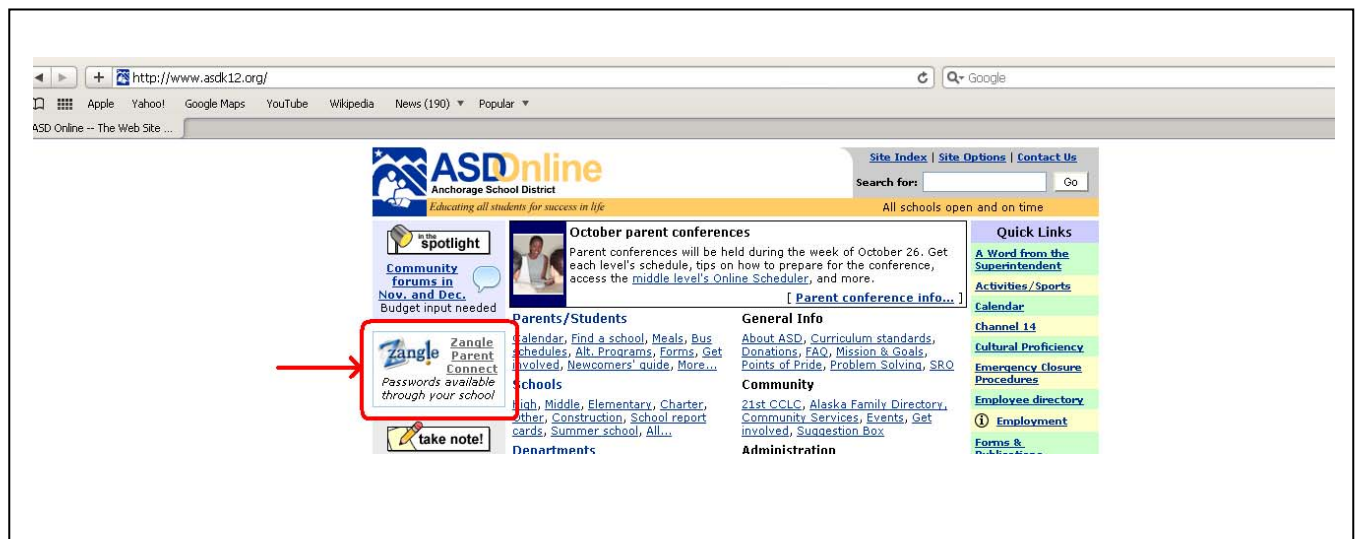
You can get to ParentConnection with the following computer and software:

- A Windows computer running XP, Vista or Windows 7, or an Apple running Mac OS 10.2 or above.
- A DSL or cable connection to the internet.
- Any one of the following web browsers:
  - Internet Explorer version 6.0 or above
  - Firefox version 2.0 or above
  - Chrome version 2.0 or above
  - Safari version 2.0 or above

### Finding ParentConnection & logging in

#### Step 1

To access ParentConnection, please go to <http://www.asdk12.org> and click on **Zangle ParentConnect** in the navigation sidebar near the top left of the ASD Online homepage. Alternatively, you may go directly to ParentConnection by entering the following address in you Internet browser: <https://parentconnect.asdk12.org/> (notice the “s” after http).



The ParentConnection **Login window** will appear.

## Step 2

Enter your **PIN** and **Password** you received from your student's school.

Then, click **Lagon**



**\*\*\*IMPORTANT:** You **must allow pop-ups** for this site in your Internet web browser.

## Changing Your password

At First Login

**IMPORTANT!** - First-Time Visitors Will Be Forced To Change Your Password!

If this is your first time accessing ParentConnection, you will be forced to change your password from the temporary password provided by your student's school. The Change Password Window appears immediately upon login and you will be unable to move further without creating a new password.

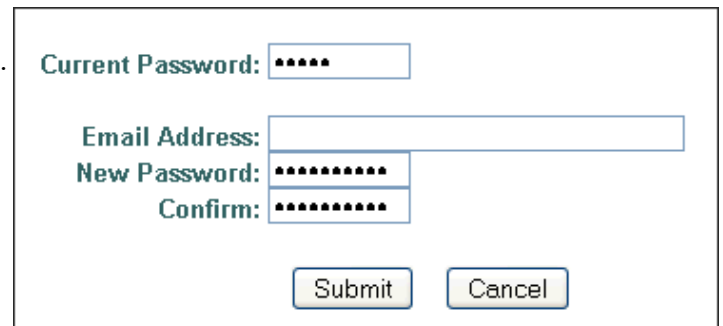
Enter your **Current Password** for authentication.

Type in your **New Password**.

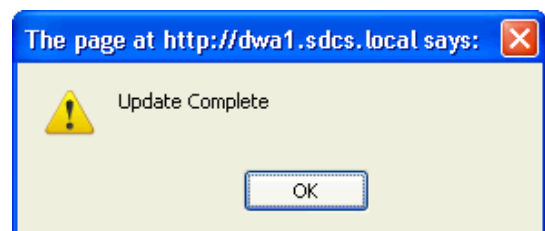
Type it again in the **Confirm** field.

**(Passwords are case sensitive)**

Click the **Submit** button.



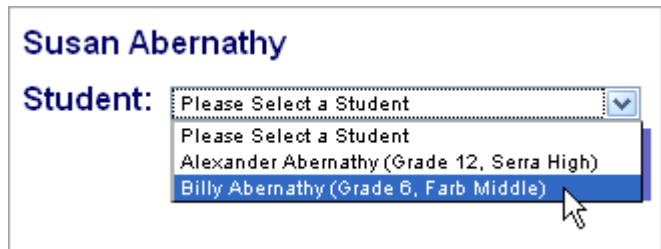
The **Update Complete** window pops up. Click **OK**.



## Using ParentConnection

### Accessing a Student

If you have Web Access to more than one student in the school district with ParentConnection, select which student's information to access via the Student drop-down menu at the left of the window. Zangle ParentConnection allows you to move back and forth between all students you have been given access to without needing to log out and back in.



### Accessing the Various Information Available

You access your student's information by clicking on the links located in the column on the left side of the window.

- [News](#)
- [Demographics](#)
- [Contacts](#)
- [Schedule](#)
- [Attendance](#)
- [Assignments](#)
- [Marks](#)
- [Standards](#)
- [Testing](#)

**News** - This page allows you to access school-wide and class-specific announcements.

**Demographics** – View demographic data on your child. You may want to review this page to be sure that the school has the most up-to-date information. Follow your school's procedures for the necessary updating of this information.

**Contacts** – This page lists your child's contact information, including parent or legal guardian, and Emergency Contacts. Here again, you may wish to review this information to be sure that the school has the most up-to-date information. Follow your school's procedures for the necessary updating of this information.

**Schedule** – This page lists your child's current class schedule.

**Attendance** – This page contains any pertinent information regarding your child's attendance. Contact your student's school for questions concerning this data.

**Assignments** – Here you can view your child's progress in their classes. This page defaults to showing the most current assignments. If you click on **Show All Assignments** in the upper-left corner, you can see all assignments. Items in **red** are missing assignments. Remember, you will only be able to view the gradebooks of teachers who are currently using the **Zangle GradeBook** program. **You will see a section for each course and each marking period that has occurred in the year.**

Class Assignments for 10/15/2009 - 10/29/2009								
Period: 2		Asia Studies			Teacher: [REDACTED]			
Current Grade For Quarter 2:		Not Available			<a href="#">Print Progress Report</a>			
No Assignments To Display								
Period: 2		Asia Studies			Teacher: [REDACTED]			
Current Grade For Quarter 1:		B			<a href="#">Print Progress Report</a>			
Detail	Date Due	Assignment	Pts Possible	Score	Scored As	Extra Credit	Not Graded	Comments
	10/15/2009	Religion Study Questions	10	9				
	10/15/2009	Religious Comparison	5	5				

**Marks** – This screen will display a list of all the report card marks that have been posted to the system for the selected student in the current school year. For assistance reading this information please reference page 34 of the Zangle Manual found under the [Help](#) link in the top right corner of the ParentConnect window.

**Standards** – Currently Anchorage School District is using this area to show the Kindergarten Report Card and the Work Habits section of the Elementary Report cards. You can find more information on this view on pages 35 & 36 in the Zangle Manual found under the [Help](#) link in the top right corner of the ParentConnect window.

**Testing** – This view will display your student’s score history in standardized testing. Contact your student’s school for questions concerning this data.