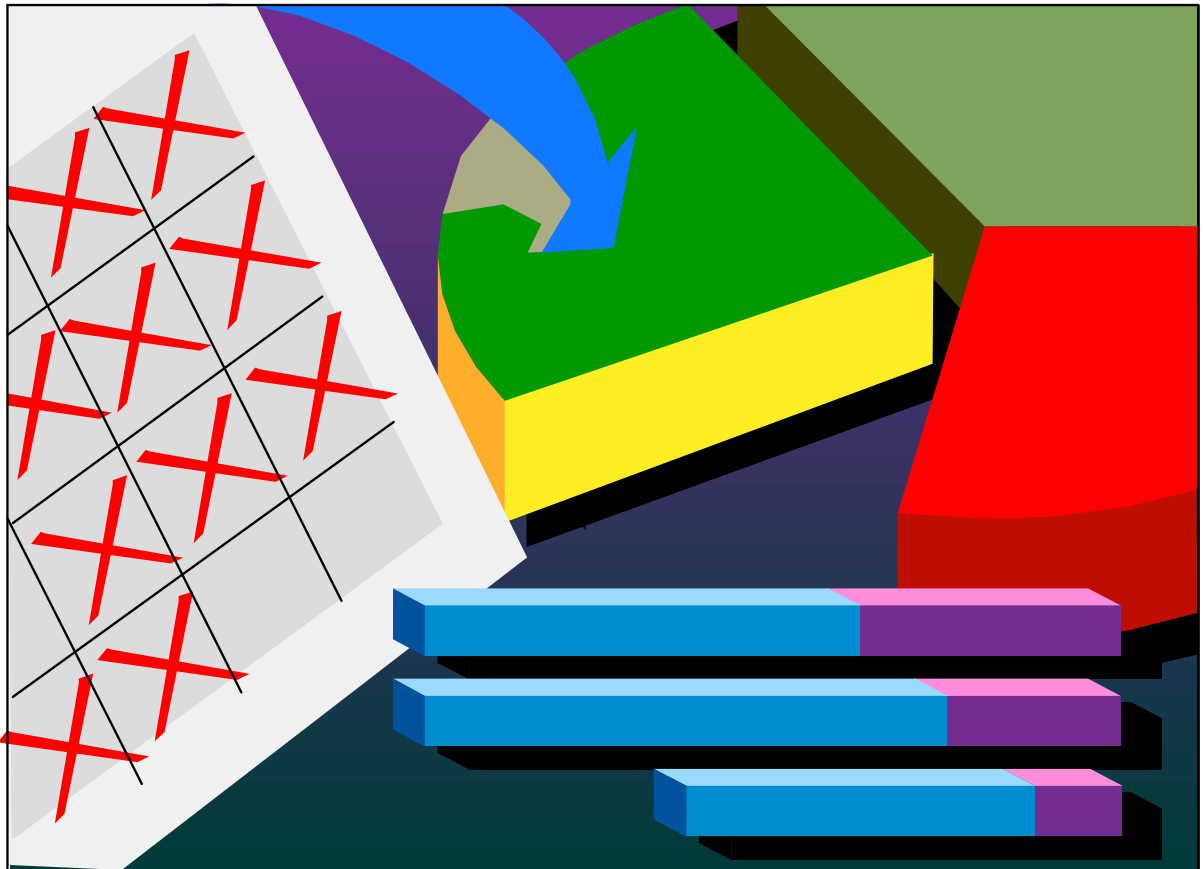


HIGH SCHOOL START TIME SURVEY ANALYSIS



ASSESSMENT & EVALUATION

HIGH SCHOOL START TIME SURVEY

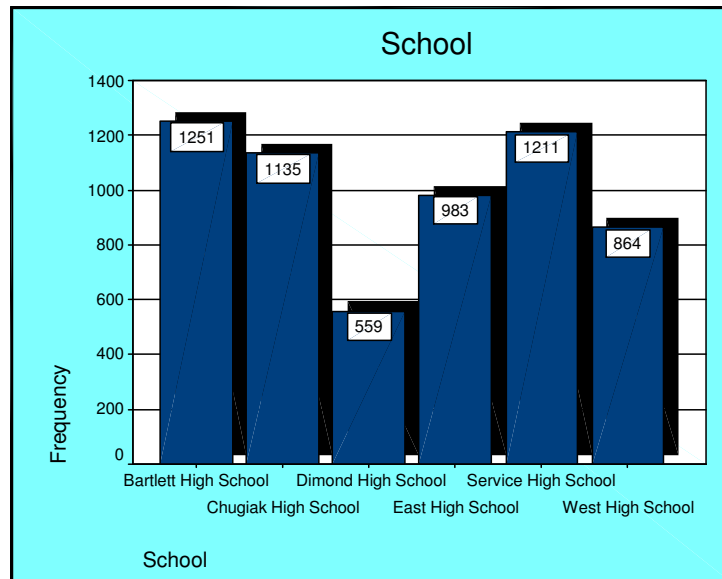
ANALYSIS

The High School Start Time survey is a paper based, scannable survey designed using Teleform Elite software. The survey analysis was completed using SPSS. There were 6,003 surveys scanned.

The survey questions were completed by students in grades 9 through 12 in 6 high schools.

School

		Frequency	Percent	Valid Percent	Cumulative Percent
Valid	Bartlett High School	1251	20.8	20.8	20.8
	Chugiak High School	1135	18.9	18.9	39.7
	Dimond High School	559	9.3	9.3	49.1
	East High School	983	16.4	16.4	65.4
	Service High School	1211	20.2	20.2	85.6
	West High School	864	14.4	14.4	100.0
	Total	6003	100.0	100.0	

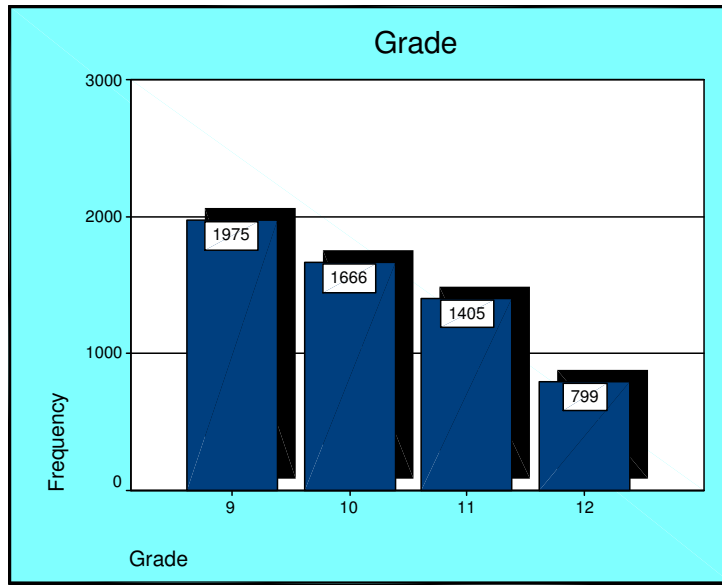


Assessment and Evaluation Department
Anchorage School District

Grade

Grade

		Frequency	Percent	Valid Percent	Cumulative Percent
Valid	9	1975	32.9	33.8	33.8
	10	1666	27.8	28.5	62.3
	11	1405	23.4	24.0	86.3
	12	799	13.3	13.7	100.0
	Total	5845	97.4	100.0	
Missing	System	158	2.6		
Total		6003	100.0		

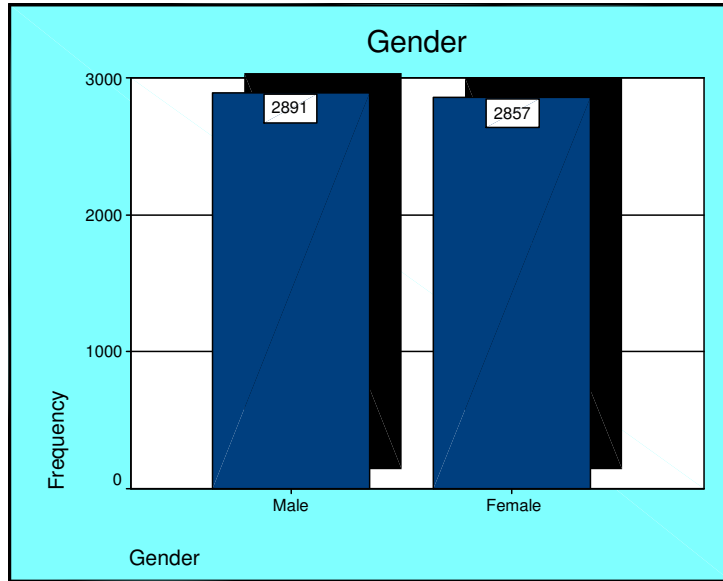


Assessment and Evaluation Department
Anchorage School District

Gender

Gender

		Frequency	Percent	Valid Percent	Cumulative Percent
Valid	Male	2891	48.2	50.3	50.3
	Female	2857	47.6	49.7	100.0
	Total	5748	95.8	100.0	
Missing	System	255	4.2		
Total		6003	100.0		

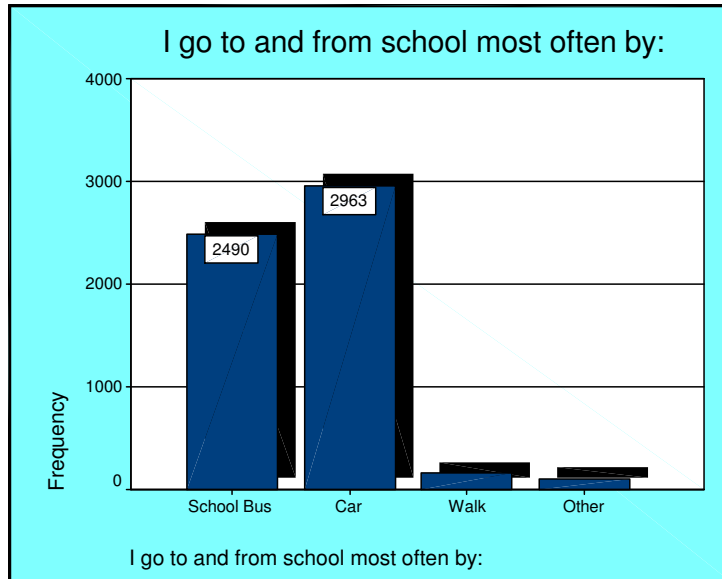


Assessment and Evaluation Department
Anchorage School District

I go to and from school most often by:

I go to and from school most often by:

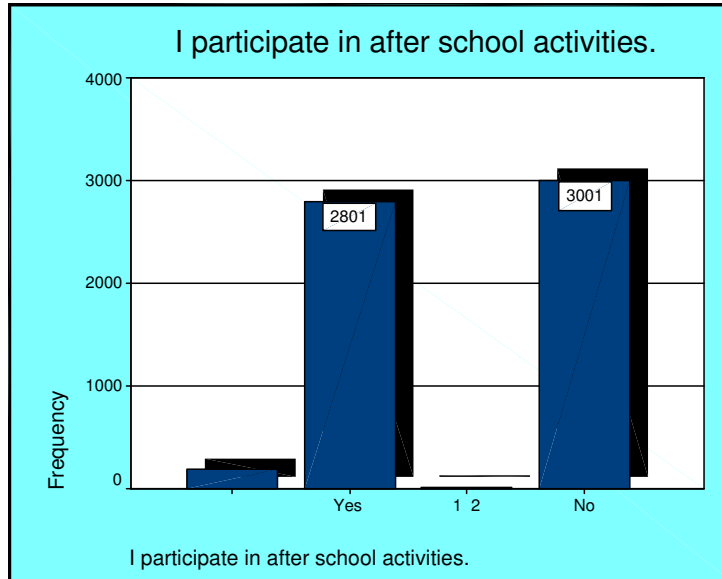
		Frequency	Percent	Valid Percent	Cumulative Percent
Valid	School Bus	2490	41.5	43.6	43.6
	Car	2963	49.4	51.9	95.4
	Walk	159	2.6	2.8	98.2
	Other	102	1.7	1.8	100.0
	Total	5714	95.2	100.0	
Missing	System	289	4.8		
Total		6003	100.0		



I participate in after school activities.

I participate in after school activities.

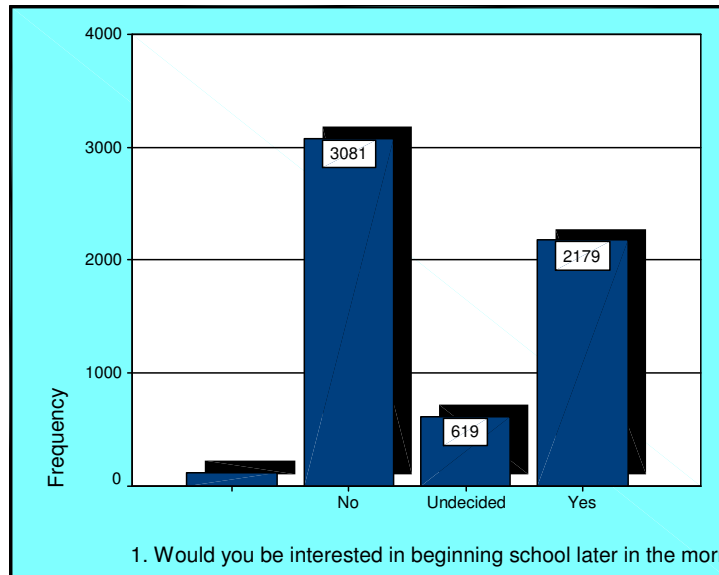
	Frequency	Percent	Valid Percent	Cumulative Percent
Valid	187	3.1	3.1	3.1
Yes	2801	46.7	46.7	49.8
1 2	14	.2	.2	50.0
No	3001	50.0	50.0	100.0
Total	6003	100.0	100.0	



1. Would you be interested in beginning school later in the morning if it meant staying later each day?

. Would you be interested in beginning school later in the morning if it meant staying later each day?

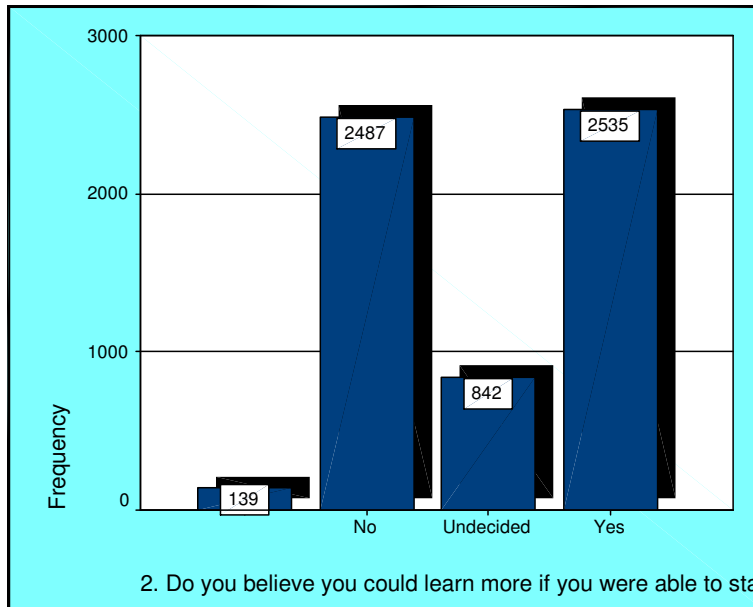
	Frequency	Percent	Valid Percent	Cumulative Percent
Valid	124	2.1	2.1	2.1
No	3081	51.3	51.3	53.4
Undecided	619	10.3	10.3	63.7
Yes	2179	36.3	36.3	100.0
Total	6003	100.0	100.0	



2. Do you believe you could learn more if you were able to start your school day later?

2. Do you believe you could learn more if you were able to start your school day later?

	Frequency	Percent	Valid Percent	Cumulative Percent
Valid	139	2.3	2.3	2.3
No	2487	41.4	41.4	43.7
Undecided	842	14.0	14.0	57.8
Yes	2535	42.2	42.2	100.0
Total	6003	100.0	100.0	



3. Do you believe that the current start time for school is negatively affecting your academic progress?

3. Do you believe that the current start time for school is negatively affecting your academic progress?

	Frequency	Percent	Valid Percent	Cumulative Percent
Valid				
No	139	2.3	2.3	2.3
Undecided	2827	47.1	47.1	49.4
Yes	935	15.6	15.6	65.0
Total	2102	35.0	35.0	100.0
	6003	100.0	100.0	

