

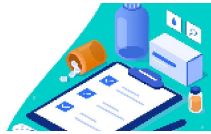
# Covid-19 Relief Navigators

Do you need **HELP** *applying* for:

**\*rental and utility assistance**   **\*food assistance**  
**\*child care assistance**   **\*healthcare**

Do you need **HELP** with:

**\*Anchorage School District**   **\*Covid-19 info**  
or other **Resources** for Anchorage families?



**Contact Us:**

Online Form: [muni.org/CPLN](https://muni.org/CPLN)

Email: [AnchoragePLNS@gmail.com](mailto:AnchoragePLNS@gmail.com)

Call or Text: **(907) 290-3639**



Call and Press 0 - or enter language Extension

Ext. 0 - **English/Main Line** (interpreting services available)  
Ext. 1 - **Amharic**   Ext. 2 - **Arabic**   Ext. 3 - **Dinka**   Ext. 4 - **Korean**  
Ext. 5 - **Samoan**   Ext. 6 - **Spanish**   Ext. 701 - **Somali / Swahili**  
Ext. 704 - **Russian**   Ext. 706 - **Tongan**   Ext. 710 - **Nuer**

The CPLN project builds on ALP's existing **Peer Leader Navigator program**; a group of trusted, multilingual, and multicultural community residents who help underserved Limited English Proficient communities access health information and resources.

**AnchoragePLNs.org**

You can visit the **Alaska Literacy Program** at 1345 Rudakof Circle, Suite 104, Anchorage, AK 99508 to speak to a CPLN in person during:

**CPLN office hours:**

- ★ Tuesdays, 11:30 a.m. – 1:00 p.m.
- ★ Wednesdays, 4:30 p.m. – 6:00 p.m.
- ★ Thursdays, 11:30 a.m. – 1:00 p.m.
- ★ Fridays, 11:30 a.m. – 1:00 p.m.

The assistance to apply for the resources available in our community are **FREE**.

