

IN PERSON LEARNING QUARTER 4 2020/2021

Expectations & Responsibilities



SCHOOL HOURS

Business hours 7:30-3:00
Student hours 7:45-1:00
Please call the front office to excuse students that arrive after 8:15.

- Health screening for all students upon arrival
- Students can use front or side door for entry and exit. Please choose the shortest line.

WHAT TO BRING

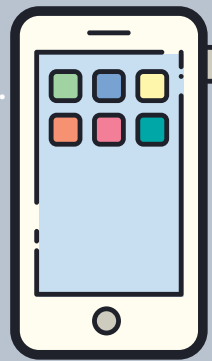
- A Chromebook and a charger
- Headphones/ear buds
- Pencils and a notebook
- 2-3 masks
- A refillable water bottle (optional)
- A snack (optional)
- A good attitude



CELL PHONE USE

The use of cell phones will not be allowed during instruction or without teacher permission. Please review the full Highland Cell Phone policy for more information.

Parents should notify the school if they need to communicate with their child.



WHAT TO NOT BRING

Classroom space is limited - please only bring the items you need for the school day. Lockers will not be available.

We have a brand new filtered water refill station. Keep your energy drinks and soda at home!

Please do not bring any hand held gaming devices to school.

Reminders

- We will have one directional travel within the building. Please follow the arrows posted around the building.
- There will be no passing period - students will proceed directly to their next class.
- Bathroom use will be limited to one student per classroom at a time during class time, and only two students in the bathroom at a time.
- Lunch will be eaten off-campus after 1:00.
- Wednesdays are Student Support Days - students should not report to school, but should join their teachers' Zoom sessions for extra help and support.

IF YOU HAVE ANY SYMPTOMS, OR CLOSE CONTACT WITH SOMEONE WHO HAS RECEIVED A POSITIVE COVID TEST, STAY HOME AND LOG INTO EMPOWER! PLEASE LET US KNOW SO WE CAN EXCUSE YOUR ABSENCE.

CULTURE OF RESPECT FOR EVERYONE - ESPECIALLY DURING A PANDEMIC

Our CORE principles must be modeled every day. Students MUST maintain social distancing, and keep their masks on at all times. It is critical that students do their part to keep everyone around them healthy and safe. Disregard for the health and safety of others will not be tolerated.

To ensure face-to-face learning is maintained through the end of the year, it is absolutely critical that we are working together as a team. Complying with staff requests and following the school safety plan are critical for the health and safety of every stakeholder.

educating for leadership, educating for life